

LOC/DME I-HPI <b>109.9</b> Chan <b>36</b>	APP CRS <b>238°</b>	Rwy Ldg <b>9953</b>	24L <b>9000</b>	24R <b>780</b>
		TDZE <b>786</b>	<b>780</b>	
		Apt Elev <b>799</b>	<b>799</b>	

# ILS or LOC RWY 24L

CLEVELAND-HOPKINS INTL (CLE)

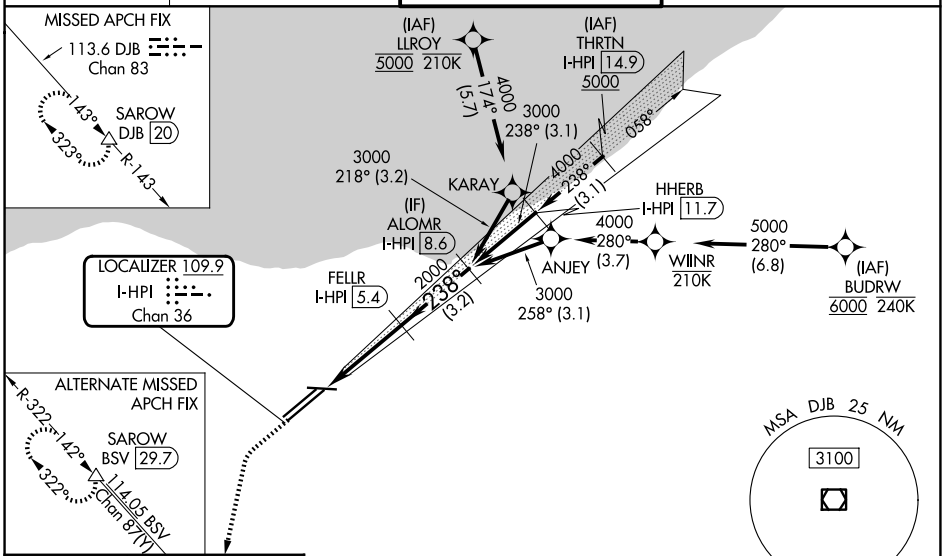
DME required. Aircraft not DME/DME/IRU or GPS equipped - RADAR required for procedure entry. RNAV 1. From LLROY and BUDRW: RNAV 1-DME/DME/IRU or GPS required for procedure entry.



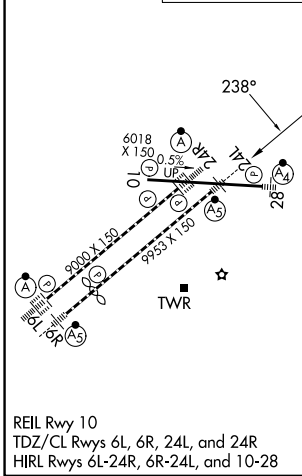
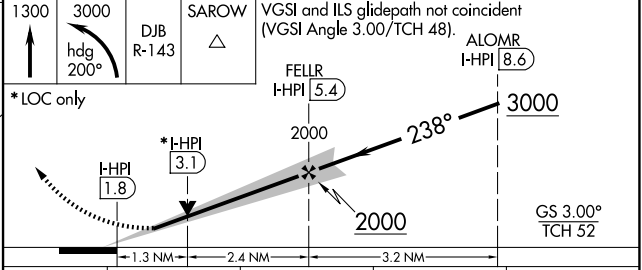
**MISSED APPROACH:**  
Climb to 1300 then climbing left turn to 3000 on heading 200° and DJB VOR/DME R-143 to SAROW/DJB 20 DME and hold.

**⚠** Circling Rwy 10 NA at night. Simultaneous approach authorized. Simultaneous operations require use of vertical guidance; maintain last assigned altitude until established on glide slope. Inop table does not apply to Sidestep 24R. For inop ALS, increase S-LOC 24L Cats C/D visibility to 1 3/8 SM.

D-ATIS <b>127.85</b>	CLEVELAND APP CON <b>126.55 346.325</b>	CLEVELAND TOWER <b>124.5 273.45</b>	GND CON <b>121.7 273.45</b>
-------------------------	--	--	--------------------------------



ELEV 799	<b>D</b>	TDZE 24L 786
		TDZE 24R 780



CLEVELAND, OHIO  
Amdt 24 20JUN19

41°25'N-81°51'W

# CLEVELAND-HOPKINS INTL (CLE)

## ILS or LOC RWY 24L

EC-2, 11 JUN 2026 to 09 JUL 2026

EC-2, 11 JUN 2026 to 09 JUL 2026