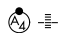


LOC/DME I-PXP 110.7 Chan 44	APP CRS 281°	Rwy Ldg TDZE 799 Apt Elev 799	6018
---	------------------------	---	-------------

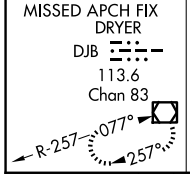
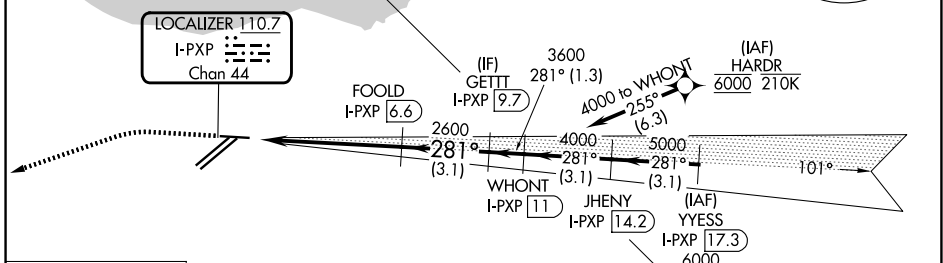
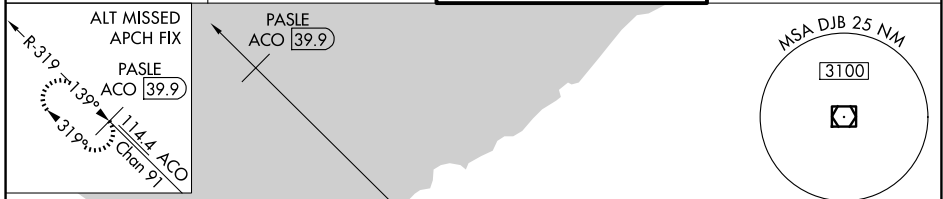
ILS or LOC RWY 28

CLEVELAND-HOPKINS INTL (CLE)

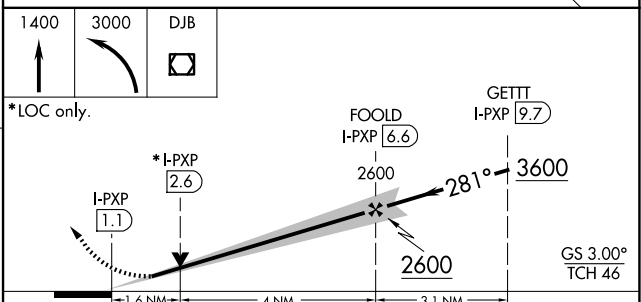
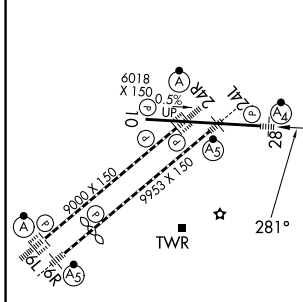
RNAV 1. From HARDR: RNAV 1-DME/DME/IRU or GPS required for procedure entry.
Aircraft not DME/DME/IRU or GPS equipped - RADAR required for procedure entry.
DME required.

MALSF  MISSED APPROACH: Climb to 1400 then climbing left turn to 3000 direct DJB VOR/DME and hold.

▼ Circling Rwy 10 NA at night. Inop table does not apply to S-ILS 28.	D-ATIS 127.85	CLEVELAND APP CON 126.55 346.325	CLEVELAND TOWER 124.5 273.45	GND CON 121.7 273.45
---	-------------------------	--	--	--------------------------------



ELEV 799	D	TDZE 799
----------	----------	----------



CATEGORY	A	B	C	D
S-ILS 28	999/40		200 (200-¾)	
S-LOC 28	1340/40	541 (600-¾)	1340-1¾	541 (600-1¾)
CIRCLING	1420-1	621 (700-1)	1420-1¾	1420-2
			621 (700-1¾)	621 (700-2)

EC-2, 11 JUN 2026 to 09 JUL 2026

EC-2, 11 JUN 2026 to 09 JUL 2026