

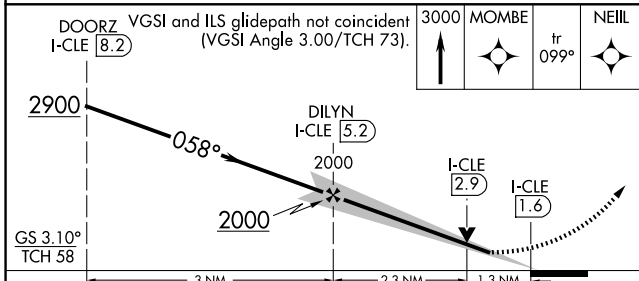
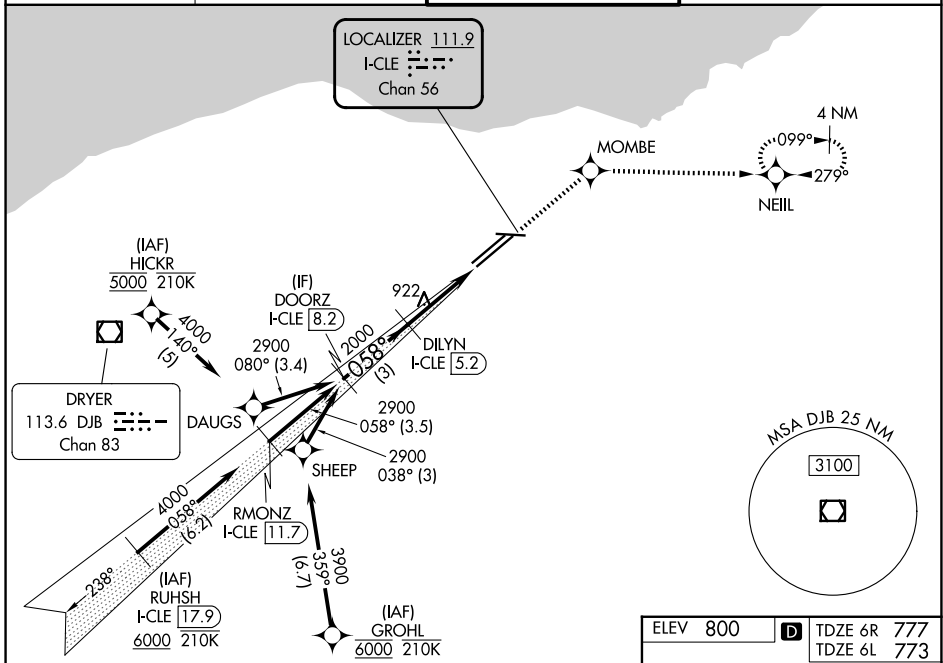
LOC/DME I-CLE 111.9 Chan 56	APP CRS 058°	Rwy Ldg TDZE Apt Elev	6R 8029 777 800	6L 9000 773 800
--	------------------------	-----------------------------	---	---

ILS or LOC RWY 6R

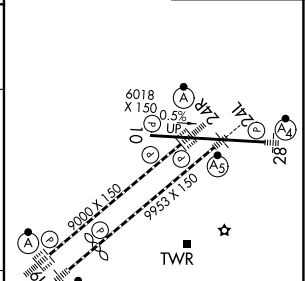
CLEVELAND-HOPKINS INTL (CLE)

RNP APCH - GPS.	Rwy 6R MALSR 	Rwy 6L ALS-F-2 	MISSED APPROACH: Climb to 3000 direct MOMBE and on track 099° to NEILL and hold.
<p>▼ Circling Rwy 10 NA at night. Simultaneous approach authorized. Simultaneous operations require use of vertical guidance; maintain last assigned altitude until established on glideslope. Inop table does not apply to Sidestep 6L. For inop ALS, increase S-LOC 6R Cats C/D visibility to 1½ SM.</p>			

D-ATIS 127.85	CLEVELAND APP CON 126.55 346.325	CLEVELAND TOWER 124.5 273.45	GND CON 121.7 273.45
-------------------------	--	--	--------------------------------



ELEV 800	D TDZE 6R 777
	TDZE 6L 773



CATEGORY	A	B	C	D
S-ILS 6R	977/18		200 (200-½)	
S-LOC 6R	1260/24	483 (500-½)	1260/50	483 (500-1)
SIDESTEP 6L	1260-1½ 487 (500-1½)		1260-2 487 (500-2)	
CIRCLING	1420-1	620 (700-1)	1420-1¾ 620 (700-1¾)	1420-2 620 (700-2)

REIL Rwy 10
TDZ/CL Rwy 6L, 6R, 24L and 24R
HIRL Rwy 6L-24R, 6R-24L and 10-28

EC-2, 11 JUN 2026 to 09 JUL 2026

EC-2, 11 JUN 2026 to 09 JUL 2026