

CLEVELAND, OHIO

AL-84 (FAA)

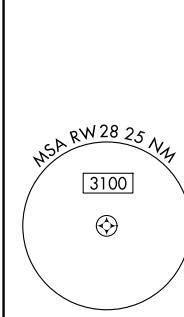
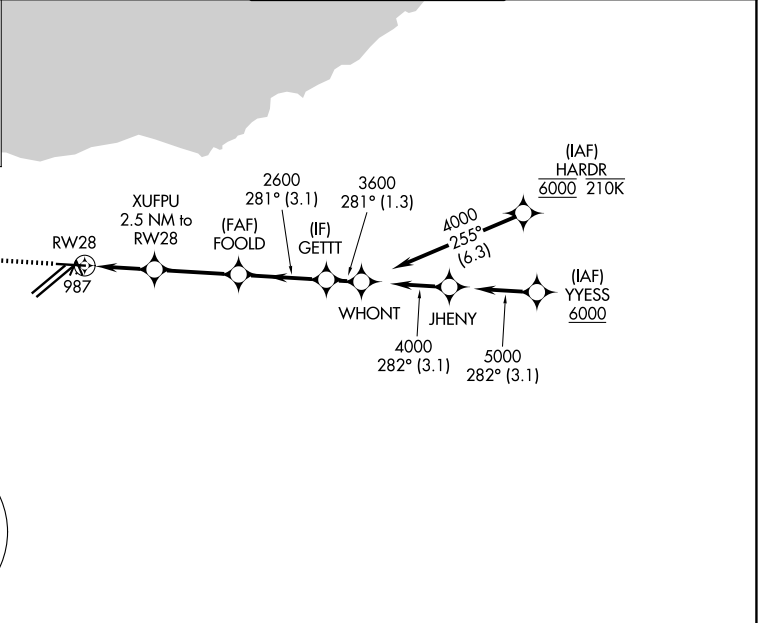
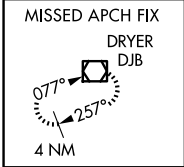
25275

WAAS CH <b>40109</b> <b>W28A</b>	APP CRS <b>281°</b>	Rwy Ldg <b>6018</b> TDZE <b>799</b> Apt Elev <b>799</b>
--	------------------------	---

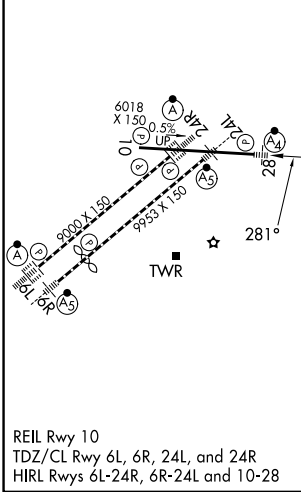
# RNAV (GPS) RWY 28

CLEVELAND-HOPKINS INTL (CLE)

RNP APCH. ▼ For uncompensated Baro-VNAV systems, LNAV/VNAV NA below -18°C (0°F) or above 54°C (130°F). Circling Rwy 10 NA at night. Inop table does not apply to LPV.		MALSF 	MISSED APPROACH: Climb to 1400 then climbing left turn to 3000 direct DJB VOR/DME and hold.
D-ATIS <b>127.85</b>	CLEVELAND APP CON <b>126.55 346.325</b>	CLEVELAND TOWER <b>124.5 273.45</b>	GND CON <b>121.7 273.45</b>



ELEV 799	<b>D</b>	TDZE 799
----------	----------	----------



1400	3000	DJB		
*LNAV only.				
RWY 28		XUFPU 2.5 NM to RWY 28	FOOLD 2600	GETTT 3600
1.3 NM		1.2 NM	3 NM	3.1 NM
CATEGORY	A	B	C	D
LPV DA		999/40	200 (200-¾)	
LNAV/VNAV DA		1168/40	369 (400-¾)	
LNAV MDA	1260/40	461 (500-¾)	1260/60	461 (500-1¼)
CIRCLING	1420-1	621 (700-1)	1420-1¾ 621 (700-1¾)	1420-2 621 (700-2)

CLEVELAND, OHIO  
Amdt 3 24MAY18

41°25'N-81°51'W

# CLEVELAND-HOPKINS INTL (CLE) RNAV (GPS) RWY 28

EC-2, 11 JUN 2026 to 09 JUL 2026

EC-2, 11 JUN 2026 to 09 JUL 2026