

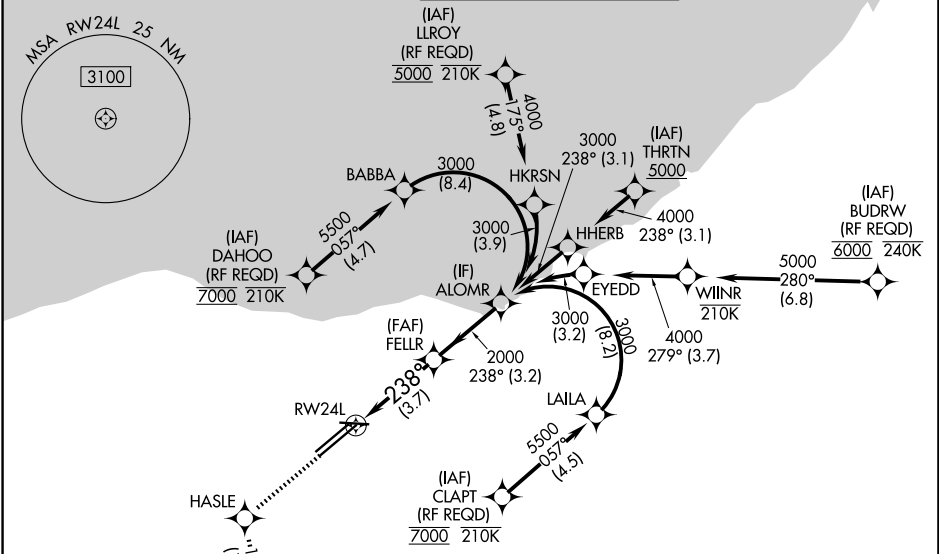
RNAV (RNP) Z RWY 24L

CLEVELAND-HOPKINS INTL (CLE)

APP CRS 238°	Rwy Ldg TDZE Apt Elev	9953 786 799
------------------------	-----------------------------	---

RNP AR APCH.	MALSR 	MISSED APPROACH: Climb to 3000 direct HASLE and on track 177° to SAROW and hold.
<p>▼ For uncompensated Baro-VNAV systems, procedure NA below -18°C (0°F) or above 54°C (130°F). For inop ALS, increase RNP 0.19 all Cats visibility to RVR 5500.</p>		

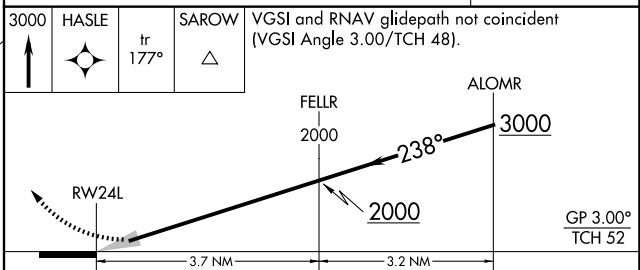
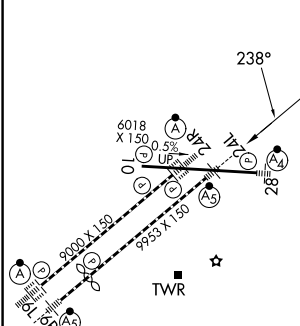
D-ATIS 127.85	CLEVELAND APP CON 126.55 346.325	CLEVELAND TOWER 124.5 273.45	GND CON 121.7 273.45
-------------------------	--	--	--------------------------------



EC-2, 11 JUN 2026 to 09 JUL 2026

EC-2, 11 JUN 2026 to 09 JUL 2026

ELEV 799	D	TDZE 786
----------	----------	----------



CATEGORY	A	B	C	D
RNP 0.19 DA		1140/30	354 (400- $\frac{5}{8}$)	
RNP 0.30 DA		1243/45	457 (500- $\frac{7}{8}$)	

AUTHORIZATION REQUIRED