

RNAV (RNP) Z RWY 24R

CLEVELAND-HOPKINS INTL (CLE)

APP CRS	Rwy Ldg	9000
238°	TDZE	780
	Apt Elev	799

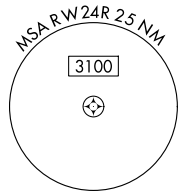
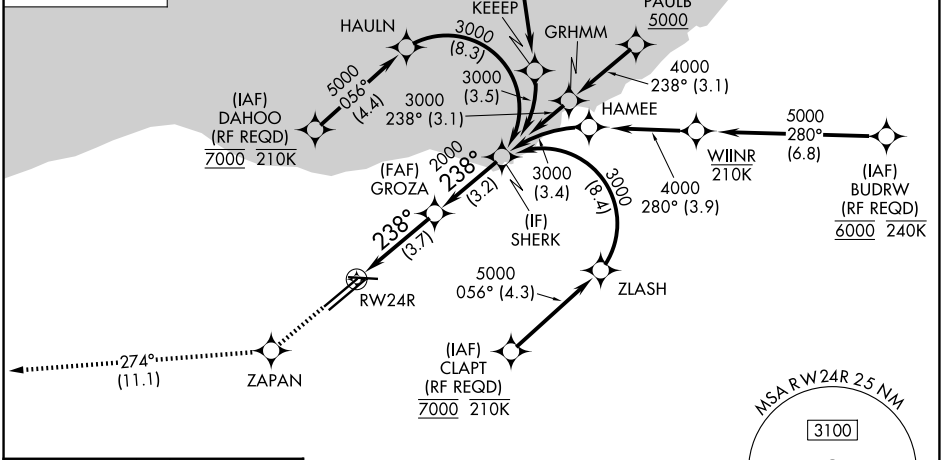
RNP AR APCH.

▼ For uncompensated Baro-VNAV systems, procedure NA below -18°C (0°F) or above 54°C (130°F). For inop ALS, increase RNP 0.13 all Cats visibility to RVR 4500.

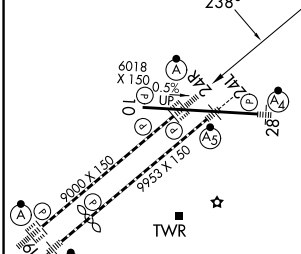
ALS F-2

MISSED APPROACH: Climb to 3000 direct ZAPAN and on track 274° to DJB VOR/DME and hold.

D-ATIS 127.85	CLEVELAND APP CON 126.55 346.325	CLEVELAND TOWER 124.5 273.45	GND CON 121.7 273.45
-------------------------	--------------------------------------------	----------------------------------------	--------------------------------



ELEV 799	D	TDZE 780
----------	----------	----------



3000 ZAPAN tr 274° DJB

VGSI and RNAV glidepath not coincident (VGSI Angle 3.00/TCH 65).

SHERK

RWY 24R, GROZA 2000, SHERK 3000

RNP 238°

GP 3.00° TCH 55

3.7 NM, 3.2 NM

CATEGORY	A	B	C	D
RNP 0.13 DA		1064/24	284 (300-½)	
RNP 0.30 DA		1176/35	396 (400-¾)	

AUTHORIZATION REQUIRED

EC-2, 11 JUN 2026 to 09 JUL 2026

EC-2, 11 JUN 2026 to 09 JUL 2026