

RNAV (RNP) Z RWY 6L

CLEVELAND-HOPKINS INTL (CLE)

APP CRS 058°	Rwy Ldg 9000
	TDZE 773
	Apt Elev 799

RNP AR APCH.

▼ For uncompensated Baro-VNAV systems, procedure NA below -18°C (0°F) or above 54°C (130°F). For inop ALS, increase RNP 0.17 all Cats visibility to RVR 5500 and RNP 0.30 all Cats visibility to RVR 6000.

ALSf-2

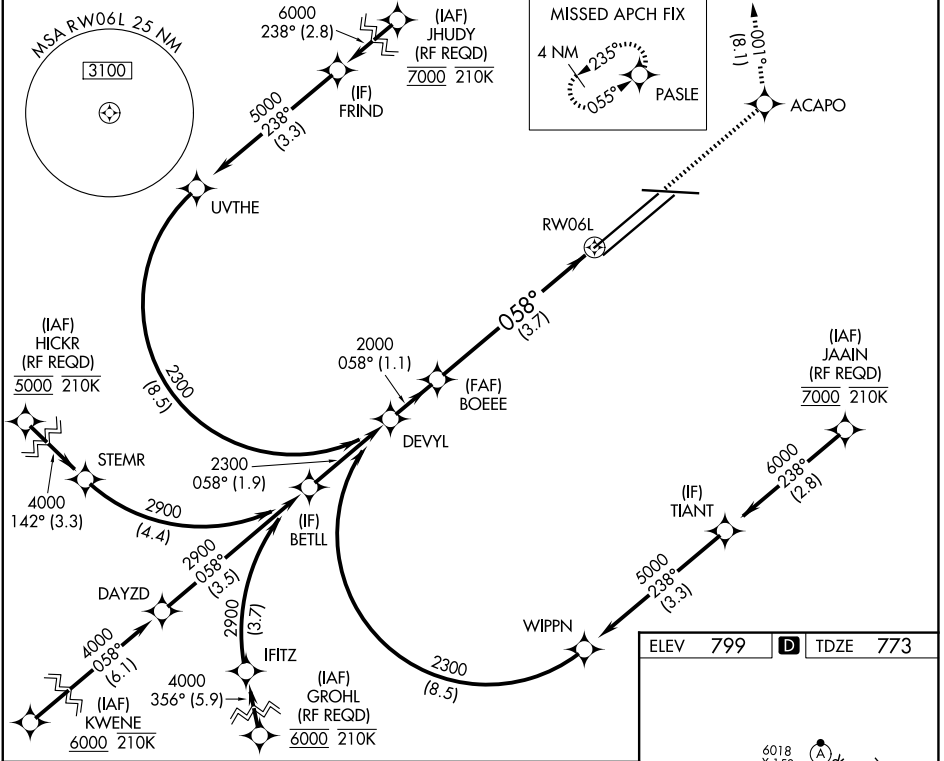
Ⓜ MISSED APPROACH: Climb to 3000 direct ACAPO and on track 001° to PASLE and hold.

D-ATIS
127.85

CLEVELAND APP CON
126.55 346.325

CLEVELAND TOWER
124.5 273.45

GND CON
121.7 273.45

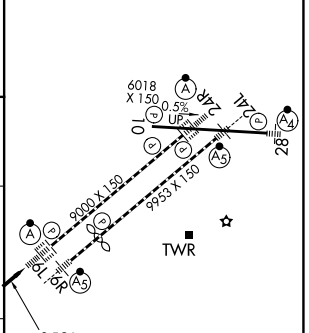
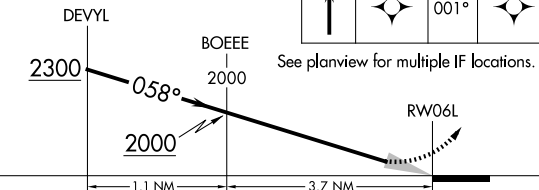


EC-2, 11 JUN 2026 to 09 JUL 2026

EC-2, 11 JUN 2026 to 09 JUL 2026

ELEV 799	D TDZE 773
----------	-------------------

VGSI and RNAV glidepath not coincident (VGSI Angle 3.00/TCH 69).



CATEGORY	A	B	C	D
RNP 0.17 DA		1123/30	350 (400-5%)	
RNP 0.30 DA		1176/40	403 (400-3/4)	

AUTHORIZATION REQUIRED

REIL Rwy 10
TDZ/CL Rwy 6L, 6R, 24L, and 24R
HIRL Rwy 6L-24R, 6R-24L and 10-28