

COLUMBUS, MISSISSIPPI

HI-ILS or LOC Z RWY 13C

LOC I-CBM 109.3	APCH CRS 135°	Rwy Igd TDZE Arprt Elev	13C 12,004 196 218	13L 8001 194 218
---------------------------	-------------------------	-------------------------------	--	--

[USAF]

COLUMBUS AFB (KCBM)

▲ *When ALS inop, increase RVR to 40, vis to ¼ mile.
**When ALS inop, increase vis to 1½ miles.

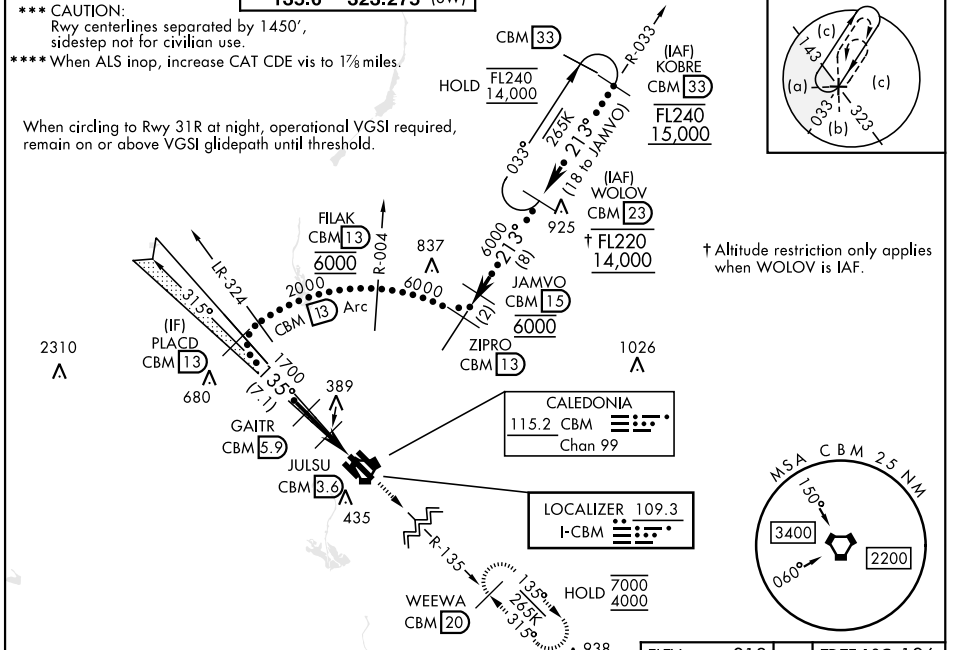


MISSED APPROACH: Climb heading 135° to intercept the CBM VORTAC R-135 outbound to WEEWA (CBM R-135/20 DME) and hold. Maintain 4000

ATIS ★ 115.2 273.5	APP CON ★ 126.075 239.25 (N) 134.55 350.3 (SE) 135.6 323.275 (SW)	TOWER ★ 126.65 379.925	GND CON ★ 121.9 275.8
------------------------------	---	----------------------------------	---------------------------------

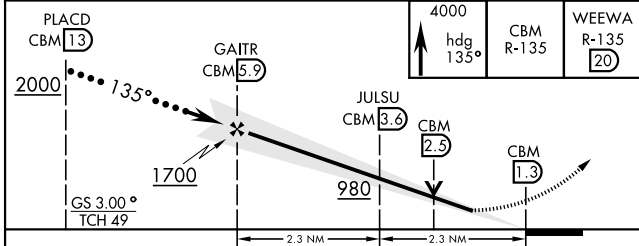
*** CAUTION:
Rwy centerlines separated by 1450',
sidestep not for civilian use.
**** When ALS inop, increase CAT CDE vis to 1½ miles.

When circling to Rwy 31R at night, operational VGSI required,
remain on or above VGSI glidepath until threshold.



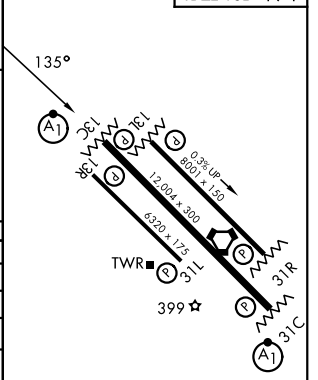
† Altitude restriction only applies when WOLOV is IAF.

EMERG SAFE ALT 100 NM 3700 FROM CBM



ELEV 218	TDZE 13C 196	TDZE 13L 194
----------	--------------	--------------

CATEGORY	C	D	E
S-ILS 13C *	396/24	200	(200-½)
S-LOC 13C **	640/45	444	(500-7/8)
SIDESTEP *** RWY 13L	640-1½	446	(500-13/8)
CIRCLING	740-1½ 522 (600-1½)	880-2 662 (700-2)	1240-3 1022 (1100-3)
LOCAL ALTIMETER, WITHOUT LAST STEPDOWN FIX			
S-LOC 13C ****	840-1½	644	(700-1½)
SIDESTEP *** RWY 13L	840-17/8	646	(700-17/8)
CIRCLING	840-17/8 622 (700-17/8)	880-2 662 (700-2)	1240-3 1022 (1100-3)



HIRL Rwy 13C-31C, 13L-31R	FAF to MAP 4.6 NM					
MIRL Rwy 13R-31L	Knots	120	140	160	180	200
	Min:Sec	2:18	1:58	1:44	1:32	1:23

COLUMBUS, MISSISSIPPI

33° 39'N-88° 27'W

COLUMBUS AFB (KCBM)

Amdt 3 19MAR26

HI-ILS or LOC Z RWY 13C

SC-4, 11 JUN 2026 to 09 JUL 2026

SC-4, 11 JUN 2026 to 09 JUL 2026