

COLUMBUS, MISSISSIPPI

# HI-ILS or LOC Z RWY 31C

LOC I-TBB  
**108.7**

31C	31R
Rwy Ldg	<b>12,004</b> <b>8001</b>
TDZE	<b>213</b> <b>218</b>
Arprt Elev	<b>218</b> <b>218</b>

[USAF]

COLUMBUS AFB (KCBM)

- \* When ALS inop, increase RVR to 40, vis to 3/4 mile.
- \*\* When ALS inop, increase vis to 1 1/4 mile.
- † When ALS inop, increase vis to 1 3/8 mile.



MISSED APPROACH: Climb heading 315° to intercept the VOR/TAC CBM R-315 outbound to KREEK (CBM R-315/20) and hold. Maintain 4000.

ATIS ★  
**115.2 273.5**

APP CON ★  
**126.075 239.25** (N)  
**134.55 350.3** (SE)  
**135.6 323.275** (SW)

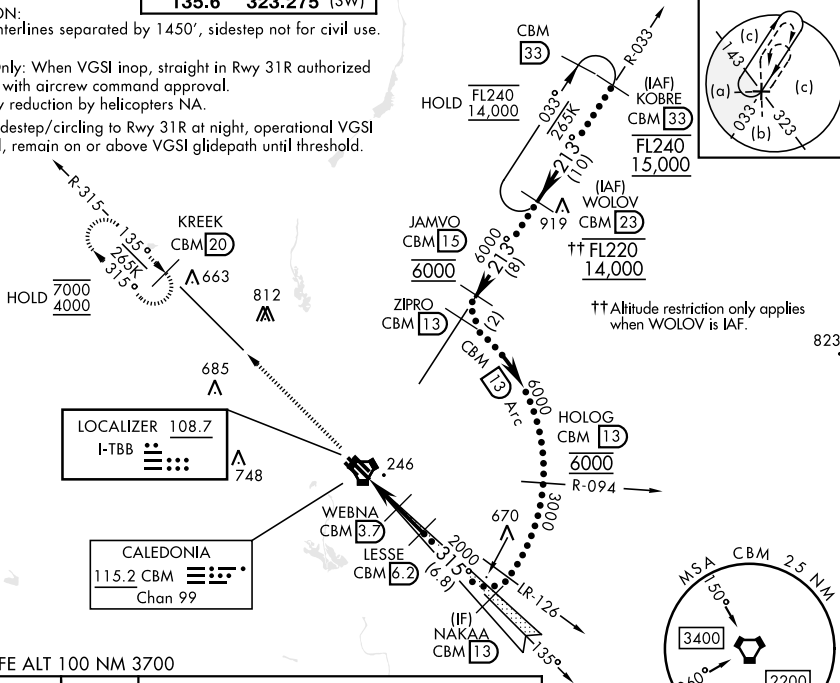
TOWER ★  
**126.65 379.925**

GND CON ★  
**121.9 275.8**

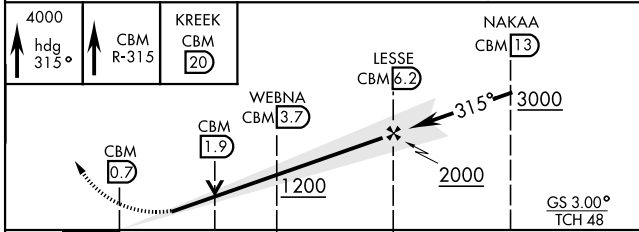
\*\*\* CAUTION:  
Rwy centerlines separated by 1450', sidestep not for civil use.

USAF Only: When VGSI inop, straight in Rwy 31R authorized at night with aircrew command approval. Visibility reduction by helicopters NA.

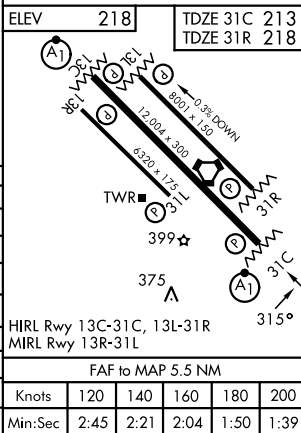
When sidestep/circling to Rwy 31R at night, operational VGSI required, remain on or above VGSI glidepath until threshold.



EMERG SAFE ALT 100 NM 3700



CATEGORY	C	D	E
S-ILS 31C*	413/24	200	(200-1/2)
S-LOC 31C**	640/40	427	(500-3/4)
SIDESTEP RWY 31R***	640-1 1/4	422	(500-1/4)
CIRCLING	740-1 1/2 522 (600-1 1/2)	880-2 662 (700-2)	1240-3 1022 (1100-3)
LOCAL ALTIMETER, WITHOUT LAST STEPDOWN FIX			
S-LOC 31C †	720/55	507	(600-1)
SIDESTEP*** RWY 31R	760-1 1/8	542	(600-1/8)
CIRCLING	760-1 1/8 542 (600-1/8)	880-2 662 (700-2)	1240-3 1022 (1100-3)



COLUMBUS, MISSISSIPPI  
Amdt 3 19MAR26

33°39'N-88°27'W

COLUMBUS AFB (KCBM)

# HI-ILS or LOC Z RWY 31C

SC-4, 11 JUN 2026 to 09 JUL 2026

SC-4, 11 JUN 2026 to 09 JUL 2026