

COLUMBUS, MISSISSIPPI

ILS or LOC Y RWY 13C

LOC I-CBM	APCH CRS	13C	13L
109.3	135°	Rwy ldg 12,004	8001
		TDZE 196	194
		Arprt Elev 218	218

[USAF]

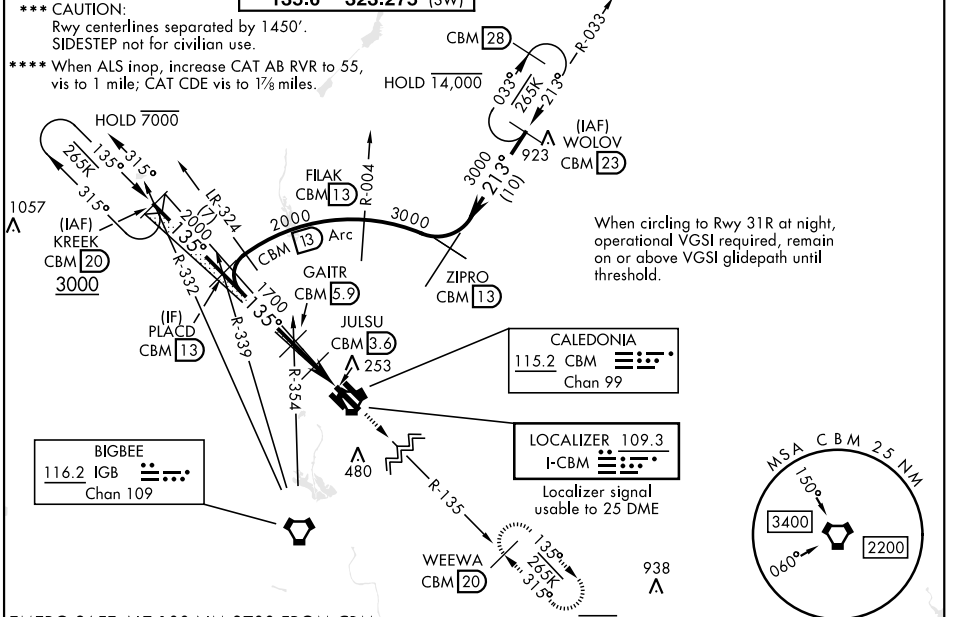
COLUMBUS AFB (KCBM)

▼ * When ALS inop, increase RVR to 40, vis to ¼ mile.
 ** When ALS inop, increase CAT AB RVR to 55, vis to 1 mile, CAT CDE vis to 1½ miles.



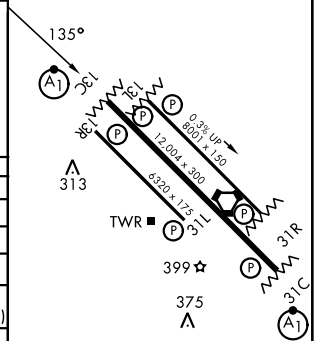
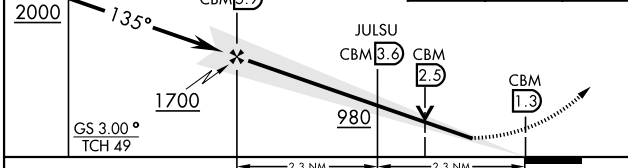
MISSED APPROACH: Climb heading 135° to intercept the CBM VORTAC R-135 outbound to WEEWA [CBM R-135/20] and hold. Maintain 4000

ATIS ★ 115.2 273.5	APP CON ★ 126.075 239.25 (N) 134.55 350.3 (SE) 135.6 323.275 (SW)	TOWER ★ 126.65 379.925	GND CON ★ 121.9 275.8
------------------------------	---	----------------------------------	---------------------------------



EMERG SAFE ALT 100 NM 3700 FROM CBM

PLACD IGB R-339 CBM 13	GAITR IGB R-354 CBM 5.9	4000	hdg 135°	WEWEA R-135 CBM 20	ELEV 218	TDZE 13C 196	TDZE 13L 194
------------------------	-------------------------	------	----------	--------------------	----------	--------------	--------------



CATEGORY	A	B	C	D	E
S-ILS 13C **		396/24	200	(200-½)	
S-LOC 13C **	640/24	444 (500-½)	640/45	444 (500-¾)	
SIDESTEP RWY 13L ***	640/55	446 (500-1)	640/1½	446 (500-1½)	
CIRCLING	700-1 482 (500-1)	720-1 502 (600-1)	740-1½ 522 (600-½)	880-2 662 (700-2)	1240-3 1022 (1100-3)
LOCAL ALTIMETER, WITHOUT LAST STEPDOWN FIX					
S-LOC 13C ****	840/24	644 (700-½)	840-1½	644 (700-1¾)	
SIDESTEP RWY 13L ****	840/55	646 (700-1)	840-1½	646 (700-1¾)	
CIRCLING	840-1	622 (700-1)	840-1½ 622 (700-¾)	880-2 662 (700-2)	1240-3 1022 (1100-3)

HIRL Rwy 13C-31C, 13L-31R	MIRL Rwy 13R-31L
FAF to MAP 4.6 NM	
Knots	60 90 120 150 180
Min:Sec	4:36 3:04 2:18 1:50 1:32

COLUMBUS, MISSISSIPPI

33°39'N-88°27'W

COLUMBUS AFB (KCBM)

Amdt 2 19MAY22

ILS or LOC Y RWY 13C

SC-4, 11 JUN 2026 to 09 JUL 2026

SC-4, 11 JUN 2026 to 09 JUL 2026