

COLUMBUS, MISSISSIPPI

RNAV (GPS) RWY 13C


WAAS CH 53183 W13A	APCH CRS 135°	Rwy ldg 12,004	TDZE 196
		Arprt Elev 218	

(USAF)

COLUMBUS AFB (KCBM)

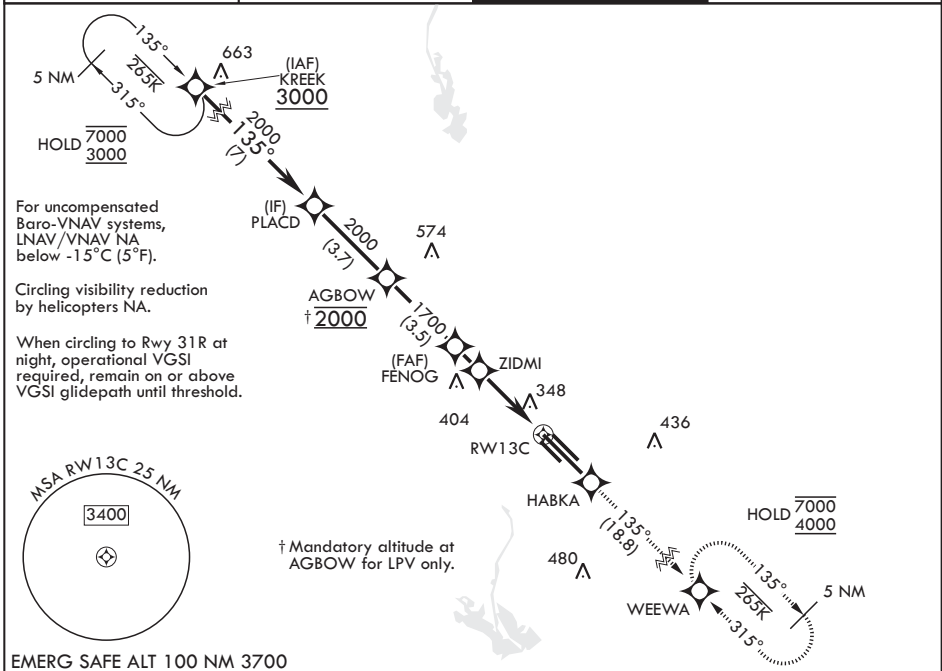
RNP APCH-GPS

▼ * When ALS inop increase RVR to 40, vis to 3/4 mile.
 ** When ALS inop, increase vis to 1 3/8 miles.
 *** When ALS inop, increase CAT AB RVR to 55, vis to 1 mile, CAT CDE vis to 1 3/8 miles.

ALSF-1 

MISSED APPROACH: Climb to 4000 direct HABKA, direct track to WEEWA and hold as published.

ATIS* 115.2 273.5	APP CON* 126.075 239.25 N 134.55 350.3 SE 135.6 323.275 SW	TOWER* 126.65 379.925	GND CON* 121.9 275.8
----------------------	---	--------------------------	-------------------------



EMERG SAFE ALT 100 NM 3700

KREEK	PLACD	AGBOW	FENOG	ZIDMI	RWY13C	HABKA	WEEWA	ELEV 218	TDZE 196
3000	2000	†2000	1700	1260	1.4 NM to RWY13C				
GP 3.00° TCH 49									
CATEGORY	A	B	C	D	E				
LPV DA*	396/24		200	(200-1/2)					
LNAV/VNAV DA**	666/50		470	(500-1)					
LNAV MDA***	680/24	484 (500-1/2)	680/50	484	(500-1)				
CIRCLING	700-1 482 (500-1)	720-1 502 (600-1)	740-1 1/2 522 (600-1 1/2)	880-2 662 (700-2)	1240-3 1022 (1100-3)	HIRL Rwy 13C-31C and 13L-31R MIRL Rwy 13R-31L			

COLUMBUS, MISSISSIPPI
Amdt 4 07SEP23

33°39'N - 88°27'W

COLUMBUS AFB (KCBM)

RNAV (GPS) RWY 13C

SC-4, 11 JUN 2026 to 09 JUL 2026

SC-4, 11 JUN 2026 to 09 JUL 2026