

COLUMBUS, MISSISSIPPI

RNAV (GPS) RWY 31C

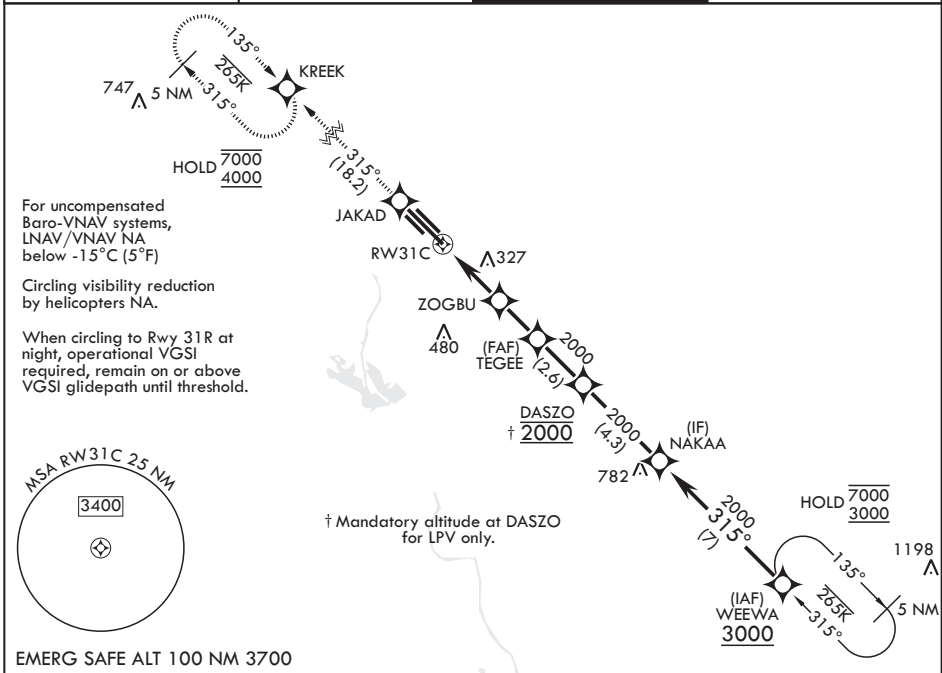
WAAS CH 89580 W31A	APCH CRS 315°	Rwy ldg TDZE Arpt Elev	12,004 213 218
---------------------------------	-------------------------	------------------------------	---

(USAF)

COLUMBUS AFB (KCBM)

RNP APCH-GPS	ALSIF-1	MISSED APPROACH: Climb to 4000 direct JAKAD, direct KREEK and hold.
<p>▼ * When ALS inop increase RVR to 40, vis to 3/4 mile. ** When ALS inop, increase vis to 1 3/8 miles. *** When ALS inop, increase CAT AB RVR to 55, vis to 1 mile; CAT CDE vis to 1 3/4 miles.</p>		

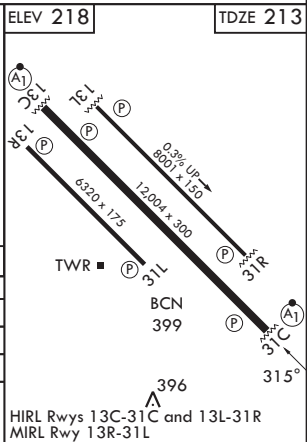
ATIS★ 115.2 273.5	APP CON★ 126.075 239.25 N 134.55 350.3 SE 135.6 323.275 SW	TOWER★ 126.65 379.925	GND CON★ 121.9 275.8
-----------------------------	--	---------------------------------	--------------------------------



SC-4, 11 JUN 2026 to 09 JUL 2026

SC-4, 11 JUN 2026 to 09 JUL 2026

<p>4000 ↑</p> <p>JAKAD</p> <p>tr 315°</p> <p>KREEK</p>	ELEV 218					TDZE 213	
<p>TEGEE</p> <p>DASZO</p> <p>NAKAA</p> <p>ZOGBU</p> <p>RWY 31C</p> <p>1.8 NM to RWY 31C</p> <p>1280</p> <p>2000</p> <p>2000</p> <p>3.2 NM</p> <p>2.2 NM</p> <p>GP 3.00°</p> <p>TCH 48</p>							
CATEGORY	A	B	C	D	E		
LPV DA*	413/24		200	(200-1/2)			
LNAV/VNAV DA**	671/45		458	(500-3/4)			
LNAV MDA***	840/24 627 (700-1/2)		840-1 3/8	627 (700-1%)			
CIRCLING	840-1 622 (700-1)		840-1 3/4	880-2	1240-3		
			622 (700-1 3/4)	662 (700-2)	1022 (1100-3)		



COLUMBUS, MISSISSIPPI

33°39'N - 88°27'W

COLUMBUS AFB (KCBM)

Amdt 4 07SEP23

RNAV (GPS) RWY 31C