

COLUMBUS, MISSISSIPPI

RNAV (GPS) RWY 31R

APCH CRS 315°	Rwy Idg 218	8001
	TDZE	218
	Arpt Elev	218

(USAF)

COLUMBUS AFB (KCBM)

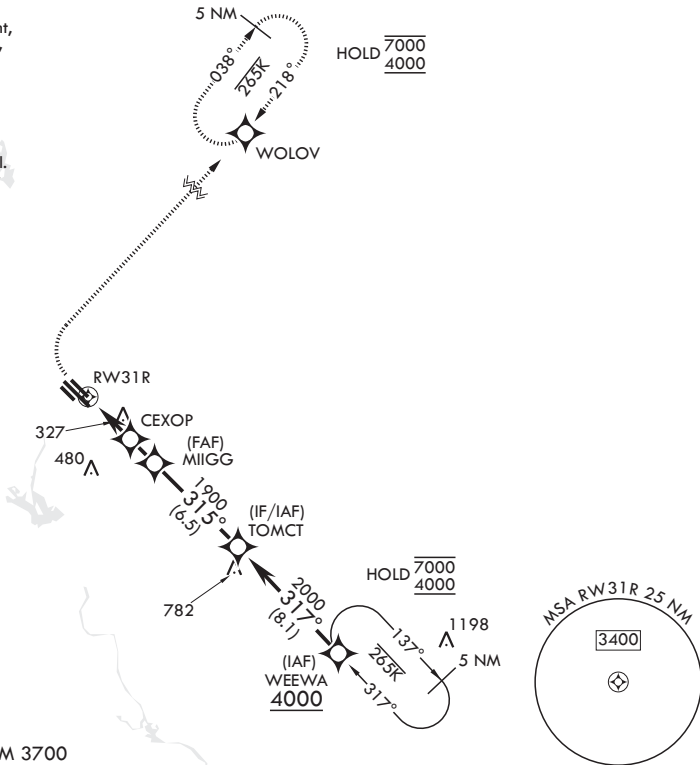
RNP APCH-GPS	MISSED APPROACH: Climb to 800 then climbing right turn to 4000 direct WOLOV and hold.
--------------	---

<p>ATIS*</p> <p>115.2 273.5</p>	<p>APP CON*</p> <p>126.075 239.25 N</p> <p>134.55 350.3 SE</p> <p>135.6 323.275 SW</p>	<p>TOWER*</p> <p>126.65 379.925</p>	<p>GND CON*</p> <p>121.9 275.8</p>
---------------------------------	--	-------------------------------------	------------------------------------

Straight-in Rwy 31R at night, operational VGSI required, remain on or above VGSI glidepath until threshold.

USAF Only: When VGSI inop, straight-in Rwy 31R authorized at night with aircrew command approval. LNAV visibility reduction by helicopters NA.

747



EMERG SAFE ALT 100 NM 3700

<p>800</p> <p>4000</p> <p>WOLOV</p>	<p>WEEWA</p> <p>ELEV 218</p> <p>TDZE 218</p>				
CATEGORY	A	B	C	D	E
LNAV MDA	660/55	442 (500-1)	660-1%	442 (500-1%)	
CIRCLING	700-1 482 (500-1)	720-1 502 (600-1)	740-1½ 522 (600-1½)	880-2 662 (700-2)	1240-3 1022 (1100-3)
<p>HIRL Rwy 13C-31C and 13L-31R</p> <p>MIRL Rwy 13R-31L</p>					

COLUMBUS, MISSISSIPPI

33°39'N - 88°27'W

COLUMBUS AFB (KCBM)

Amdt 2 21APR22

RNAV (GPS) RWY 31R

SC-4, 11 JUN 2026 to 09 JUL 2026

SC-4, 11 JUN 2026 to 09 JUL 2026