

# RNAV (GPS) E

APCH CRS <b>090°</b>	Rwy Idg TDZE Arpt Elev	N/A N/A <b>218</b>
-------------------------	------------------------------	--------------------------

(USAF)

COLUMBUS AFB (KCBM)

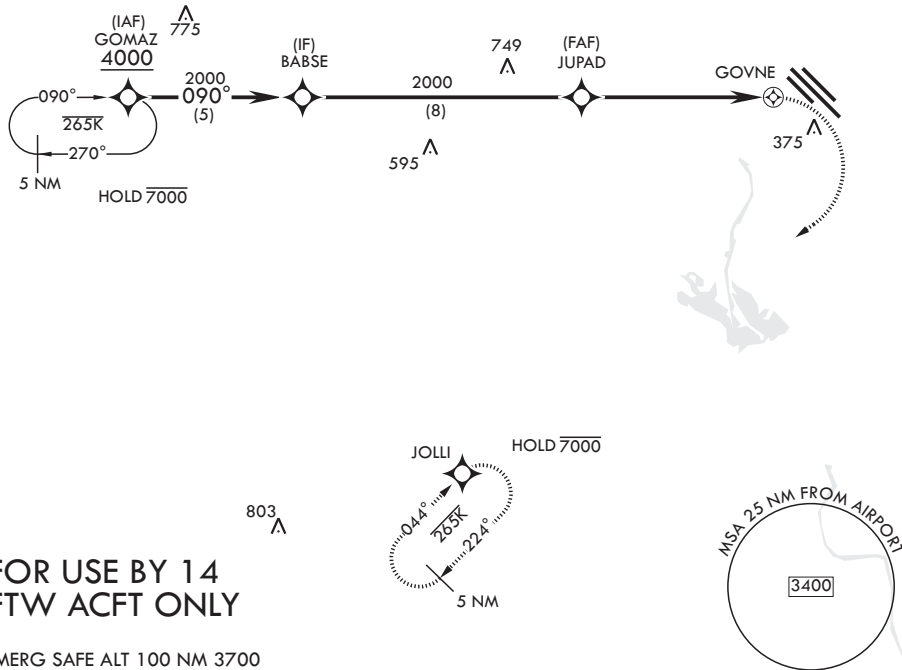
RNP APCH-GPS MISSED APPROACH: Climbing right turn to 3000 direct JOLLI and hold or as directed by ATC.

ATIS* <b>115.2 273.5</b>	APP CON* <b>126.075 239.25 N</b> <b>134.55 350.3 SE</b> <b>135.6 323.275 SW</b>	TOWER* <b>126.65 379.925</b>	GND CON* <b>121.9 275.8</b>
-----------------------------	--	---------------------------------	--------------------------------

Circling visibility reduction by helicopters NA.

$\Delta$  775

When circling to Rwy 31R at night, operational VGSI required, remain on or above VGSI glidepath until threshold.



**FOR USE BY 14 FTW ACFT ONLY**

EMERG SAFE ALT 100 NM 3700

		ELEV 218			
CATEGORY	A	B	C	D	
CIRCLING	760-1 542 (600-1)	760-1½ 542 (600-1½)	NA	HIRL Rwys 13C-31C and 13L-31R MRL Rwy 13R-31L	

# RNAV (GPS) E

SC-4, 11 JUN 2026 to 09 JUL 2026

SC-4, 11 JUN 2026 to 09 JUL 2026