

COLUMBUS, MISSISSIPPI

# TACAN RWY 31R

VORTAC CBM <b>115.2</b> Chan <b>99</b>	APCH CRS <b>302°</b>	Rwy Idg TDZE <b>218</b> Arprt Elev <b>218</b>	<b>8001</b>
--	-------------------------	---	-------------

[USAF]

COLUMBUS AFB (KCBM)

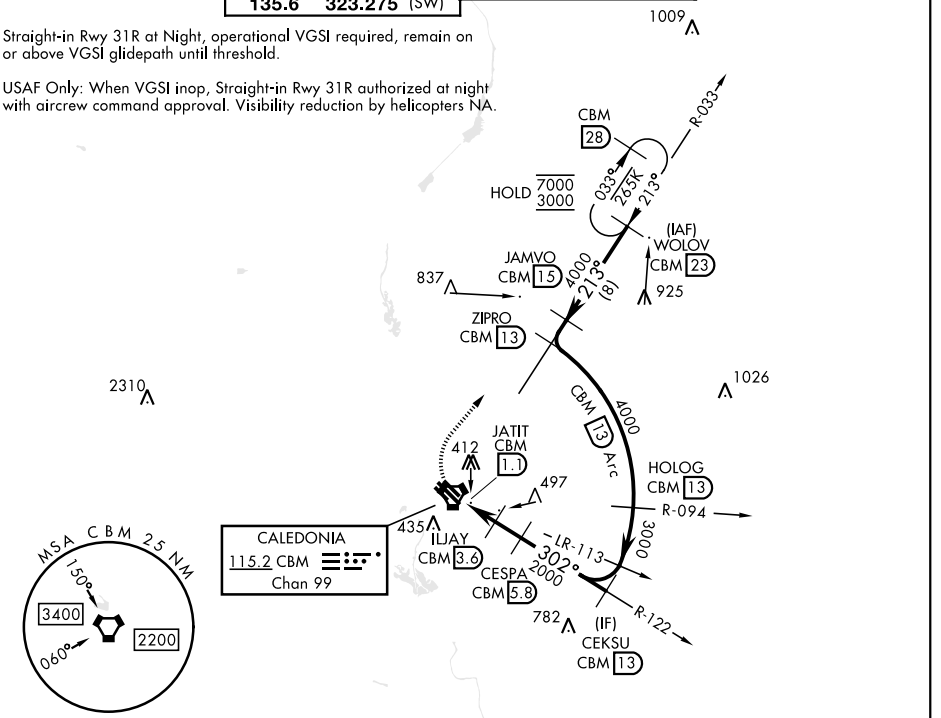
**Missed approach requires use of RNAV or ATC RADAR monitoring.**

**MISSED APPROACH:** Climbing right turn to WOLOV and hold as published. Maintain 3000.

ATIS ★ <b>115.2 273.5</b>	APP CON ★ <b>126.075 239.25</b> (N) <b>134.55 350.3</b> (SE) <b>135.6 323.275</b> (SW)	TOWER ★ <b>126.65 379.925</b>	GND CON ★ <b>121.9 275.8</b>
------------------------------	---	----------------------------------	---------------------------------

Straight-in Rwy 31R at Night, operational VGSI required, remain on or above VGSI glidepath until threshold.

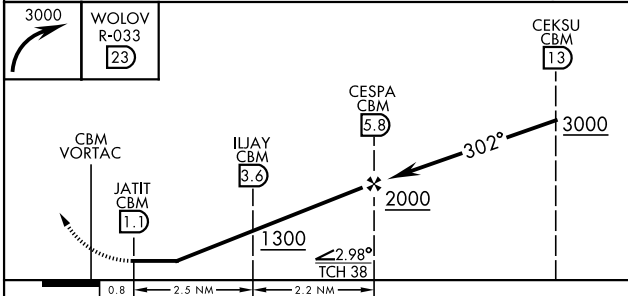
USAF Only: When VGSI inop, Straight-in Rwy 31R authorized at night with aircrew command approval. Visibility reduction by helicopters NA.



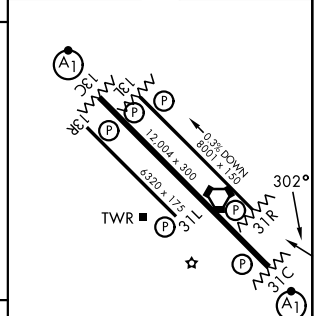
SC-4, 11 JUN 2026 to 09 JUL 2026

SC-4, 11 JUN 2026 to 09 JUL 2026

EMERG SAFE ALT 100 NM 3700



ELEV	218	TDZE	218
------	-----	------	-----



CATEGORY	A	B	C	D	E
S-31R	760/55	542 (600-1)	760-1½	542 (600-1½)	
CIRCLING	760-1	542 (600-1)	760-1½	880-2	1240-3

MIRL Rwy 13R-31L  
HIRL Rwy 13C-31C, 13L-31R

COLUMBUS, MISSISSIPPI

33°39'N-88°27'W

COLUMBUS AFB (KCBM)

Amdt 2 14MAY26

# TACAN RWY 31R