

COLUMBUS, MISSISSIPPI

VOR/DME A

VORTAC CBM 115.2 Chan 99	APCH CRS 090°	Rwy Idg TDZE Arprt Elev N/A N/A 218
--	-------------------------	---

[USAF]

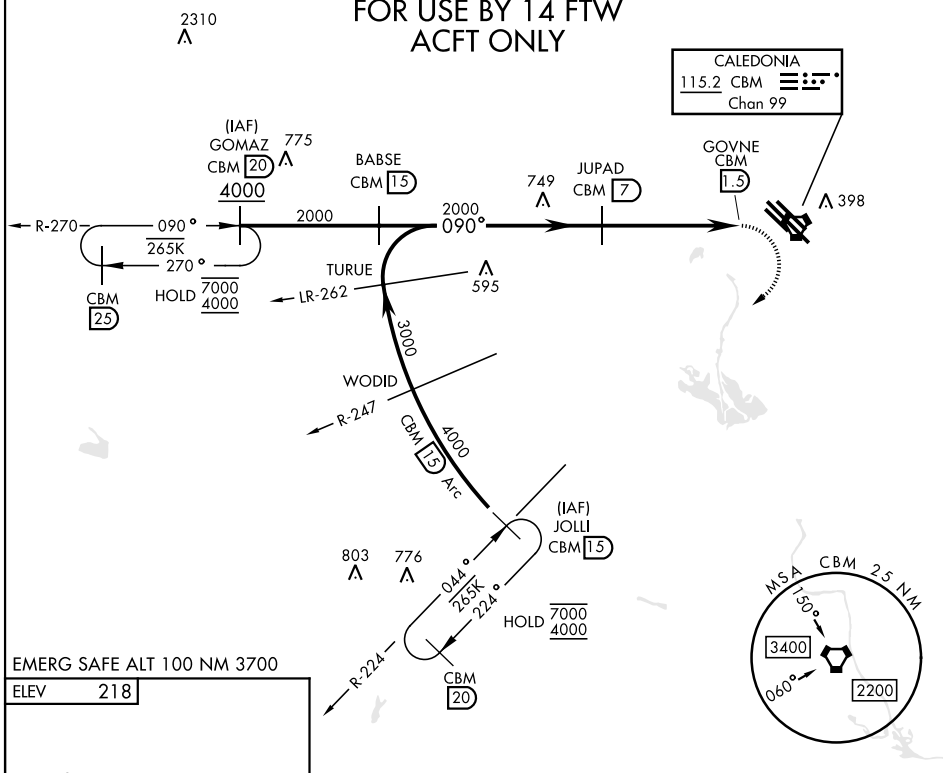
COLUMBUS AFB (KCBM)

▼ When circling to Rwy 31R at night, operational VGSI required, remain on or above VGSI glidepath until threshold.

MISSED APPROACH: Climbing right turn to intercept the CBM R-224 outbound to JOLLI (CBM R-224/15) and hold. Maintain 3000.

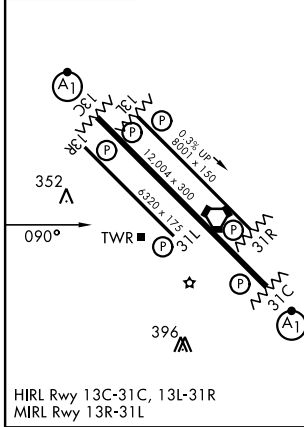
ATIS ★ 115.2 273.5	APP CON ★ 126.075 239.25 (N) 134.55 350.3 (SE) 135.6 323.275 (SW)	TOWER ★ 126.65 379.925	GND CON ★ 121.9 275.8
------------------------------	---	----------------------------------	---------------------------------

FOR USE BY 14 FTW ACFT ONLY

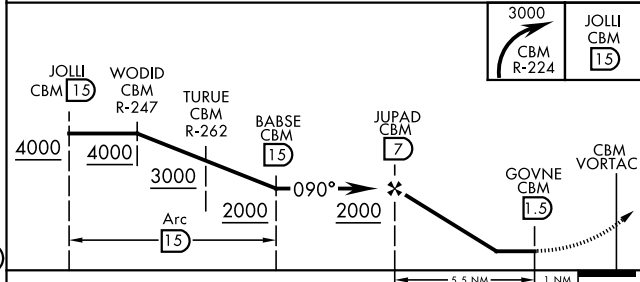


EMERG SAFE ALT 100 NM 3700

ELEV	218
------	-----



HIRL Rwy 13C-31C, 13L-31R
MIRL Rwy 13R-31L



CATEGORY	A	B	C
CIRCLING	760-1	542 (600-1)	760-1½ 542 (600-1½)

COLUMBUS, MISSISSIPPI

33° 39' N-88° 27' W

COLUMBUS AFB (KCBM)

Amdt 6 21APR22

VOR/DME A

SC-4, 11 JUN 2026 to 09 JUL 2026

SC-4, 11 JUN 2026 to 09 JUL 2026