

VORTAC CBM <b>115.2</b> Chan <b>99</b>	APCH CRS <b>060°</b>	Rwy Idg TDZE N/A Arprt Elev N/A <b>218</b>
--	-------------------------	--

[USAF]

COLUMBUS AFB (KCBM)

RADAR required

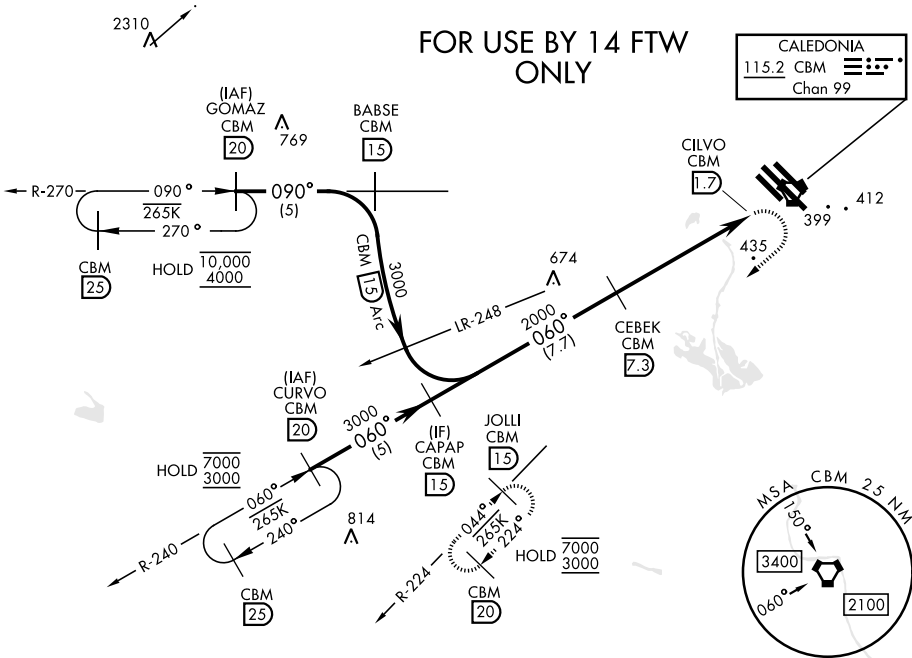
▼ When circling to Rwy 31R at night, operational VGSI required, remain on or above VGSI glidepath until threshold.  
Rwy 31R helicopter visibility reduction below 1 mile not authorized.

MISSED APPROACH: Climbing right turn to 3000 direct JOLLI (CBM R-224/15 DME) and hold.

ATIS ★ <b>115.2 273.5</b>	APP CON ★ <b>126.075 239.25 (N)</b> <b>134.55 350.3 (SE)</b> <b>135.6 323.275 (SW)</b>	TOWER ★ <b>126.65 379.925</b>	GND CON ★ <b>121.9 275.8</b>
------------------------------	---	----------------------------------	---------------------------------

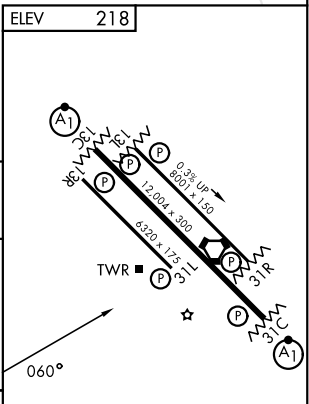
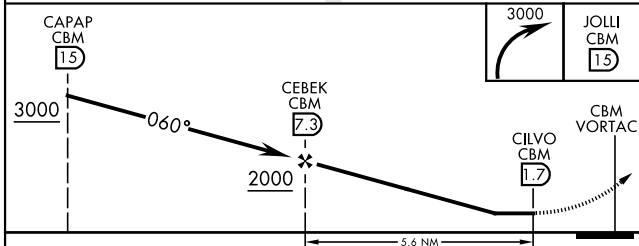
FOR USE BY 14 FTW ONLY

CALEDONIA  
115.2 CBM  
Chan 99



ELEV 218

EMERG SAFE ALT 100 NM 3700



CATEGORY	A	B	C
CIRCLING	800-1½	582	(600-1½)

HIRL Rwy 13C-31C, 13L-31R  
MRL Rwy 13R-31L

SC-4, 11 JUN 2026 to 09 JUL 2026

SC-4, 11 JUN 2026 to 09 JUL 2026