

HI-TACAN X RWY 13R

TACAN NGP Chan 87	APCH CRS 147°	Rwy Idg TDZE Arpt Elev	8001 13 18
-----------------------------	-------------------------	------------------------------	---------------------------------------

[USN]

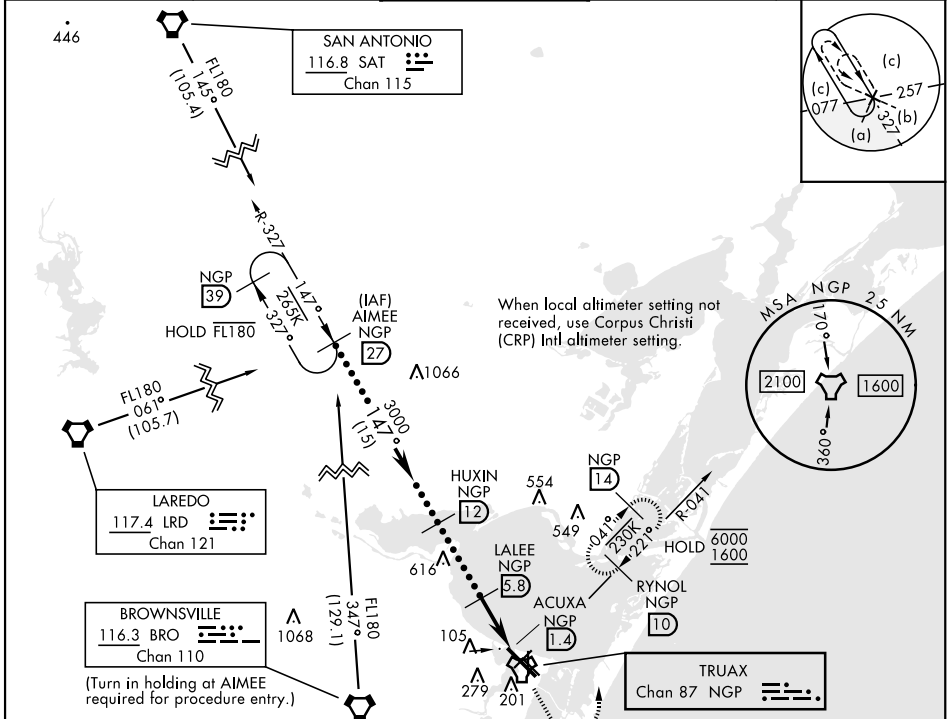
CORPUS CHRISTI NAS (TRUAX FLD) (KNGP)

V *When ALS inop, increase vis to 1½ miles.

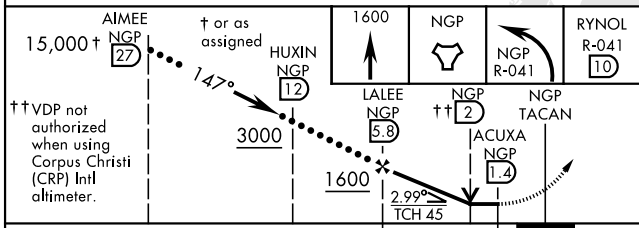
SALSF 

MISSED APPROACH: Climb to 1600 direct NGP TACAN and turn left to intercept R-041 to RYNOL and hold.

ATIS★ 127.9 290.9	APP CON 120.9 259.3	NAVY CORPUS TOWER★ 134.85 340.2	GND CON 118.7 257.85	ASR/PAR
-----------------------------	-------------------------------	---	--------------------------------	---------



EMERG SAFE ALT 100 NM 11,100



ELEV	18	TDZE	13
------	----	------	----

CATEGORY	C	D	E
S-13R*	400-7/8	387	(400-7/8)
CIRCLING	520-1½ 502 (600-1½)	580-2	562 (600-2)
CORPUS CHRISTI (CRP) INTL ALTIMETER SETTING			
S-13R*	420-1	407	(500-1)
CIRCLING	540-1½ 522 (600-1½)	620-2 602 (700-2)	620-2¼ 602 (700-2¼)

The diagram shows the layout of TRUAX Field (NAS Corpus Christi). It includes Runway 13R (31131R), Runway 13L (31131L), Runway 4-22 (3600 x 300), Runway 18-36 (2005 x 300), and Runway 18-36 (2005 x 186). Taxiways include TWX, TWY 36, TWY 31, TWY 18, TWY 13, TWY 4, TWY 2, TWY 1, TWY 3, TWY 4, TWY 5, TWY 6, TWY 7, TWY 8, TWY 9, TWY 10, TWY 11, TWY 12, TWY 13, TWY 14, TWY 15, TWY 16, TWY 17, TWY 18, TWY 19, TWY 20, TWY 21, TWY 22, TWY 23, TWY 24, TWY 25, TWY 26, TWY 27, TWY 28, TWY 29, TWY 30, TWY 31, TWY 32, TWY 33, TWY 34, TWY 35, TWY 36, TWY 37, TWY 38, TWY 39, TWY 40, TWY 41, TWY 42, TWY 43, TWY 44, TWY 45, TWY 46, TWY 47, TWY 48, TWY 49, TWY 50, TWY 51, TWY 52, TWY 53, TWY 54, TWY 55, TWY 56, TWY 57, TWY 58, TWY 59, TWY 60, TWY 61, TWY 62, TWY 63, TWY 64, TWY 65, TWY 66, TWY 67, TWY 68, TWY 69, TWY 70, TWY 71, TWY 72, TWY 73, TWY 74, TWY 75, TWY 76, TWY 77, TWY 78, TWY 79, TWY 80, TWY 81, TWY 82, TWY 83, TWY 84, TWY 85, TWY 86, TWY 87, TWY 88, TWY 89, TWY 90, TWY 91, TWY 92, TWY 93, TWY 94, TWY 95, TWY 96, TWY 97, TWY 98, TWY 99, TWY 100. The diagram also shows the location of the Tower (TWR) and various navigation aids.

HI-TACAN X RWY 13R

SC-3, 11 JUN 2026 to 09 JUL 2026

SC-3, 11 JUN 2026 to 09 JUL 2026