

CORPUS CHRISTI, TEXAS

ILS Y or RNAV (GPS) RWY 13R

LOC/DME I-NGP 111.3 Chan 50	APCH CRS 132°	Rwy Idg TDZE Arpt Elev 8001 13 18
---	-------------------------	---

[USN]

CORPUS CHRISTI NAS (TRUAX FLD) (KNGP)

RNP APCH for LNAV.
RNAV1 - GPS for ILS.

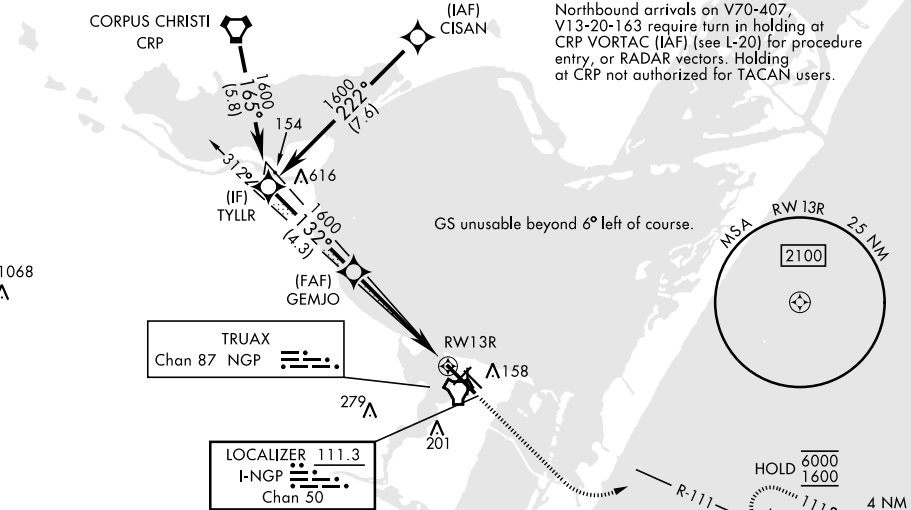
▼ *When ALS inop, increase CAT AB vis to 1 mile; CAT CD vis to 1½ miles.



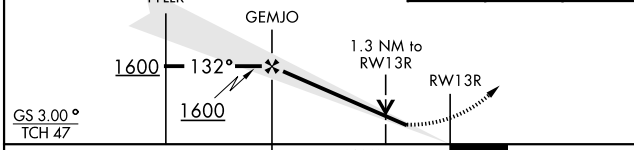
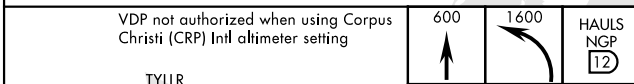
MISSED APPROACH: Climb to 600, then climbing left turn to 1600 direct HAULS and hold.

ATIS ★ 127.9 290.9	APP CON 120.9 259.3	NAVY CORPUS TOWER ★ 134.85 340.2	GND CON 118.7 257.85	ASR/PAR
------------------------------	-------------------------------	--	--------------------------------	---------

When local altimeter setting not received, use Corpus Christi (CRP) Intl altimeter setting.

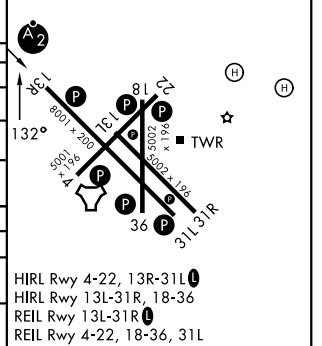


EMERG SAFE ALT 100 NM 11,100



CATEGORY	A	B	C	D
S-ILS 13R	213-¾	200	(200-¾)	
LNAV MDA*	460-¾ 447 (500-¾)	460-1 447 (500-1)		
CIRCLING	460-1 442 (500-1)	480-1 462 (500-1)	520-1½ 502 (600-1½)	580-2 562 (600-2)
CORPUS CHRISTI (CRP) INTL ALTIMETER SETTING				
S-ILS 13R	246-¾	233	(300-¾)	
LNAV MDA*	500-¾ 487 (500-¾)	500-1½ 487 (500-1½)		
CIRCLING	500-1 482 (500-1)	540-1½ 522 (600-1½)	620-2 602 (700-2)	

ELEV	18	TDZE	13
------	----	------	----



CORPUS CHRISTI, TEXAS
Orig 30NOV23

27°42'N-97°17'W

CORPUS CHRISTI NAS (TRUAX FLD) (KNGP)

ILS Y or RNAV (GPS) RWY 13R

SC-3, 11 JUN 2026 to 09 JUL 2026

SC-3, 11 JUN 2026 to 09 JUL 2026