

CORPUS CHRISTI, TEXAS

ILS Z or LOC Z RWY 13R

LOC/DME I-NGP 111.3 Chan 50	APCH CRS 132°	Rwy Idg TDZE Arpt Elev 8001 13 18
---	-------------------------	---

[USN]

CORPUS CHRISTI NAS (TRUAX FLD) (KNGP)

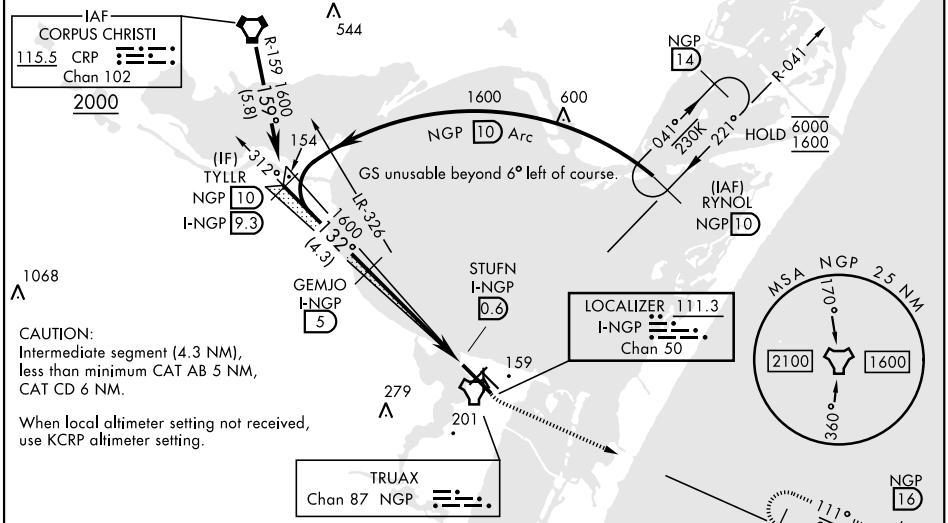
DME required



MISSED APPROACH: Climb to 500 hdg 132°, then climbing left turn to 1600 and intercept NGP TACAN R-111 to HAULS and hold. Continue climb-in-hold to 1600.

* When ALS inop, increase CAT AB vis to 1 mile, CAT CD to 1/8 miles.

ATIS★ 127.9 290.9	APP CON 120.9 259.3	NAVY CORPUS TOWER★ 134.85 340.2	GND CON 118.7 257.85	ASR/PAR
-----------------------------	-------------------------------	---	--------------------------------	---------

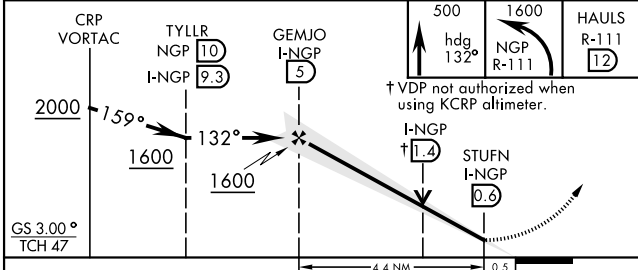


CAUTION:
Intermediate segment (4.3 NM), less than minimum CAT AB 5 NM, CAT CD 6 NM.

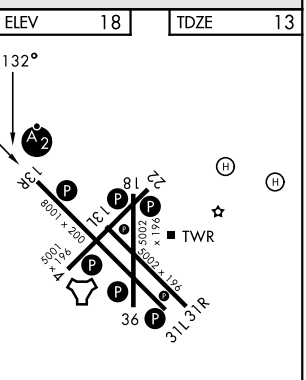
When local altimeter setting not received, use KCRP altimeter setting.

Northbound arrivals on V70-407, V13-20-163 require turn in holding at CRP VORTAC (IAF) (see L-20) for procedure entry, or RADAR vectors. Holding at CRP not authorized for TACAN users.

EMERG SAFE ALT 100 NM 11,100



CATEGORY	A	B	C	D
S-ILS 13R	213-3/4		200 (200-3/4)	
S-LOC 13R*	460-3/4	447 (500-3/4)	460-1	447 (500-1)
CIRCLING	460-1	480-1	520-1 1/2	580-2
	442 (500-1)	462 (500-1)	502 (600-1 1/2)	562 (600-2)
CORPUS CHRISTI (CRP) INTL ALTIMETER SETTING				
S-ILS 13R	246-3/4		233 (300-3/4)	
S-LOC 13R*	500-3/4	487 (500-3/4)	500-1 1/8	487 (500-1 1/8)
CIRCLING	500-1	482 (500-1)	560-1 1/2	620-2
			542 (600-1 1/2)	602 (700-2)



ELEV	18	TDZE	13
FAF to MAP 4.4 NM			
Knots	60	90	120 150 180
Min:Sec	4:24	2:56	2:12 1:46 1:28

CORPUS CHRISTI, TEXAS
Amdt 1 28NOV24

27°42'N-97°17'W

CORPUS CHRISTI NAS (TRUAX FLD) (KNGP)

ILS Z or LOC Z RWY 13R

SC-3, 11 JUN 2026 to 09 JUL 2026

SC-3, 11 JUN 2026 to 09 JUL 2026