

RNAV (GPS) RWY 18

APCH CRS	Rwy ldg	5002
177°	TDZE	18
	Arprt Elev	18

[USN]

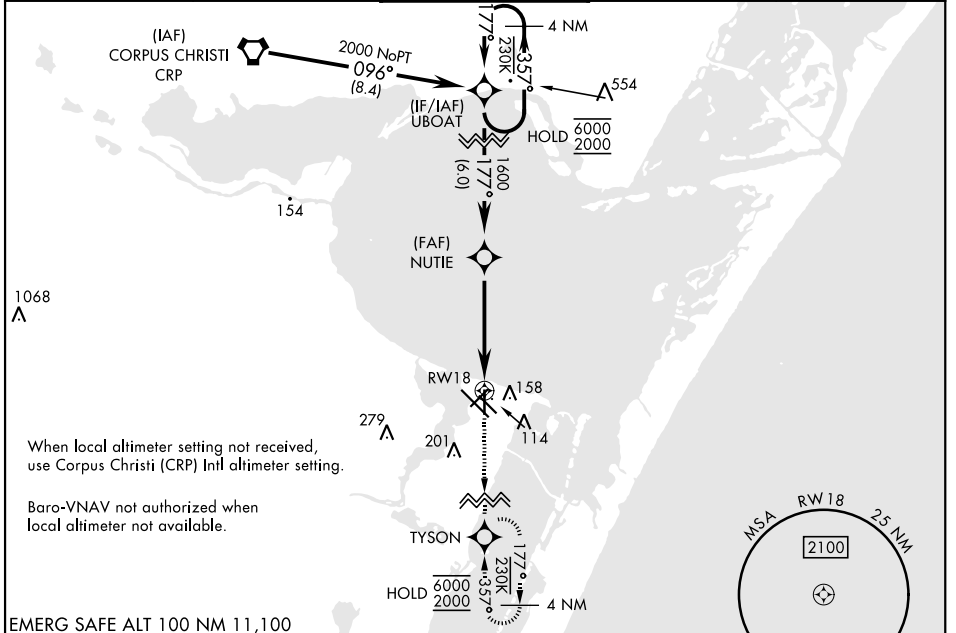
CORPUS CHRISTI NAS (TRUAX FLD) (KNGP)

RNP APCH

For uncompensated Baro-VNAV systems, LNAV/VNAV NA below -15° C (5° F) or above 54° C (129° F).

MISSED APPROACH: Climb to 2000 direct TYSON and hold.

ATIS ★	APP CON	NAVY CORPUS TOWER ★	GND CON	ASR/PAR
127.9 290.9	120.9 259.3	134.850 340.2	118.7 257.85	



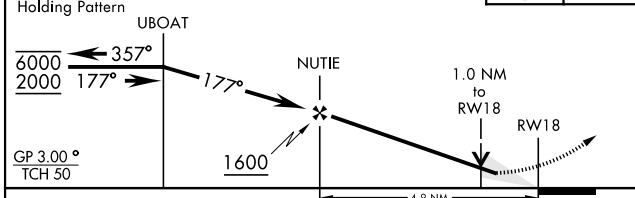
When local altimeter setting not received, use Corpus Christi (CRP) Intl altimeter setting.

Baro-VNAV not authorized when local altimeter not available.

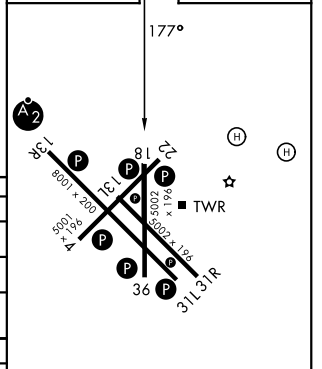
EMERG SAFE ALT 100 NM 11,100

VDP not authorized when using Corpus Christi (CRP) Intl altimeter setting.

2000	TYSON
------	-------



ELEV	18	TDZE	18
------	----	------	----



CATEGORY	A	B	C	D
LNAV/VNAV DA	268-¾	250	(300-¾)	275-¾ (300-¾)
LNAV MDA	380-1		362	(400-1)
CIRCLING	460-1 442 (500-1)	480-1 462 (500-1)	520-1½ 502 (600-1½)	580-2 562 (600-2)
CORPUS CHRISTI (CRP) INTL ALTIMETER SETTING				
LNAV MDA	400-1	382 (400-1)	400-1⅛	382 (400-1⅛)
CIRCLING	500-1	482 (500-1)	540-1½ 522 (600-1½)	620-2 602 (700-2)

HIRL Rwy 4-22, 13R-31L
 HIRL Rwy 13L-31R, 18-36
 REIL Rwy 13L-31R
 REIL Rwy 4-22, 18-36, 31L

RNAV (GPS) RWY 18

SC-3, 11 JUN 2026 to 09 JUL 2026

SC-3, 11 JUN 2026 to 09 JUL 2026