

CORPUS CHRISTI, TEXAS

# RNAV (GPS) RWY 31R

|          |            |      |
|----------|------------|------|
| APCH CRS | Rwy ldg    | 5002 |
| 312°     | TDZE       | 18   |
|          | Arprt Elev | 18   |

[USN]

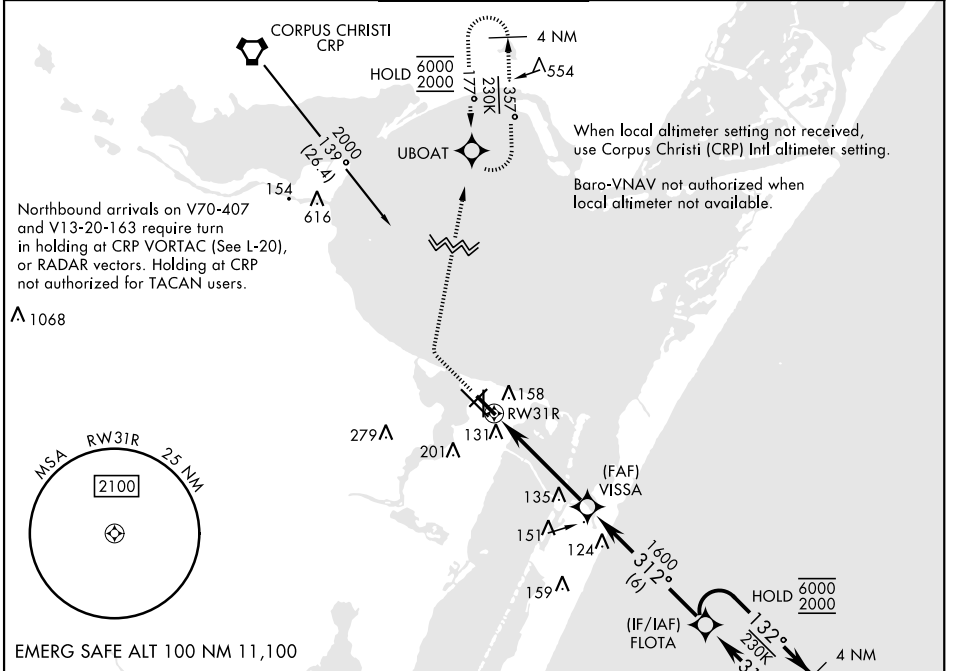
CORPUS CHRISTI NAS (TRUAX FLD) (KNGP)

RNP APCH

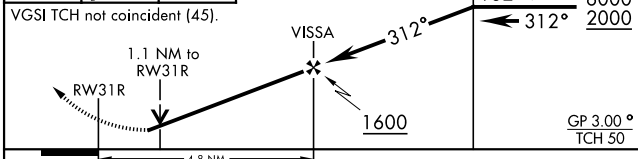
▼ For uncompensated Baro-VNAV systems, LNAV/VNAV NA below -15° C (5° F) or above 54° C (129° F).

MISSED APPROACH: Climb to 600, then climbing right turn to 2000 direct UBOAT and hold.

|             |             |                     |              |         |
|-------------|-------------|---------------------|--------------|---------|
| ATIS ★      | APP CON     | NAVY CORPUS TOWER ★ | GND CON      | ASR/PAR |
| 127.9 290.9 | 120.9 259.3 | 134.85 340.2        | 118.7 257.85 |         |



|                               |      |                        |  |                      |
|-------------------------------|------|------------------------|--|----------------------|
| 600                           | 2000 | UBOAT                  | VDP not authorized when using Corpus Christi (CRP) Intl altimeter setting. | 4 NM Holding Pattern |
| VGS1 TCH not coincident (45). |      | FLOTA 132° 6000 / 2000 |  |                      |



| CATEGORY                                    | A           | B           | C            | D            |
|---|-------------|-------------|--------------|--------------|
| LNAV/VNAV DA                                | 411-1½      |             | 393          | (400-1½)     |
| LNAV MDA                                    | 420-1       | 402 (500-1) | 420-1½       | 402 (500-1½) |
| CIRCLING                                    | 460-1       | 480-1       | 520-1½       | 580-2        |
|   | 442 (500-1) | 462 (500-1) | 502 (600-1½) | 562 (600-2)  |
| CORPUS CHRISTI (CRP) INTL ALTIMETER SETTING |             |             |              |              |
| LNAV MDA                                    | 460-1       | 442 (500-1) | 460-1½       | 442 (500-1½) |
| CIRCLING                                    | 500-1       | 482 (500-1) | 540-1½       | 620-2        |
|   |             |             | 522 (600-1½) | 602 (700-2)  |

|      |    |      |    |
|------|----|------|----|
| ELEV | 18 | TDZE | 18 |
|------|----|------|----|

HIRL Rwy 4-22, 13R-31L

HIRL Rwy 13L-31R, 18-36

REIL Rwy 13L-31R

REIL Rwy 4-22, 18-36, 31L

CORPUS CHRISTI, TEXAS  
Amdt 2 25JAN24

27°42'N-97°17'W

CORPUS CHRISTI NAS (TRUAX FLD) (KNGP)

# RNAV (GPS) RWY 31R

SC-3, 11 JUN 2026 to 09 JUL 2026

SC-3, 11 JUN 2026 to 09 JUL 2026