

CORPUS CHRISTI, TEXAS

RNAV (GPS) RWY 36

[USN]

CORPUS CHRISTI NAS (TRUAX FLD) (KNGP)

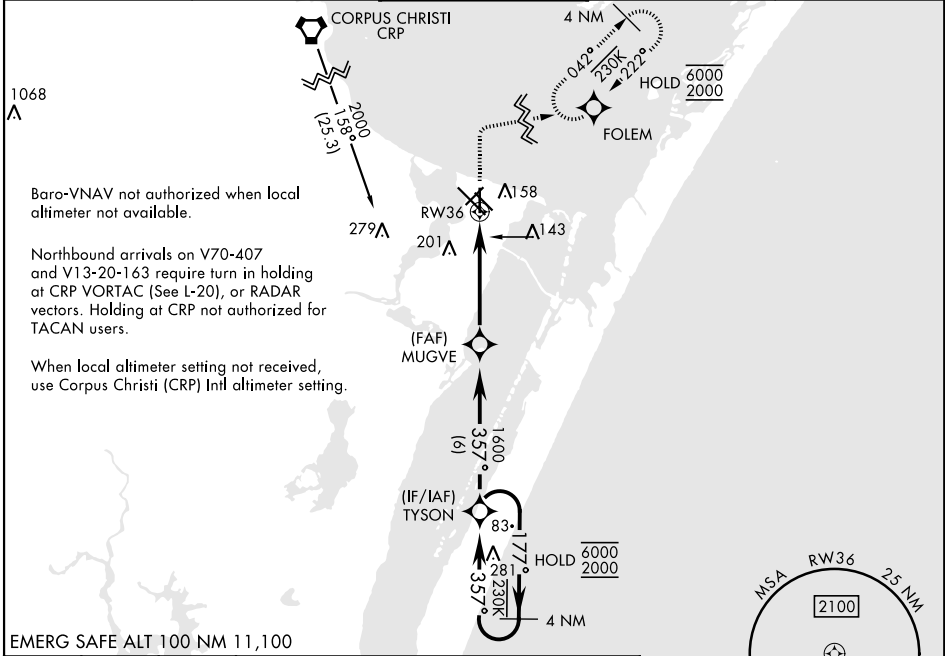
APCH CRS	Rwy Idg	5002
357°	TDZE	18
	Arpt Elev	18

RNP APCH

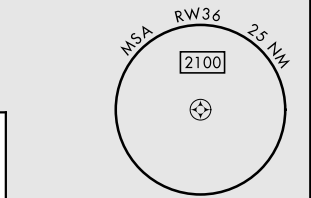
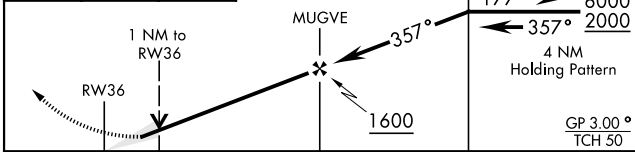
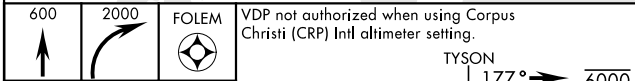
For uncompensated Baro-VNAV systems, LNAV/VNAV NA below -15°C (5°F) or above 54°C (129°F).

MISSED APPROACH: Climb to 600, then climbing right turn to 2000 direct FOLEM and hold.

ATIS ★	APP CON	NAVY CORPUS TOWER ★	GND CON	ASR/PAR
127.9 290.9	120.9 259.3	134.85 340.2	118.7 257.85	

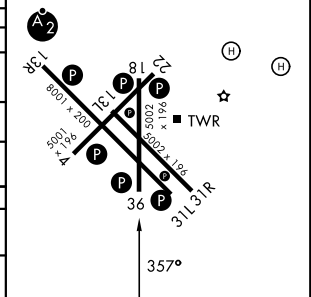


EMERG SAFE ALT 100 NM 11,100



CATEGORY	A	B	C	D
LNAV MDA	400-1 382 (400-1)		400-1½ 382 (400-1½)	
LNAV/VNAV DA		400-1½ 382 (400-1½)		
CIRCLING	460-1 442 (500-1)	480-1 462 (500-1)	520-1½ 502 (600-1½)	580-2 562 (600-2)
CORPUS CHRISTI (CRP) INTL ALTIMETER SETTING				
LNAV MDA	440-1 422 (500-1)		440-1¼ 422 (500-1¼)	
CIRCLING	500-1 482 (500-1)		540-1½ 522 (600-1½)	620-2 602 (700-2)

ELEV	18	TDZE	18
HIRL Rwy 4-22, 13R-31L			
HIRL Rwy 13L-31R, 18-36			
REIL Rwy 13L-31R			
REIL Rwy 4-22, 18-36, 31L			



CORPUS CHRISTI, TEXAS
Amdt 2 30NOV23

27°42'N-97°17'W

CORPUS CHRISTI NAS (TRUAX FLD) (KNGP)

RNAV (GPS) RWY 36

SC-3, 11 JUN 2026 to 09 JUL 2026

SC-3, 11 JUN 2026 to 09 JUL 2026