

CORPUS CHRISTI, TEXAS

# TACAN X RWY 31L

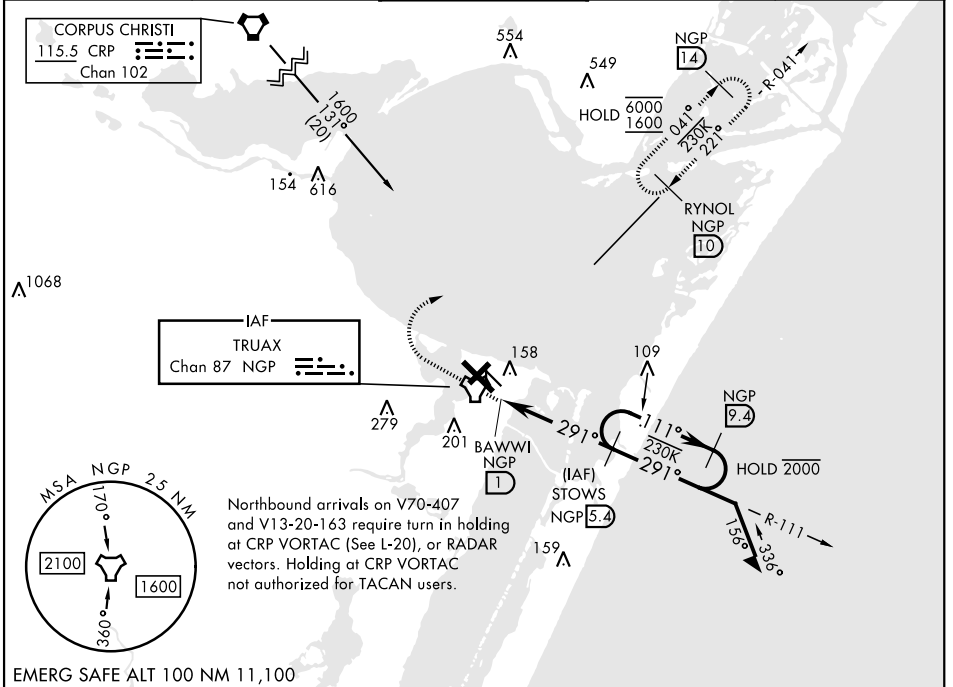
TACAN NGP Chan <b>87</b>	APCH CRS <b>291°</b>	Rwy Idg TDZE Arpt Elev <b>8001</b> <b>17</b> <b>18</b>
-----------------------------	-------------------------	---

[USN]

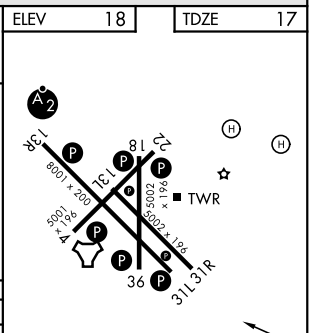
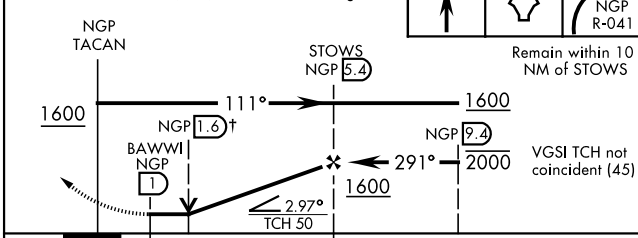
CORPUS CHRISTI NAS (TRUAX FLD) (KNGP)

When local altimeter setting not received, use Corpus Christi (CRP) Intl altimeter setting. MISSED APPROACH: Climb to 1600 direct NGP TACAN and turn right to intercept R-041 and hold.

ATIS★ <b>127.9 290.9</b>	APP CON <b>120.9 259.3</b>	NAVY CORPUS TOWER★ <b>134.85 340.2</b>	GND CON <b>118.7 257.85</b>	ASR/PAR
-----------------------------	-------------------------------	---	--------------------------------	---------



↑ VDP not authorized when using Corpus Christi (CRP) Intl altimeter setting.	ELEV 18	TDZE 17
--	---------	---------



CATEGORY	A	B	C	D
S-31L	420-1 403 (500-1)	420-1 403 (500-1 1/2)	420-1 403 (500-1 1/2)	420-1 403 (500-1 1/2)
CIRCLING	460-1 442 (500-1)	480-1 462 (500-1)	520-1 502 (600-1 1/2)	580-2 562 (600-2)
CORPUS CHRISTI (CRP) INTL ALTIMETER SETTING				
S-31L	460-1 443 (500-1)	460-1 443 (500-1)	460-1 443 (500-1 3/8)	460-1 443 (500-1 3/8)
CIRCLING	500-1 482 (500-1)	500-1 482 (500-1)	540-1 522 (600-1 1/2)	620-2 602 (700-2)

FAF to MAP 4.4 NM					
Knots	60	90	120	150	180
Min:Sec	4:24	2:56	2:12	1:46	1:28

CORPUS CHRISTI, TEXAS 27° 42' N-97° 17' W CORPUS CHRISTI NAS (TRUAX FLD) (KNGP)

Amdt 2 30NOV23

# TACAN X RWY 31L

SC-3, 11 JUN 2026 to 09 JUL 2026

SC-3, 11 JUN 2026 to 09 JUL 2026