

TACAN Z RWY 13R

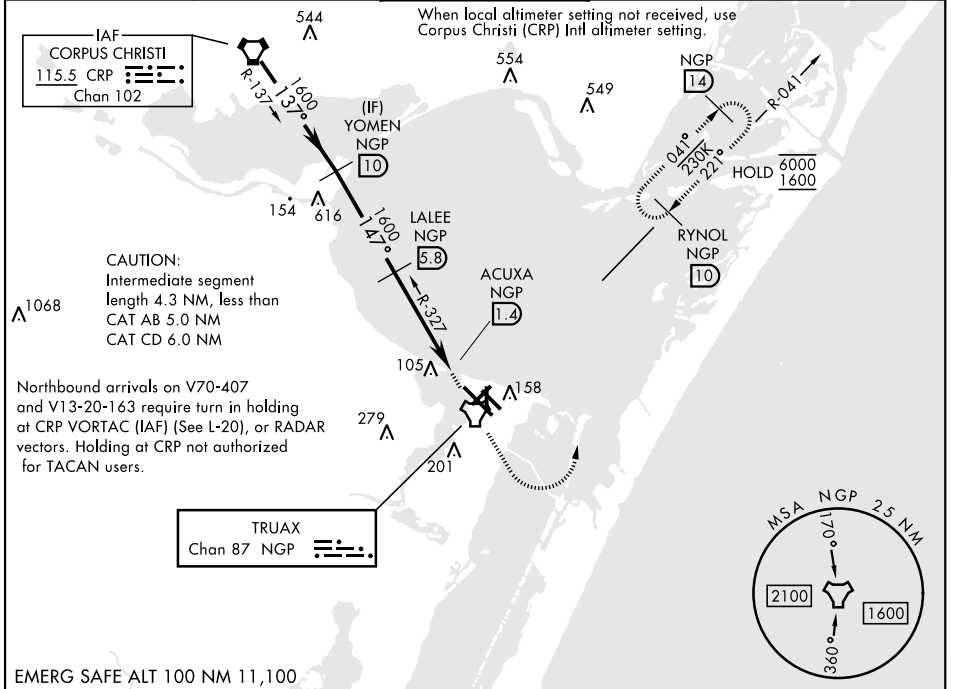
TACAN NGP Chan 87	APCH CRS 147°	Rwy Ldg TDZE Arpt Elev	8001 13 18
-----------------------------	-------------------------	------------------------------	---------------------------------------

[USN]

CORPUS CHRISTI NAS (TRUAX FLD) (KNGP)

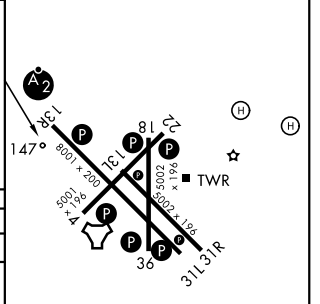
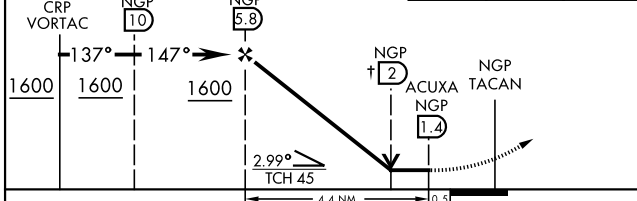
<p>▼ * When ALS inop, increase CAT AB vis to 1 mile, CAT CD vis to 1 1/8 miles.</p>	SALS F	<p>MISSED APPROACH: Climb to 1600 direct NGP TACAN and turn left to intercept R-041 to RYNOL and hold.</p>

<p>ATIS ★</p> <p>127.9 290.9</p>	<p>APP CON</p> <p>120.9 259.3</p>	<p>NAVY CORPUS TOWER ★</p> <p>134.85 340.2</p>	<p>GND CON</p> <p>118.7 257.85</p>	<p>ASR/PAR</p>
---	--	---	---	----------------



<p>↑ VDP not authorized when using Corpus Christi (CRP) Intl altimeter</p>		<p>1600</p>	<p>NGP</p>	<p>NGP R-041</p>
--	--	-------------	------------	------------------

ELEV	18	TDZE	13
------	----	------	----



CATEGORY	A	B	C	D
S-13R *	400-3/4	387 (400-3/4)	400-7/8	387 (400-7/8)
CIRCLING	460-1	480-1	520-1 1/2	580-2
	442 (500-1)	462 (500-1)	502 (600-1 1/2)	562 (600-2)
CORPUS CHRISTI (CRP) INTL ALTIMETER SETTING				
S-13R *	420-3/4	407 (500-3/4)	420-1	407 (500-1)
CIRCLING	500-1	482 (500-1)	540-1 1/2	620-2
			522 (600-1 1/2)	602 (700-2)

HRL Rwy 4-22, 13R-31L
 HRL Rwy 13L-31R, 18-36
 REIL Rwy 13L-31R
 REIL Rwy 4-22, 18-36, 31L

TACAN Z RWY 13R

SC-3, 11 JUN 2026 to 09 JUL 2026

SC-3, 11 JUN 2026 to 09 JUL 2026