

CORPUS CHRISTI, TEXAS

TACAN Z RWY 31L

TACAN NGP Chan 87	APCH CRS 291°	Rwy Ldg TDZE Arprt Elev	8001 17 18
-----------------------------	-------------------------	-------------------------------	---------------------------------------

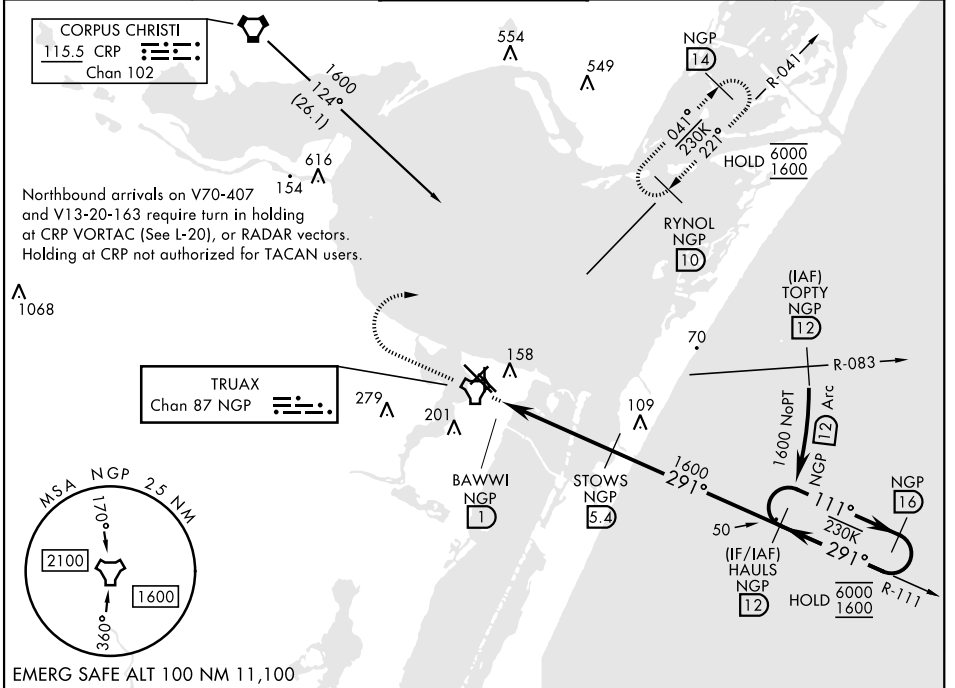
[USN]

CORPUS CHRISTI NAS (TRUAX FLD) (KNGP)

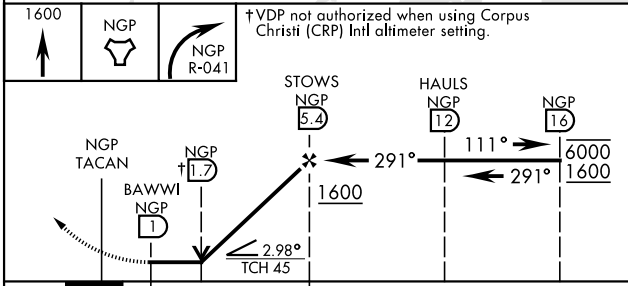
When local altimeter setting not received, use Corpus Christi (CRP) Intl altimeter setting.

MISSED APPROACH: Climb to 1600 direct NGP TACAN and turn right to intercept R-041 to RYNOL and hold.

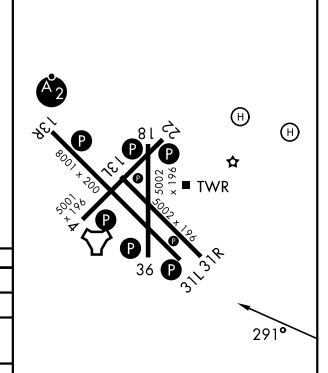
ATIS ★ 127.9 290.9	APP CON 120.9 259.3	NAVY CORPUS TOWER ★ 134.85 340.2	GND CON 118.7 257.85	ASR/PAR
------------------------------	-------------------------------	--	--------------------------------	---------



EMERG SAFE ALT 100 NM 11,100



ELEV	18	TDZE	17
------	----	------	----



CATEGORY	A		B		C		D	
S-31L	420-1	403	(500-1)		420-1½	403	(500-1½)	
CIRCLING	460-1		480-1		520-1½		580-2	
	442 (500-1)		462 (500-1)		502 (600-1½)		562 (600-2)	
CORPUS CHRISTI (CRP) INTL ALTIMETER SETTING								
S-31L	460-1	443	(500-1)		460-1¾	443	(500-1¾)	
CIRCLING	500-1		482 (500-1)		540-1½		620-2	
					522 (600-1½)		602 (700-2)	

HIRL Rwy 4-22, 13R-31L
 HIRL Rwy 13L-31R, 18-36
 REIL Rwy 13L-31R
 REIL Rwy 4-22, 18-36, 31L

CORPUS CHRISTI, TEXAS
 Amdt 2 30NOV23

27°42'N-97°17'W

CORPUS CHRISTI NAS (TRUAX FLD) (KNGP)

TACAN Z RWY 31L

SC-3, 11 JUN 2026 to 09 JUL 2026

SC-3, 11 JUN 2026 to 09 JUL 2026