

CORPUS CHRISTI, TEXAS

VOR/DME or TACAN Y RWY 31L

VORTAC CRP 115.5 Chan 102	APCH CRS 318°	Rwy ldg TDZE 17 Arprt Elev 18
---	-------------------------	---

[USN]

CORPUS CHRISTI NAS (TRUAX FLD) (KNGP)

When local altimeter setting not received, use Corpus Christi (CRP) Intl altimeter setting.

MISSED APPROACH: Climb to 600 hdg 318°, then climbing right turn to 1600 to intercept CRP VORTAC R-138 to VICCC and hold.

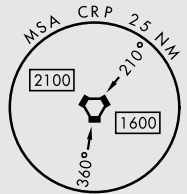
ATIS ★ 127.9 290.9	APP CON 120.9 259.3	NAVY CORPUS TOWER ★ 134.85 340.2	GND CON 118.7 257.85	ASR/PAR
------------------------------	-------------------------------	--	--------------------------------	---------

CORPUS CHRISTI
115.5 CRP
Chan 102



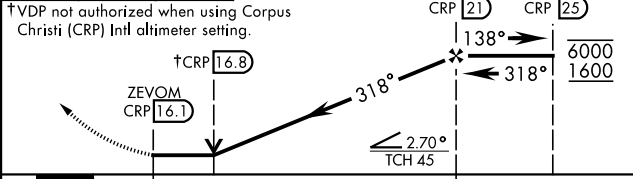
Northbound arrivals on V70-407 and V13-20-163 require turn in holding at CRP VORTAC (See L-20), or RADAR vectors. Holding at CRP not authorized for TACAN users.

▲ 1068

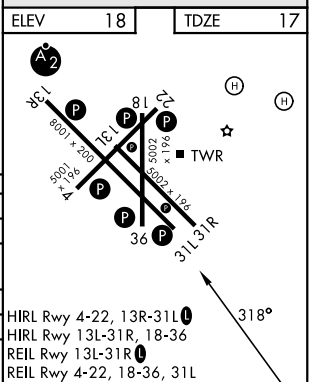


EMERG SAFE ALT 100 NM 11,100

600 hdg 318°	1600 CRP R-138	VICCC CRP 21	VGSI and descent angles not coincident. (VGSI Angle 3.00°)
--------------	----------------	--------------	--



CATEGORY	A	B	C	D
S-31L	420-1 403 (500-1)	420-1½ 403 (500-1½)		
CIRCLING	460-1 442 (500-1)	480-1 462 (500-1)	520-1½ 502 (600-1½)	580-2 562 (600-2)
CORPUS CHRISTI (CRP) INTL ALTIMETER SETTING				
S-31L	440-1 423 (500-1)	440-1¼ 423 (500-1¼)		
CIRCLING	500-1 482 (500-1)	540-1½ 522 (600-1½)	620-2 602 (700-2)	



CORPUS CHRISTI, TEXAS
Amdt 2 30NOV23

27° 42' N-97° 17' W CORPUS CHRISTI NAS (TRUAX FLD) (KNGP)

VOR/DME or TACAN Y RWY 31L

SC-3, 11 JUN 2026 to 09 JUL 2026

SC-3, 11 JUN 2026 to 09 JUL 2026