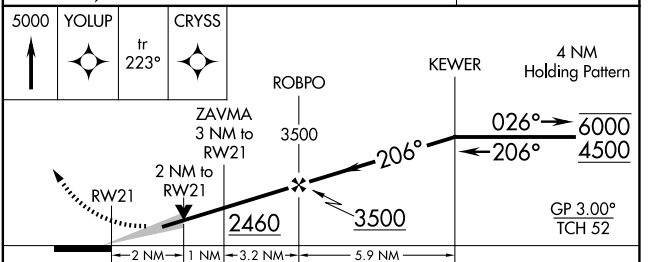
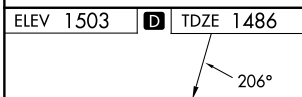
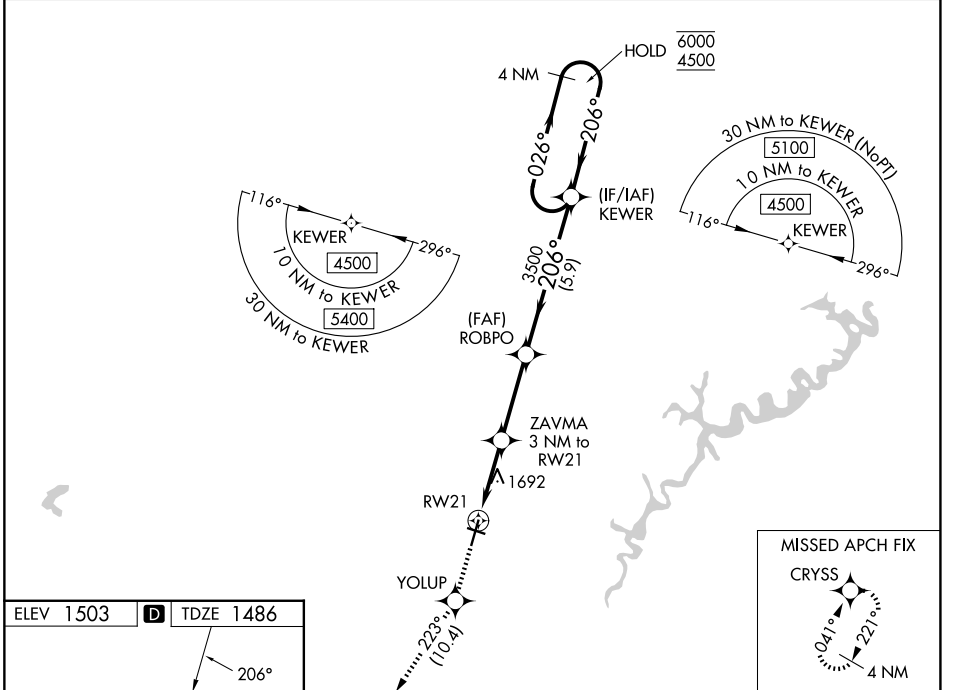


WAAS CH 90105 W21A	APP CRS 206°	Rwy Ldg TDZE Apt Elev	5465 1486 1503
--	------------------------	-----------------------------	---

RNAV (GPS) RWY 21

ALTOONA/BLAIR COUNTY (A00)

RNP APCH - GPS.		MALSRL AS	MISSED APPROACH: Climb to 5000 direct YOLUP and on track 223° to CRYSS and hold, continue climb-in-hold to 5000.
<p>▼ Circling NA to Rwy 12 and 30. Circling NA for Cats C, D northwest of Rwy 12 and 21. For uncompensated Baro-VNAV systems, LNAV/VNAV NA below -17°C or above 54°C. For inop ALS, increase LPV visibility all Cats to 1 3/8 SM.</p>			
ASOS 127.125	JOHNSTOWN APP CON ★ 121.2 299.2	CTAF 123.60	



CATEGORY	A	B	C	D
LPV DA		1977-1	491 (500-1)	
LNAV/VNAV DA		1999-1	513 (500-1)	
LNAV MDA	2160-1/2	674 (700-1/2)	2160-1/2	674 (700-1/2)
CIRCLING	2240-1	737 (800-1)	2800-3 1297 (1300-3)	2840-3 1337 (1400-3)

NE-4, 11 JUN 2026 to 09 JUL 2026

NE-4, 11 JUN 2026 to 09 JUL 2026