

WAAS CH <b>82030</b> <b>W03B</b>	APP CRS <b>041°</b>	Rwy Ldg TDZE <b>1503</b> Apt Elev <b>1503</b>
--	------------------------	---

# RNAV (GPS) Y RWY 3

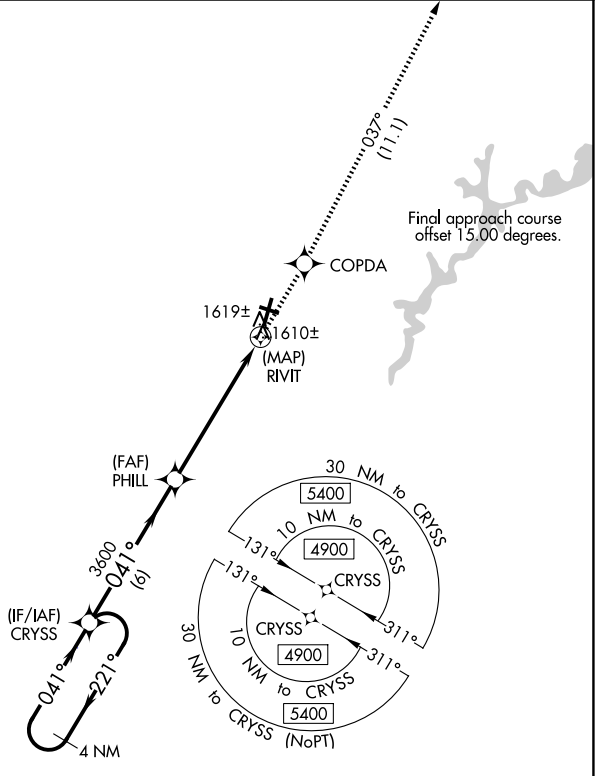
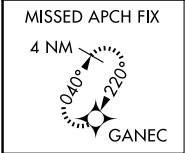
ALTOONA/BLAIR COUNTY (A00)

RNP APCH - GPS.

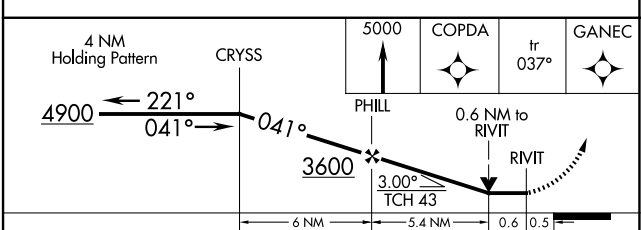
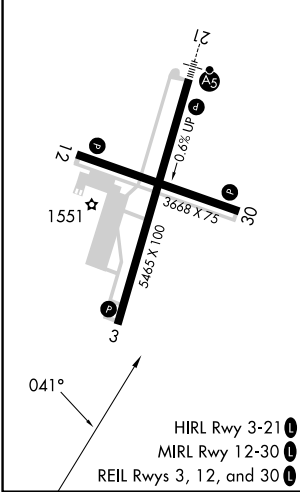
▼ When local altimeter setting not received, use HMZ altimeter setting; increase all MDA 100 feet. Increase LNAV and LP Cats C/D visibilities  $\frac{3}{8}$  SM and Circling Cat A  $\frac{1}{4}$  SM. Rwy 3, helicopter visibility reduction below  $\frac{3}{4}$  SM NA. Circling NA for Rwys 12 and 30. VDP NA when using HMZ altimeter setting. Circling NA for Cats C, D northwest of Rwys 12 and 21.

MISSED APPROACH: Climb to 5000 direct COPDA on track 037° to GANEC and hold, continue climb-in-hold to 5000.

ASOS <b>127.125</b>	JOHNSTOWN APP CON ★ <b>121.2 299.2</b>	CTAF <b>123.60</b>
------------------------	---	-----------------------



ELEV 1503	<b>D</b>	TDZE 1503
-----------	----------	-----------



CATEGORY	A	B	C	D
LP MDA	1860-1 357 (400-1)			
LNAV MDA	1880-1 377 (400-1)			
CIRCLING	2240-1 737 (800-1)	2240-1 $\frac{1}{4}$ 737 (800-1 $\frac{1}{4}$ )	2800-3 1297 (1300-3)	2840-3 1337 (1400-3)

NE-4, 11 JUN 2026 to 09 JUL 2026

NE-4, 11 JUN 2026 to 09 JUL 2026