

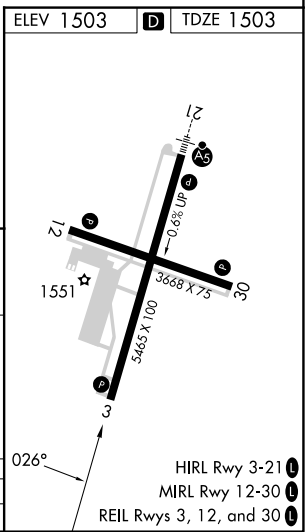
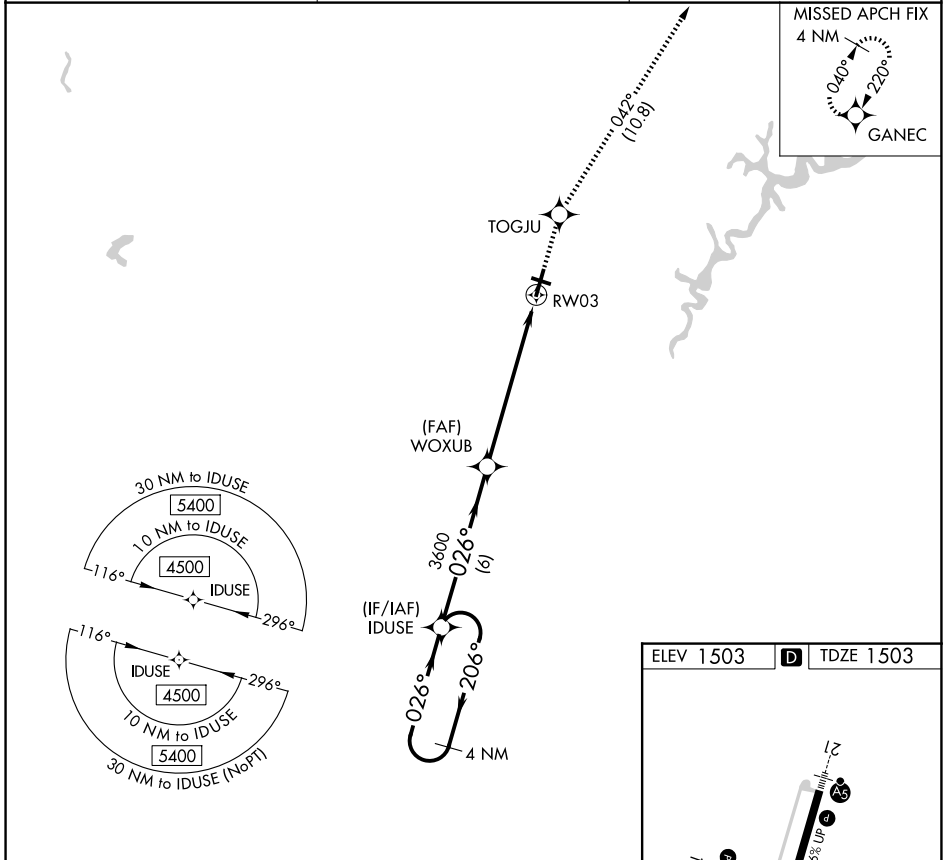
WAAS CH <b>82529</b> W03A	APP CRS <b>026°</b>	Rwy Ldg TDZE <b>1503</b> Apt Elev <b>1503</b>
---------------------------------	------------------------	---

# RNAV (GPS) Z RWY 3

ALTOONA/BLAIR COUNTY (A00)

<p><b>▼</b> Rwy 3 helicopter visibility reduction below 3/4 SM NA. DME/DME RNP-0.3 NA. When local altimeter setting not received, use Bedford County altimeter setting and increase all DA 84 feet, and increase all visibilities 3/8 mile.</p>	<p><b>MISSED APPROACH:</b> Climb to 5000 direct TOGJU and on track 042° to GANEC and hold, continue climb-in-hold to 5000.</p>
---	--

ASOS <b>127.125</b>	JOHNSTOWN APP CON ★ <b>121.2 299.2</b>	CTAF <b>123.60</b>
------------------------	---	-----------------------



VGSI and RNAV glidepath not coincident (VGSI Angle 3.00/TCH 43).

4 NM Holding Pattern	IDUSE	5000	TOGJU	tr 042°	GANEC
4500 ← 206°	→ 026°		WOXUB 3600		RW03
GP 3.00°			3600		
TCH 55			6 NM	6.4 NM	
CATEGORY	A	B	C	D	
LPV DA		1828-1	325 (400-1)		

NE-4, 11 JUN 2026 to 09 JUL 2026

NE-4, 11 JUN 2026 to 09 JUL 2026