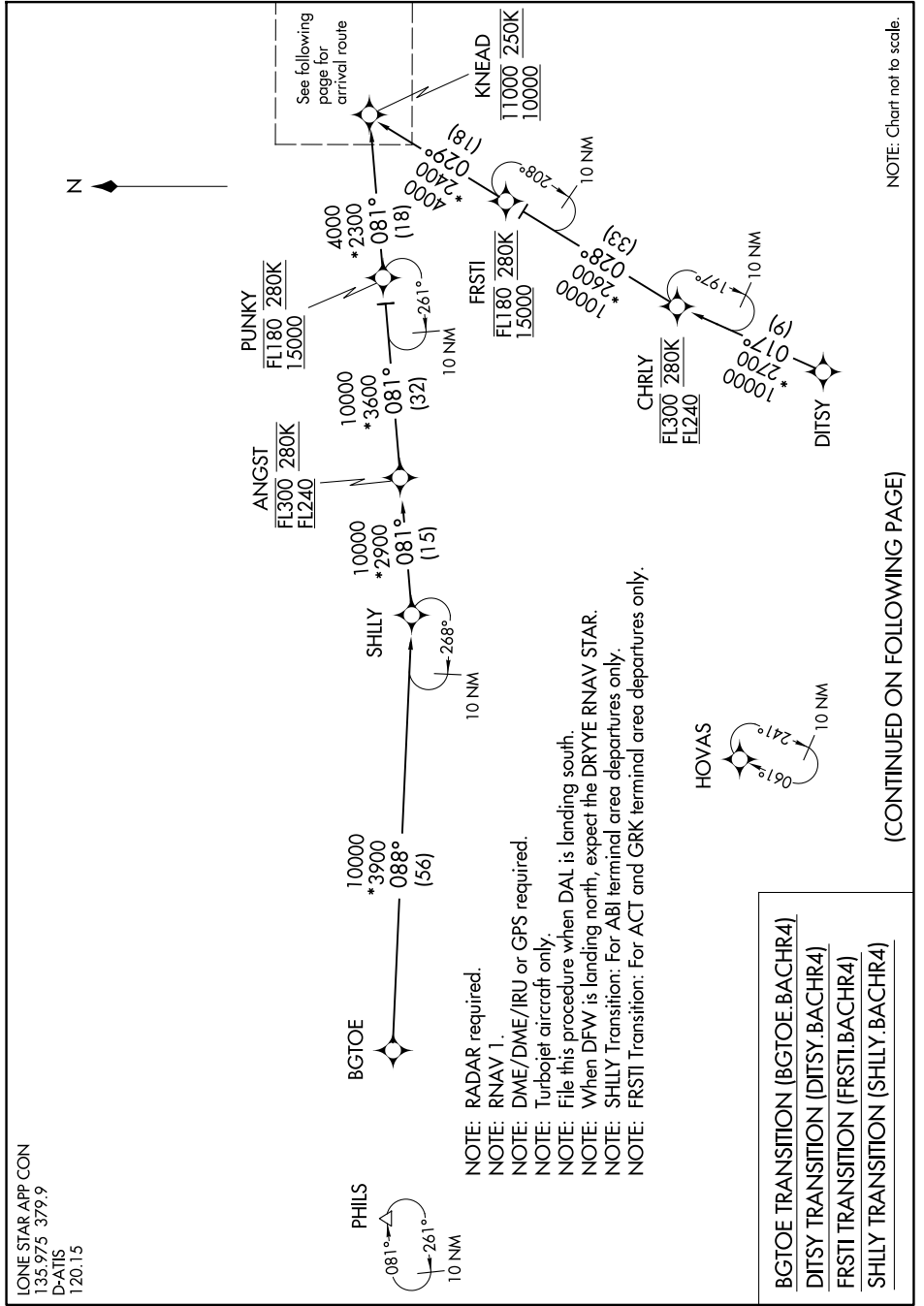


BACHR FOUR ARRIVAL (RNAV) Transition Routes

SC-2, 11 JUN 2026 to 09 JUL 2026



NOTE: Chart not to scale.

- NOTE: RADAR required.
- NOTE: RNAV 1.
- NOTE: DME/DME/IRU or GPS required.
- NOTE: Turbojet aircraft only.
- NOTE: File this procedure when DAL is landing south.
- NOTE: When DFW is landing north, expect the DRYEY RNAV STAR.
- NOTE: SHILLY Transition: For ABI terminal area departures only.
- NOTE: FRSTI Transition: For ACT and GRK terminal area departures only.

- BGTOE TRANSITION (BGTOE.BACHR4)
- DITSY TRANSITION (DITSY.BACHR4)
- FRSTI TRANSITION (FRSTI.BACHR4)
- SHILLY TRANSITION (SHILLY.BACHR4)

(CONTINUED ON FOLLOWING PAGE)

BACHR FOUR ARRIVAL (RNAV) Transition Routes

SC-2, 11 JUN 2026 to 09 JUL 2026