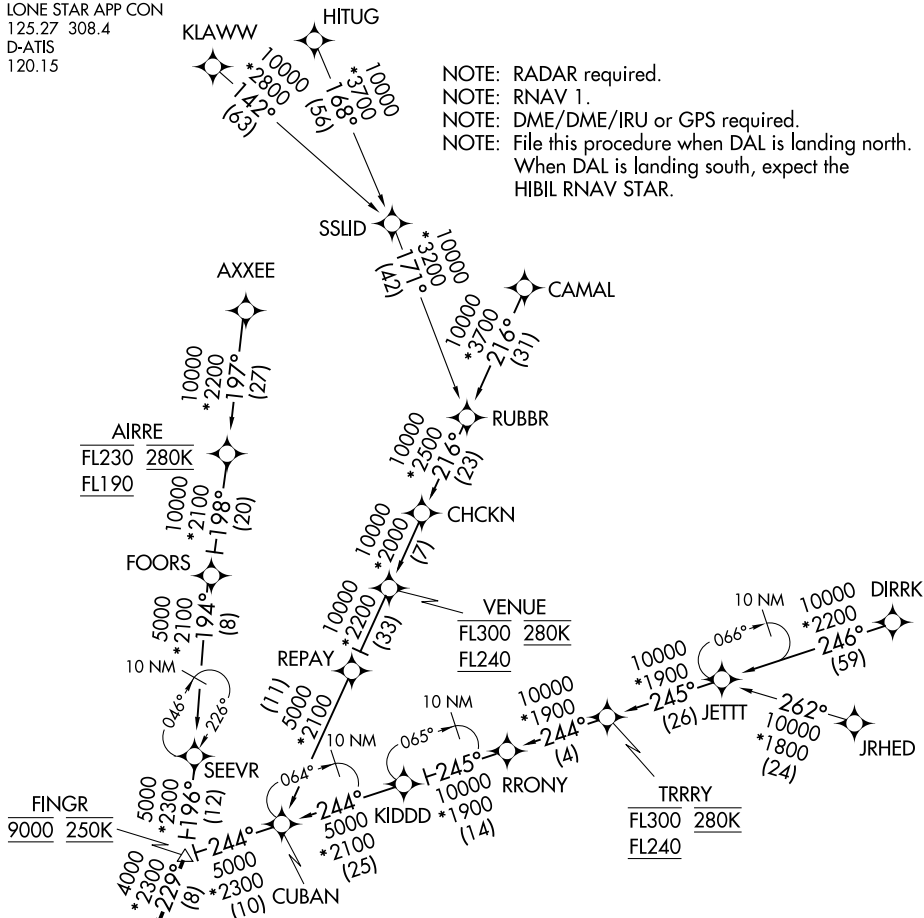


# CRIKT ONE ARRIVAL (RNAV)

LONE STAR APP CON  
125.27 308.4  
D-ATIS  
120.15

NOTE: RADAR required.  
NOTE: RNAV 1.  
NOTE: DME/DME/IRU or GPS required.  
NOTE: File this procedure when DAL is landing north.  
When DAL is landing south, expect the HIBIL RNAV STAR.



NOTE: JRHED, RUBBR, and JETTT Transitions: ATC assigned only.  
NOTE: AXXEE and RRONY Transitions: For aircraft filing FL230 and below.  
NOTE: AIRRE Transition: For traffic below FL190 only.  
NOTE: Aircraft departing the Oklahoma City terminal area file and expect the AIRRE enroute transition.

### ARRIVAL ROUTE DESCRIPTION

<u>AIRRE TRANSITION (AIRRE.CRIKT1)</u>	<u>JETTT TRANSITION (JETTT.CRIKT1)</u>
<u>AXXEE TRANSITION (AXXEE.CRIKT1)</u>	<u>JRHED TRANSITION (JRHED.CRIKT1)</u>
<u>CAMAL TRANSITION (CAMAL.CRIKT1)</u>	<u>KLAWWW TRANSITION (KLAWWW.CRIKT1)</u>
<u>DIRRK TRANSITION (DIRRK.CRIKT1)</u>	<u>RRONY TRANSITION (RRONY.CRIKT1)</u>
<u>HITUG TRANSITION (HITUG.CRIKT1)</u>	<u>RUBBR TRANSITION (RUBBR.CRIKT1)</u>

From FINGR on track 229° to SLANT, then on track 193° to CRIKT, then on track 193°. Expect RADAR vectors to final approach course.

NOTE: Chart not to scale.

# CRIKT ONE ARRIVAL (RNAV)

(FINGR.CRIKT1) 31MAR16