

EMMTT FOUR DEPARTURE (RNAV)

SC-2, 11 JUN 2026 to 09 JUL 2026

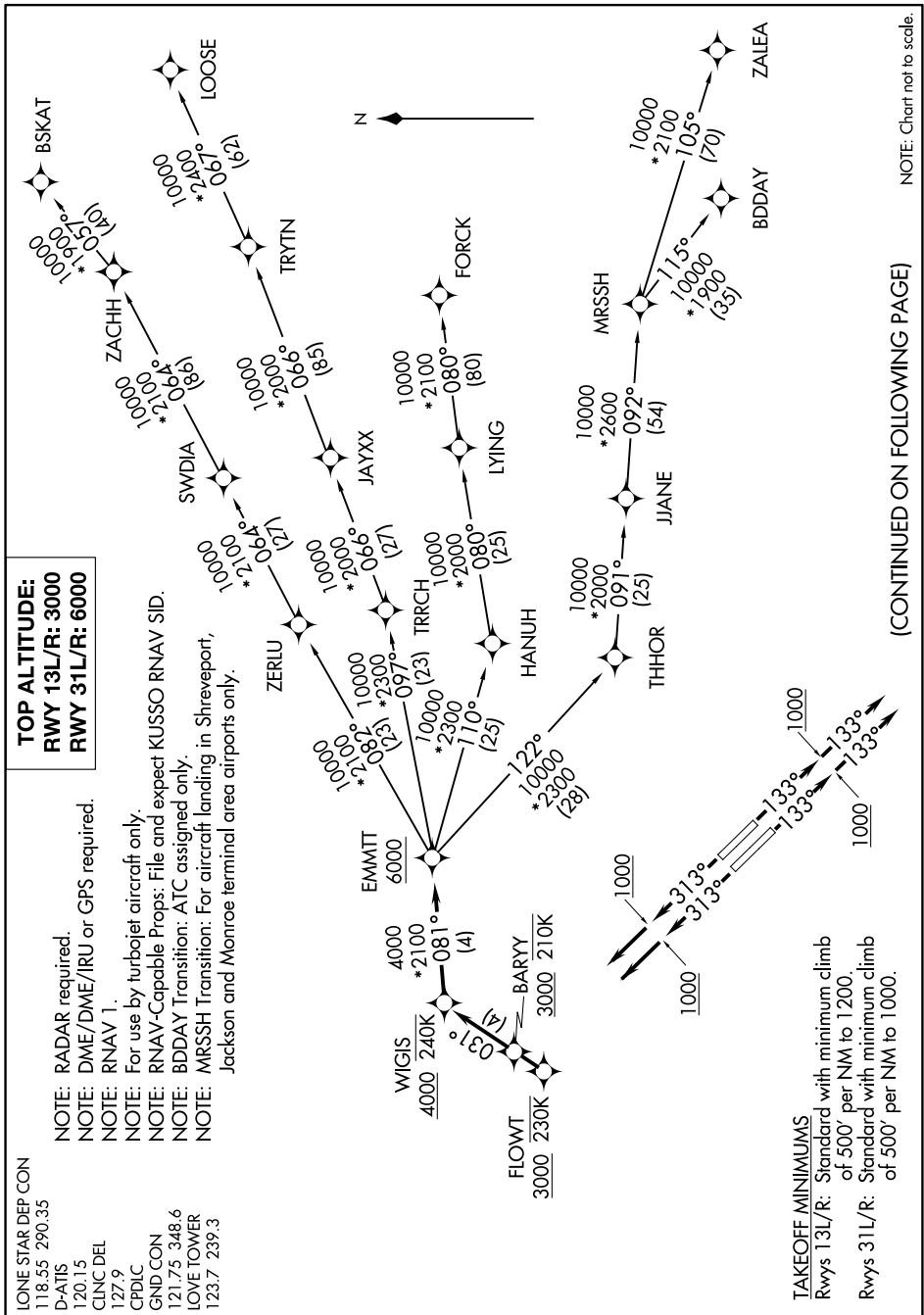
TOP ALTITUDE:
RWY 13L/R: 3000
RWY 31L/R: 6000

- NOTE: RADAR required.
- NOTE: DME/DME/IRU or GPS required.
- NOTE: RNAV 1.
- NOTE: For use by turbojet aircraft only.
- NOTE: RNAV-Capable Props: File and expect KUSSO RNAV SID.
- NOTE: BDDAY Transition: ATC assigned only.
- NOTE: MRSSH Transition: For aircraft landing in Shreveport, Jackson and Monroe terminal area airports only.

LONE STAR DEP CON
 118.55 290.35
 D-ATIS
 120.15
 CLNC DEL
 127.9
 CPDLC
 GND CON
 121.75 348.6
 LOVE TOWER
 123.7 239.3

EMMTT FOUR DEPARTURE (RNAV)

(EMMTT4.EMMTT) 31MAR16



(CONTINUED ON FOLLOWING PAGE)

NOTE: Chart not to scale.

SC-2, 11 JUN 2026 to 09 JUL 2026