

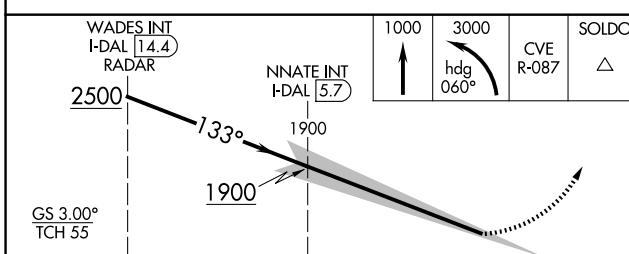
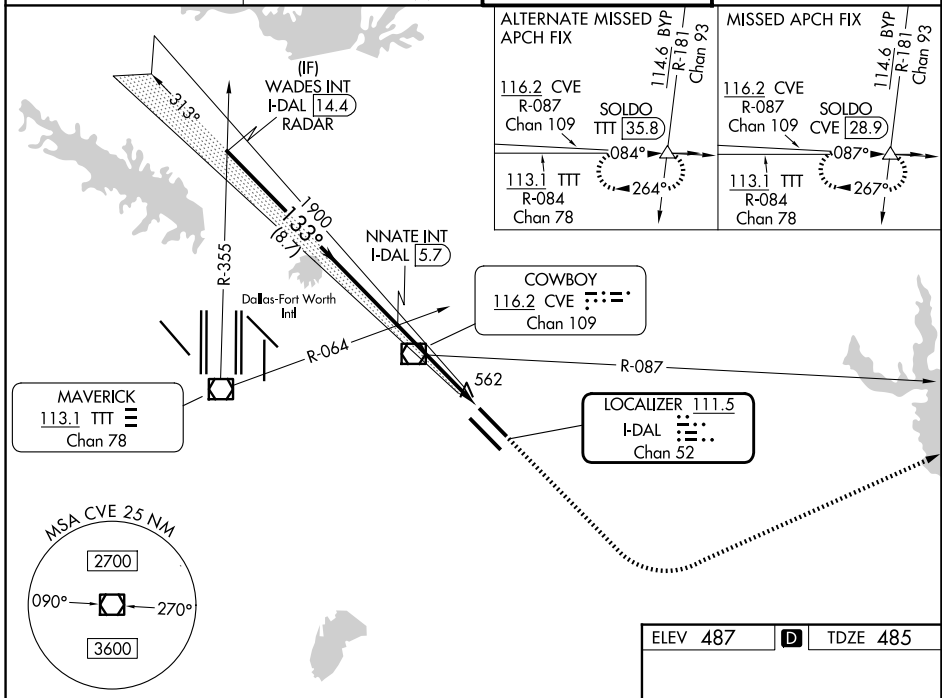
LOC/DME I-DAL 111.5 Chan 52	APP CRS 133°	Rwy Ldg 7352	TDZE 485
		Apt Elev 487	

ILS RWY 13L (SA CAT I & II)

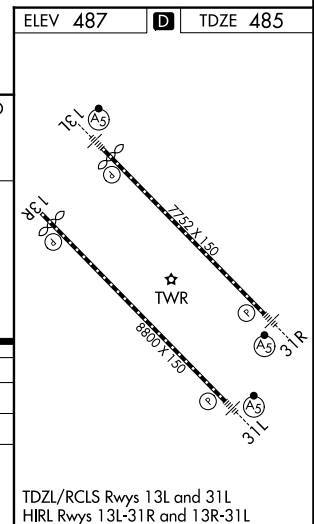
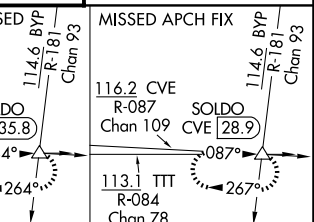
DALLAS LOVE FLD (DAL)

RADAR required for procedure entry.		MALSR 	MISSED APPROACH: Climb to 1000 then climbing left turn to 3000 on heading 060° and CVE VOR/DME R-087 to SOLDO INT/CVE 28.9 DME and hold.
▼ Simultaneous approach authorized, SA CAT I/II: Requires specific OPSPEC, MSPEC, or LOA approval.			

D-ATIS 120.15	LONE STAR APP CON 124.3 282.275 (N) 125.2 343.65 (S)	LOVE TOWER 123.7 239.3	GND CON 121.75 348.6
-------------------------	--	----------------------------------	--------------------------------



CATEGORY	A	B	C	D
S-ILS 13L	SA CAT I	RA 172/14	150 DA 635	
S-ILS 13L	SA CAT II	RA 136/12	100 DA 585	



SA CATEGORY I & II ILS SPECIAL AIRCREW & AIRCRAFT CERTIFICATION REQUIRED

TDZL/RCLS Rwy's 13L and 31L
HIRL Rwy's 13L-31R and 13R-31L

SC-2, 11 JUN 2026 to 09 JUL 2026

SC-2, 11 JUN 2026 to 09 JUL 2026