


APP CRS	Rwy Ldg	7352
	TDZE	485
133°	Apt Elev	487

RNAV (RNP) W RWY 13L

DALLAS LOVE FLD (DAL)

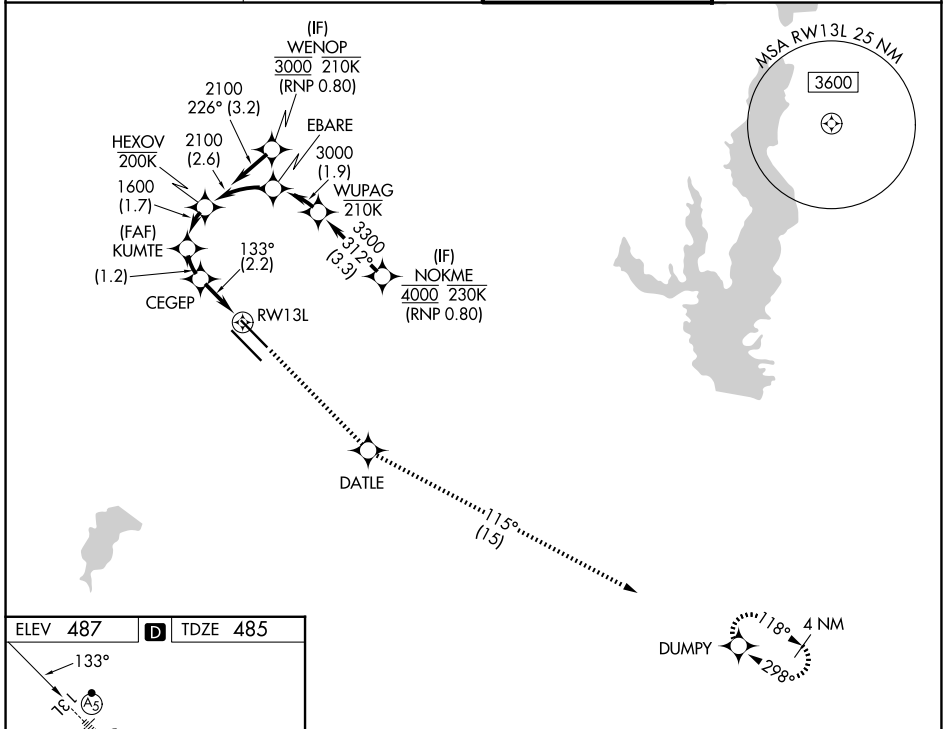
RNP AR APCH. RF required.

Simultaneous approach authorized. For uncompensated Baro-VNAV systems, procedure NA below -6°C or above 54°C. For inop ALS, increase RNP 0.11 all Cats visibility to RVR 4500.

MALSR 

MISSED APPROACH: Climb to 3000 direct DATLE and on track 115° to DUMPY and hold.

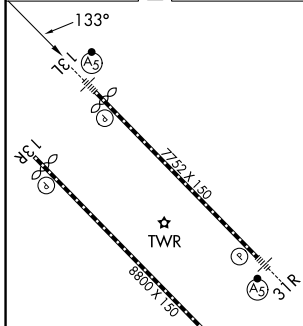
D-ATIS 120.15	LONE STAR APP CON 124.3 282.275 (N) 125.2 343.65 (S)	LOVE TOWER 123.7 239.3	GND CON 121.75 348.6
-------------------------	--	----------------------------------	--------------------------------



SC-2, 11 JUN 2026 to 09 JUL 2026

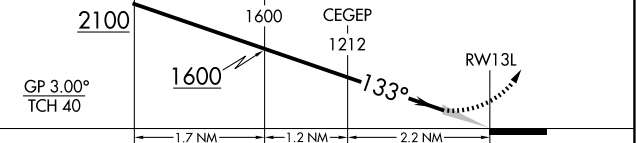
SC-2, 11 JUN 2026 to 09 JUL 2026

ELEV 487	D	TDZE 485
-----------------	----------	-----------------



See planview for multiple IF locations.

3000	DATLE	tr 115°	DUMPY
------	-------	---------	-------



CATEGORY	A	B	C	D
RNP 0.11 DA		754/24	269 (300-½)	
RNP 0.30 DA		846/40	361 (400-¾)	

TDZL/RCLS Rwws 13L and 31L
HIRL Rwws 13L-31R, and 13R-31L

RNAV (RNP) W RWY 13L