

# RNAV (RNP) Z RWY 31L

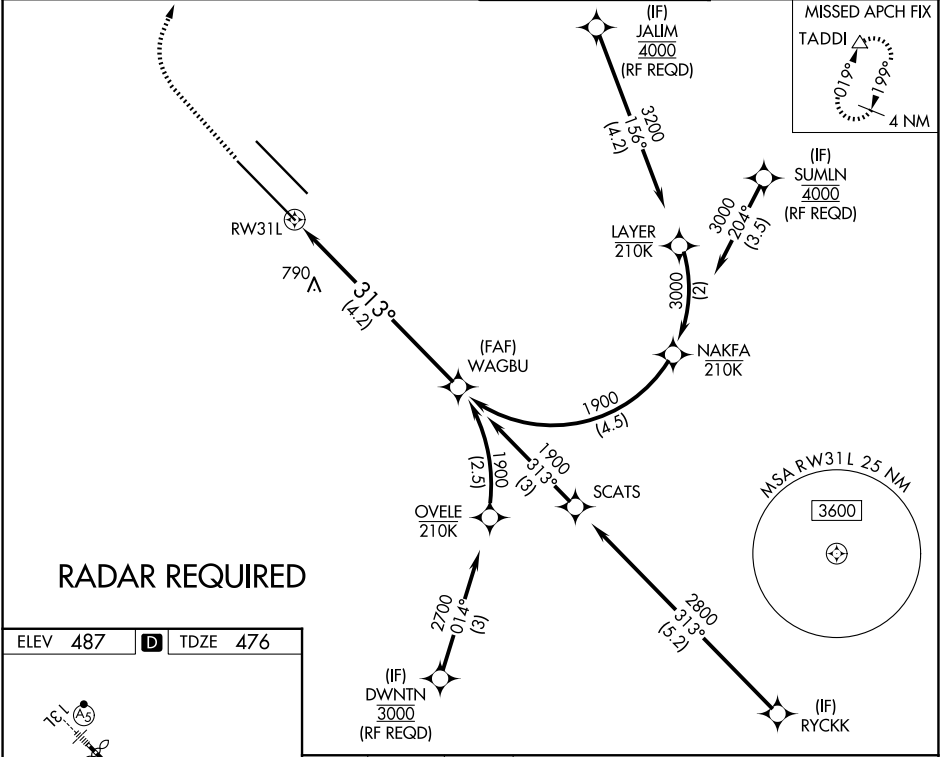
DALLAS LOVE FLD (DAL)

APP CRS <b>313°</b>	Rwy Ldg <b>8000</b>
	TDZE <b>476</b>
	Apt Elev <b>487</b>

▼ For uncompensated Baro-VNAV systems, procedure NA below -5°C (23°F) or above 48°C (119°F). Simultaneous approach authorized. GPS required. Use of FD or AP providing RNAV track guidance required during simultaneous operations. For inop MALSR, increase RNP 0.30 visibility all Cats to 2½ miles.

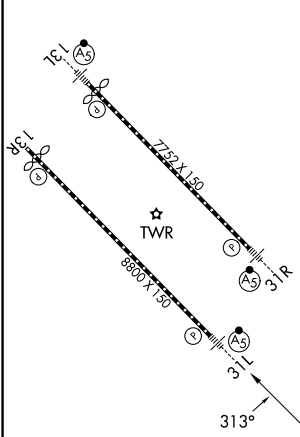
MALSR MISSED APPROACH: Climb to 1700 then climbing right turn to 4000 direct TADDI and hold.

D-ATIS <b>120.15</b>	LONE STAR APP CON <b>124.3 282.275 (N)</b> <b>125.2 343.65 (S)</b>	LOVE TOWER <b>123.7 239.3</b>	GND CON <b>121.75 348.6</b>
-------------------------	--	----------------------------------	--------------------------------



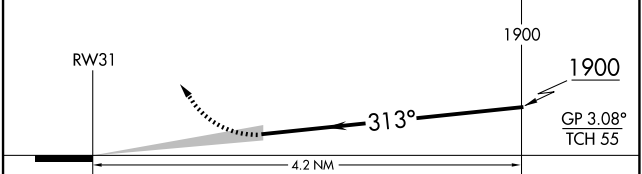
**RADAR REQUIRED**

ELEV 487	<b>D</b>	TDZE 476
----------	----------	----------



TDZL/RCLS Rwy 13L and 31L  
HIRL Rwy 13L-31R, and 13R-31L

1700 4000 TADDI See planview for multiple IF locations.



CATEGORY	A	B	C	D
RNP 0.30 DA		1117-1½	641 (700-1½)	

**AUTHORIZATION REQUIRED**

SC-2, 11 JUN 2026 to 09 JUL 2026

SC-2, 11 JUN 2026 to 09 JUL 2026