


# RNAV (RNP) Z RWY 31R

DALLAS LOVE FLD (DAL)

APP CRS <b>313°</b>	Rwy Ldg <b>6952</b>
	TDZE <b>487</b>
	Apt Elev <b>487</b>

RNP AR APCH.  
 ▼ For uncompensated Baro-VNAV systems, procedure NA below -5°C (23°F) or above 54°C (130°F). Use of FD or AP providing RNAV track guidance required during simultaneous operations. Simultaneous approach authorized.

MALSR 

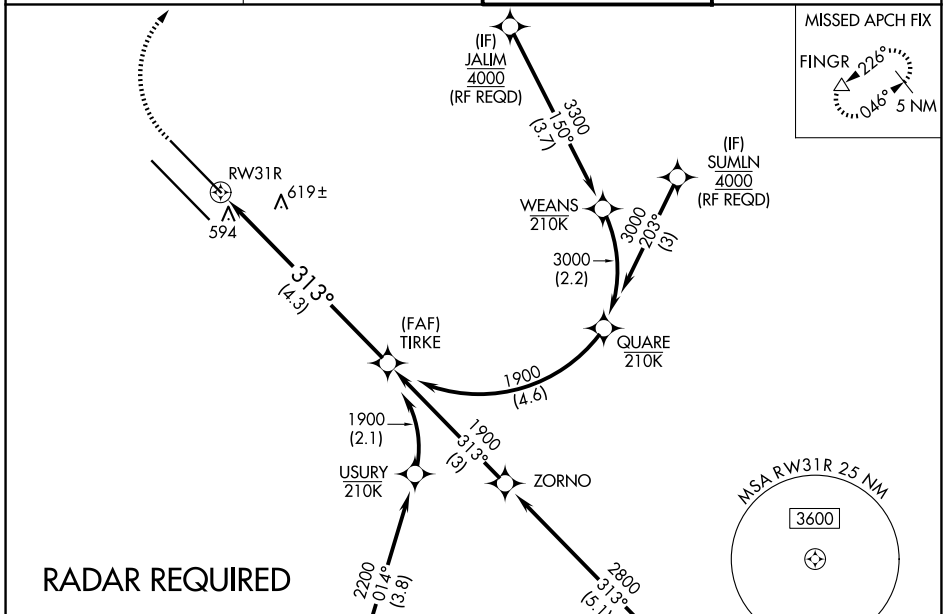
MISSED APPROACH: Climb to 900 then climbing right turn to 5000 direct FINGR and hold.

D-ATIS  
**120.15**

LONE STAR APP CON  
**124.3 282.275 (N)**  
**125.2 343.65 (S)**

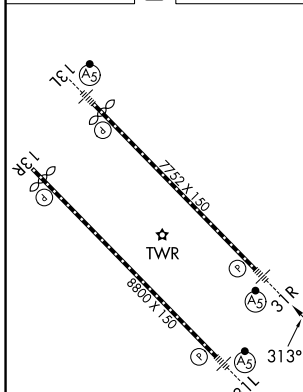
LOVE TOWER  
**123.7 239.3**

GND CON  
**121.75 348.6**



**RADAR REQUIRED**

ELEV 487 **D** TDZE 487



(IF) DWNTN 3000 (RF REQD)

(IF) KELHR

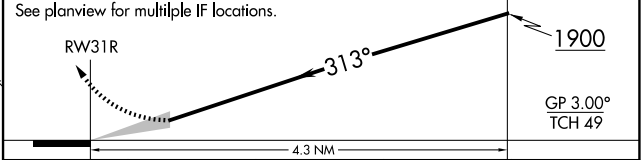
(IF) JALIM 4000 (RF REQD)

(IF) SUMLIN 4000 (RF REQD)

MSA RWY 31R 25 NM  
3600

900 5000 FINGR

VGSI and RNAV glidepath not coincident (VGSI Angle 3.00/TCH 55).



CATEGORY	A	B	C	D
RNP 0.16 DA		796/24	309 (400-½)	
RNP 0.30 DA		895/45	408 (500-¾)	

**AUTHORIZATION REQUIRED**