



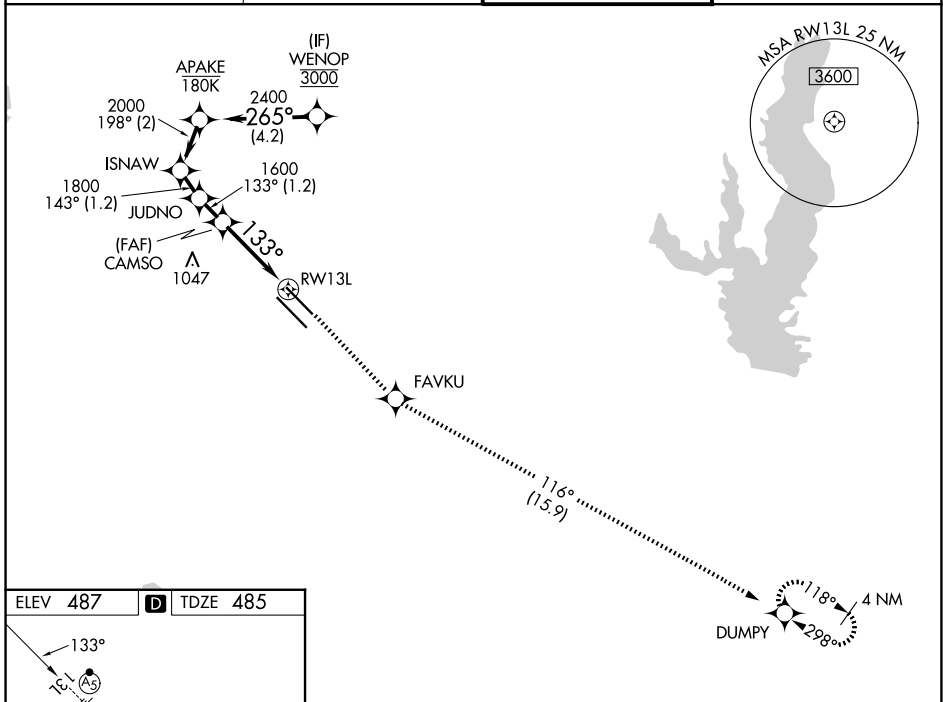
WAAS CH <b>50547</b> <b>W13A</b>	APP CRS <b>133°</b>	Rwy Ldg <b>7352</b> TDZE <b>485</b> Apt Elev <b>487</b>
--	------------------------	---

# RNAV (GPS) Y RWY 13L

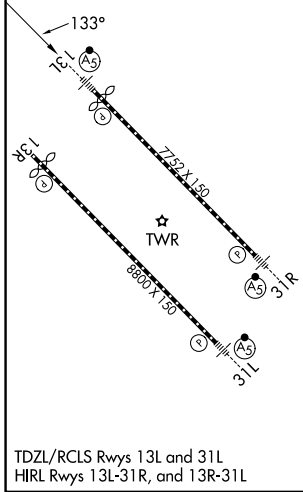
DALLAS LOVE FLD (DAL)

RNP APCH - GPS.		MISSED APPROACH: Climb to 3000 direct FAVKU and on track 116° to DUMPY and hold.
RADAR required for procedure entry.		
⚠ For uncompensated Baro-VNAV systems, LNAV/VNAV NA below -8°C or above 54°C. For inop ALS, increase LNAV/VNAV all Cats visibility to RVR 4500 and LNAV Cats C and D visibility to 1 3/4 SM.		

D-ATIS <b>120.15</b>	LONE STAR APP CON <b>124.3 282.275 (N)</b> <b>125.2 343.65 (S)</b>	LOVE TOWER <b>123.7 239.3</b>	GND CON <b>121.75 348.6</b>
-------------------------	--	----------------------------------	--------------------------------



ELEV <b>487</b>	<b>D</b>	TDZE <b>485</b>
-----------------	----------	-----------------



	WENOP	APAKE	ISNAW	JUDNO	CAMSO	FAVKU	DUMPY
	3000	2400	2000	1800	1600	tr 116°	
	← 4.2 NM		← 2 NM		← 1.2 NM		← 1.6 NM
	← 1.8 NM						← 1.8 NM
	GP 3.00° TCH 55				1.8 NM to RWY13L		
CATEGORY	A		B		C		D
LPV DA			685/18		200 (200-1/2)		
LNAV/VNAV DA			760/24		275 (300-1/2)		
LNAV MDA	1100/24		615 (700-1/2)		1100-1 3/8 615 (700-1 3/8)		
CIRCLING	1100-1 613 (700-1)		1140-1 653 (700-1)		1280-2 1/4 793 (800-2 1/4)		1520-3 1033 (1100-3)

SC-2, 11 JUN 2026 to 09 JUL 2026

SC-2, 11 JUN 2026 to 09 JUL 2026