

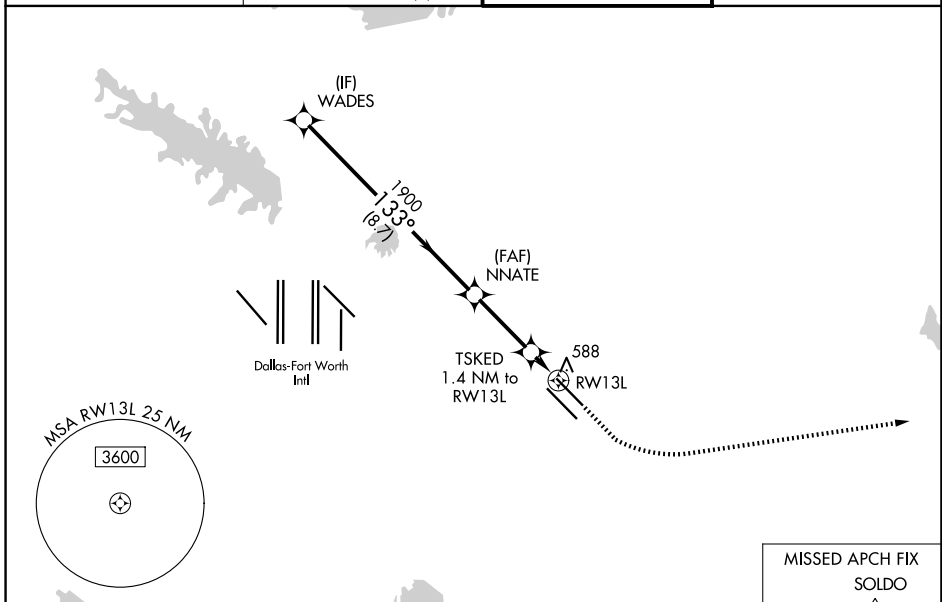
WAAS CH 99723 W13B	APP CRS 133°	Rwy Ldg 7352 TDZE 485 Apt Elev 487
--	------------------------	---

RNAV (GPS) Z RWY 13L

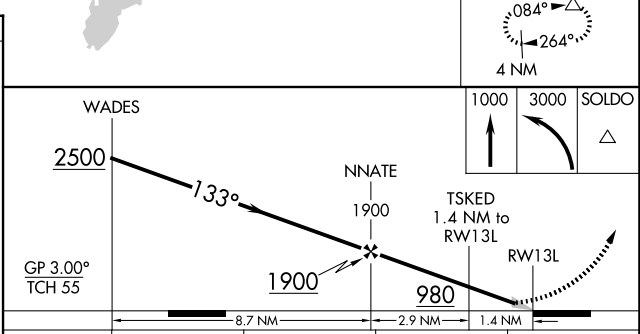
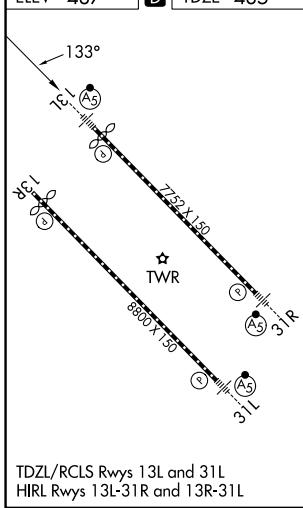
DALLAS LOVE FLD (DAL)

RNP APCH - GPS.	MALSRS 	MISSED APPROACH: Climb to 1000 then climbing left turn to 3000 direct SOLDO and hold.
<p>⚠ LNAV procedure NA during simultaneous operations. Simultaneous approach authorized. Use of FD or AP required during simultaneous operations. For uncompensated Baro-VNAV systems, Baro-VNAV NA below -1.5°C or above 54°C. For inop ALS, increase LNAV/VNAV all Cats visibility to RVR 4500 and LNAV Cats C/D visibility to RVR 5500.</p>		

D-ATIS 120.15	LONE STAR APP CON 124.3 282.275 (N) 125.2 343.65 (S)	LOVE TOWER 123.7 239.3	GND CON 121.75 348.6
-------------------------	--	----------------------------------	--------------------------------



ELEV 487	D	TDZE 485
----------	----------	----------



	WADES 2500	NNATE 1900	TSKED 980	RWY 13L
	GP 3.00° TCH 55	1900	980	
	8.7 NM	2.9 NM	1.4 NM	
CATEGORY	A	B	C	D
LPV DA	685/18		200 (200-½)	
LNAV/VNAV DA	764/24		279 (300-½)	
LNAV MDA	840/24	355 (400-½)	840/30	355 (400-¾)
CIRCLING	1000-1 513 (600-1)	1140-1 653 (700-1)	1280-2¼ 793 (800-2¼)	1520-3 1033 (1100-3)

SC-2, 11 JUN 2026 to 09 JUL 2026

SC-2, 11 JUN 2026 to 09 JUL 2026