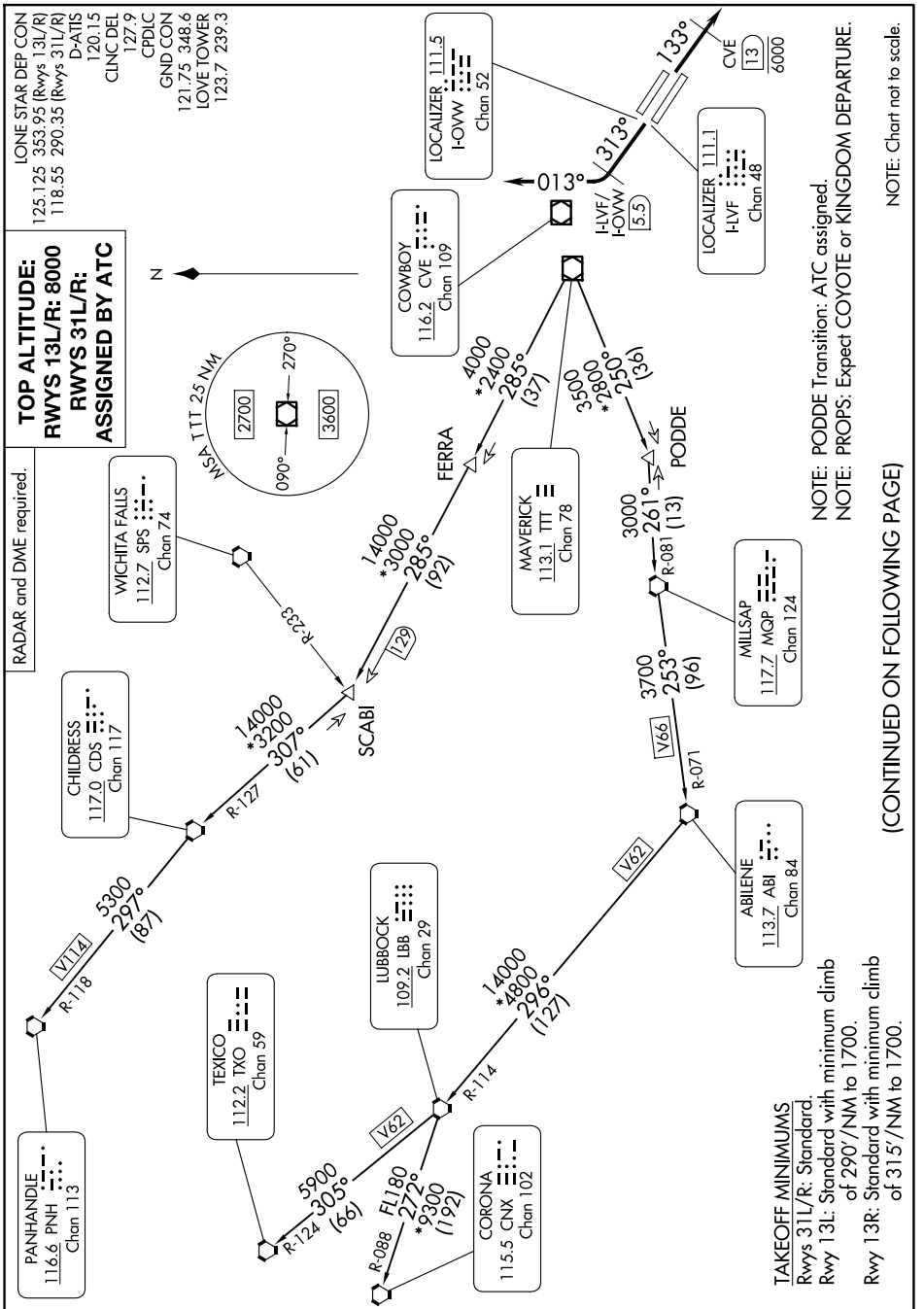


WORTH ONE DEPARTURE



9202 JUN 60 to 09 JUL 2020 11 2-C-2

WORTH ONE DEPARTURE

(CONTINUED ON FOLLOWING PAGE)

SC-2, 11 JUN 2026 to 09 JUL 2026

NOTE: Chart not to scale.

NOTE: PODDE Transition: ATC assigned.
NOTE: PROPS: Expect COYOTE or KINGDOM DEPARTURE.

TOP ALTITUDE:
RWYS 13L/R: 8000
RWYS 31L/R:
ASSIGNED BY ATC

RADAR and DME required.

IONE STAR DEP CON
125.125 353.95 (Rwys 13L/R)
118.55 290.35 (Rwys 31L/R)
D-ATIS
120.15
CLNC DEL
127.9
CPDIC
GND CON
121.75 348.6
LOVE TOWER
123.7 239.3

CHILDRESS
117.0 CDS
Chan 117

WICHITA FALLS
112.7 SFS
Chan 74

TEXICO
112.2 TXO
Chan 59

LUBBOCK
109.2 LBB
Chan 29

CORONA
115.5 CNX
Chan 102

ABILENE
113.7 ABI
Chan 84

MILLSAP
117.7 MGP
Chan 124

MAVERICK
113.1 TTT
Chan 78

COWBOY
116.2 CVE
Chan 109

LOCALIZER 111.5
I-OWW
Chan 52

LOCALIZER 111.1
I-LVF
Chan 48

CVE
113
6000

TAKEOFF MINIMUMS
Rwys 31L/R: Standard.
Rwy 13L: Standard with minimum climb
of 290'/NM to 1700.
Rwy 13R: Standard with minimum climb
of 315'/NM to 1700.