

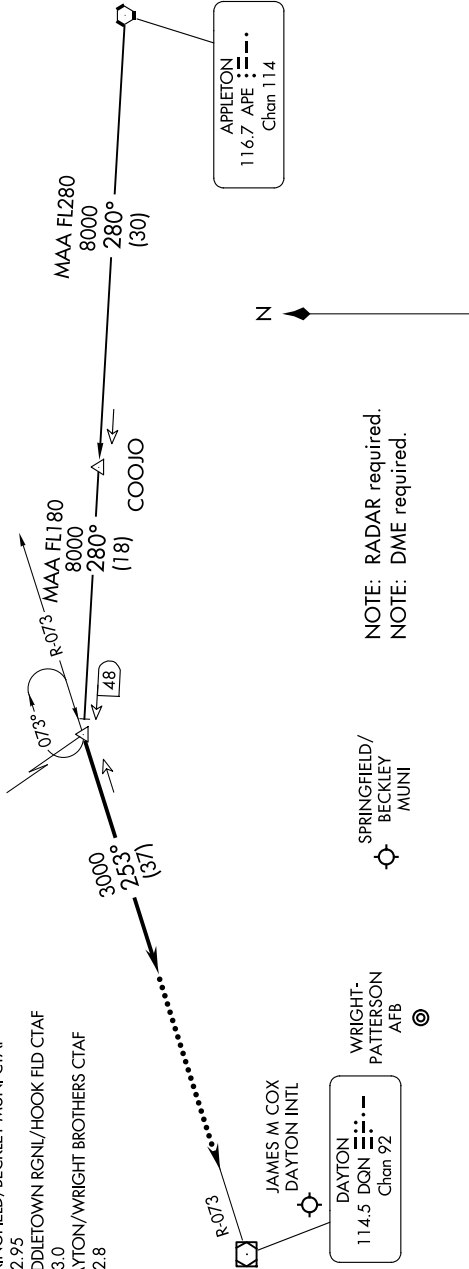
# DANEI THREE ARRIVAL

EC-2, 11 JUN 2026 to 09 JUL 2026

COLUMBUS APP CON  
134.45 323.15  
DAY ATIS  
125.8  
KFFO ATIS  
124.475 269.9  
SPRINGFIELD/BECKLEY MUNI CTAF  
122.95  
MIDDLETOWN RGNL/HOOK FLD CTAF  
123.0  
DAYTON/WRIGHT BROTHERS CTAF  
122.8

### DANEI VERTICAL NAVIGATION PLANNING

Expect 11000 250K



NOTE: RADAR required.  
NOTE: DME required.

SPRINGFIELD/  
BECKLEY  
MUNI

WRIGHT-  
PATTERSON  
AFB

DAYTON/  
WRIGHT BROTHERS

MIDDLETOWN RGNL/  
HOOK FLD

APPLETON TRANSITION (APE.DANEI3): From over APE VORTAC on APE R-280 to DANEI. Thence....

....From over DANEI on heading 253°. Expect RADAR vectors to final approach course.

### LOST COMMUNICATIONS:

In the event of lost communications: At DANEI, proceed direct DQN VOR/DME maintain 3000' until DQN VOR/DME.

NOTE: Chart not to scale.

EC-2, 11 JUN 2026 to 09 JUL 2026

# DANEI THREE ARRIVAL