

LOC I-DAY 108.3	APP CRS 185°	Rwy Ldg TDZE Apt Elev	8502 996 1009
---------------------------	------------------------	-----------------------------	--

ILS or LOC RWY 18

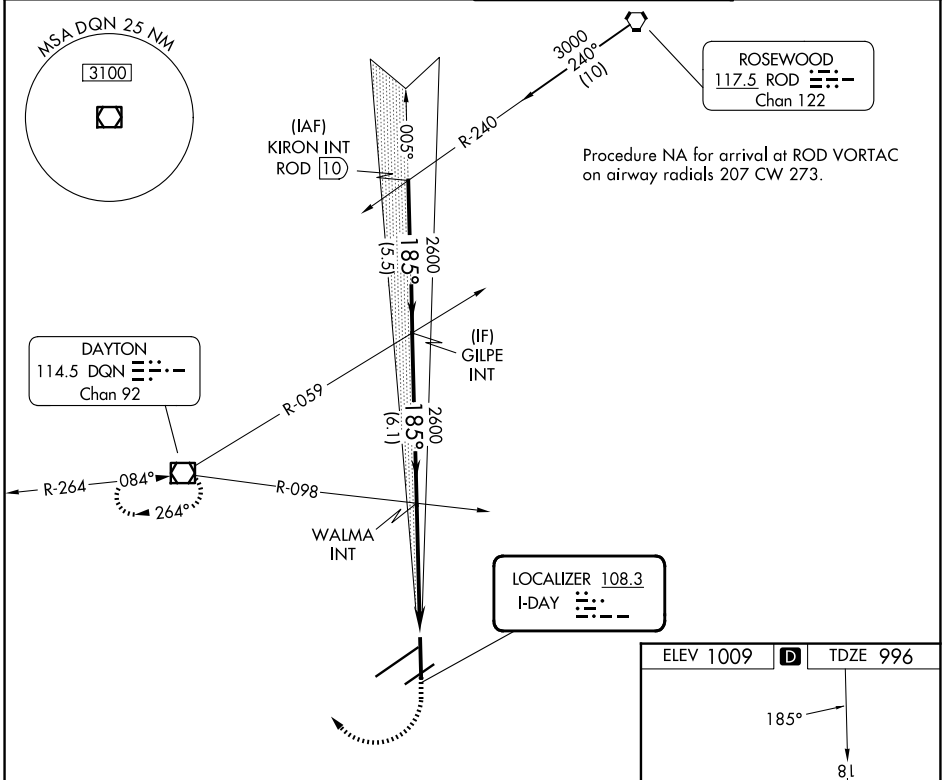
JAMES M COX DAYTON INTL (DAY)

▼ For inop ALS, increase S-LOC 18 Cat C/D visibility to RVR 6000.
 ** RVR 1800 authorized with use of FD or AP or HUD to DA.

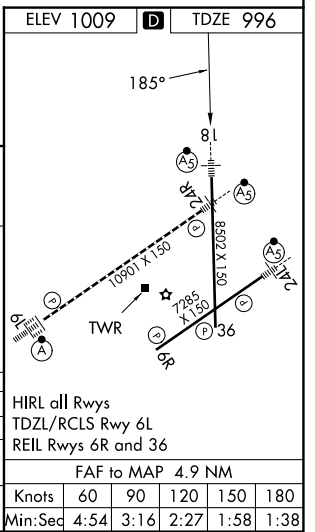
MALSR

MISSED APPROACH: Climb to 1400 then climbing right turn to 3100 direct DQN VOR/DME and hold.

ATIS 125.8	COLUMBUS APP CON 118.85 305.2 (091°-180°) 134.45 323.15 (181°-090°)	DAYTON TOWER 119.9 257.7	GND CON 121.9
----------------------	---	------------------------------------	-------------------------



	KIRON INT ROD 10	GILPE INT	WALMA INT	DQN
	3000	2600	2600	
GS 3.00° TCH 55	5.5 NM	6.1 NM	4.9 NM	
CATEGORY	A	B	C	D
S-ILS 18 **	1196/24 200 (200-½)			
S-LOC 18	1400/24	404 (400-½)	1400/40	404 (400-¾)
CIRCLING	1580-1	571 (600-1)	1580-1½ 571 (600-1½)	1640-2 631 (700-2)



HIRL all Rwys
 TDZL/RCLS Rwy 6L
 REIL Rwys 6R and 36

FAF to MAP 4.9 NM

Knots	60	90	120	150	180
Min:Sec	4:54	3:16	2:27	1:58	1:38

EC-2, 11 JUN 2026 to 09 JUL 2026

EC-2, 11 JUN 2026 to 09 JUL 2026