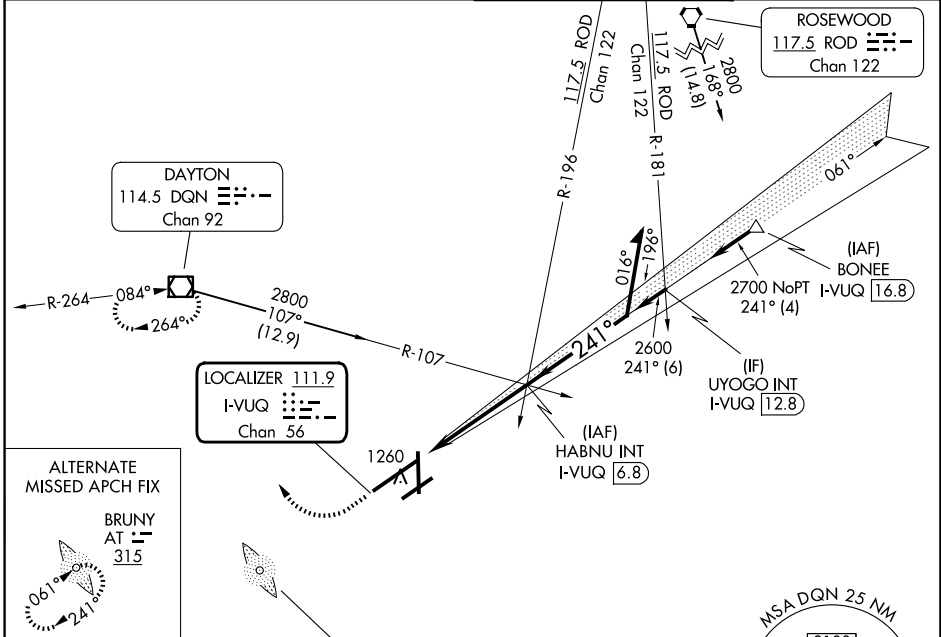


LOC/DME I-VUQ 111.9 Chan 56	APP CRS 241°	Rwy Ldg 10900 TDZE 997 Apt Elev 1009
------------------------------------------	------------------------	-----------------------------------------------------------------

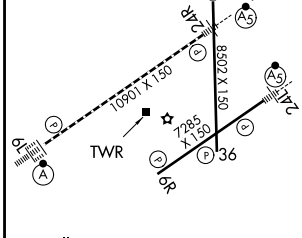
ILS or LOC RWY 24R

JAMES M COX DAYTON INTL (DAY)

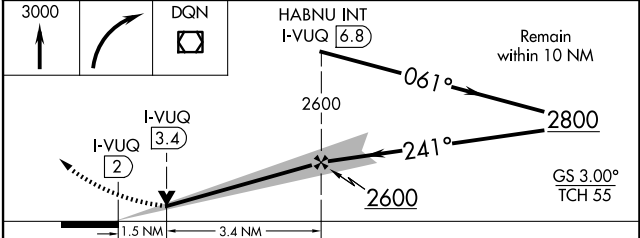
ADF required for alternate missed approach.		MALSR 	MISSED APPROACH: Climb to 3000 then right turn direct DQN VOR/DME and hold.
⚠ Simultaneous approach authorized. For inop ALS, increase S-LOC 24R Cat A/B visibility to 1 SM; increase Cat C/D visibility to 1½ SM.			
ATIS 125.8	COLUMBUS APP CON 118.85 305.2 (091°-180°) 134.45 323.15 (181°-090°)	DAYTON TOWER 119.9 257.7	GND CON 121.9



ELEV 1009	D	TDZE 997
-----------	----------	----------



Knots	60	90	120	150	180
Min:Sec	4:54	3:16	2:27	1:58	1:38



CATEGORY	A	B	C	D
S-ILS 24R	1203/24		206 (200-½)	
S-LOC 24R	1520/24	523 (600-½)	1520/55	523 (600-1)
CIRCLING	1580-1	571 (600-1)	1580-1½ 571 (600-1½)	1640-2 631 (700-2)

EC-2, 11 JUN 2026 to 09 JUL 2026

EC-2, 11 JUN 2026 to 09 JUL 2026