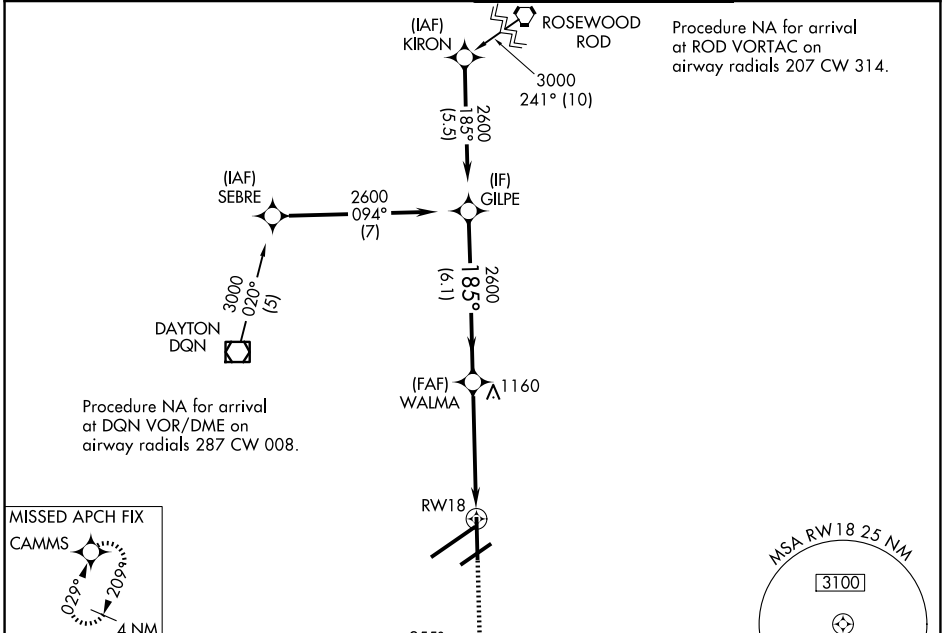


WAAS CH 86914 W18A	APP CRS 185°	Rwy Ldg TDZE Apt Elev	8502 996 1009
--	------------------------	-----------------------------	--

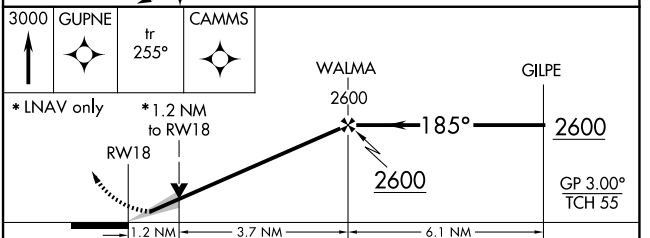
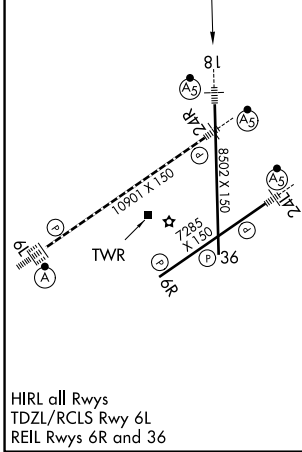
RNAV (GPS) RWY 18

JAMES M COX DAYTON INTL (DAY)

RNP APCH.		MALSRS	MISSED APPROACH: Climb to 3000 direct GUPNE and track 255° to CAMMS and hold.
<p>▼ For uncompensated Baro-VNAV systems, LNAV/VNAV NA below -20°C or above 54°C. For inop ALS, increase LNAV/VNAV all Cals visibility to RVR 4500. ** RVR 1800 authorized with use of FD or AP or HUD to DA.</p>			
ATIS 125.8	COLUMBUS APP CON 118.85 305.2 (091°-180°) 134.45 323.15 (181°-090°)	DAYTON TOWER 119.9 257.7	GND CON 121.9



ELEV 1009	D	TDZE 996
-----------	----------	----------



CATEGORY	A	B	C	D
LPV DA **		1196/24	200 (200-½)	
LNAV/VNAV DA		1274/24	278 (300-½)	
LNAV MDA	1420/24	424 (500-½)	1420/40	424 (500-¾)
CIRCLING	1580-1	571 (600-1)	1580-1½ 571 (600-1½)	1640-2 631 (700-2)

EC-2, 11 JUN 2026 to 09 JUL 2026

EC-2, 11 JUN 2026 to 09 JUL 2026