

WAAS CH 90414 W06B	APP CRS 061°	Rwy Ldg TDZE Apt Elev	7001 1009 1009
--	------------------------	-----------------------------	---

RNAV (GPS) RWY 6R

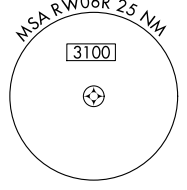
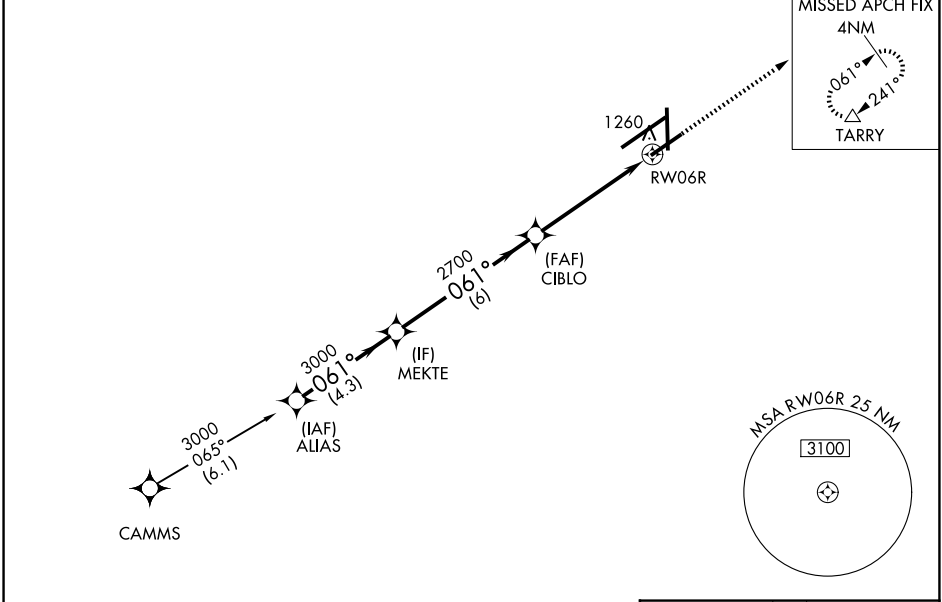
JAMES M COX DAYTON INTL (DAY)

RNP APCH - GPS.

▼ For uncompensated Baro-VNAV systems, LNAV/VNAV NA below -15°C or above 54°C. Rwy 6R helicopter visibility reduction below ¾ SM NA. Simultaneous approach authorized. LNAV procedure NA during simultaneous operations. Use of FD or AP required during simultaneous operations.

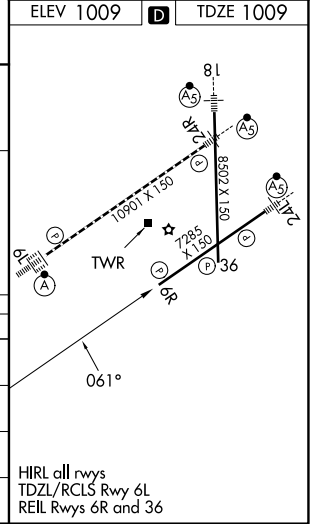
MISSED APPROACH: Climb to 3000 direct TARRY and hold.

ATIS 125.8	COLUMBUS APP CON 118.85 305.2 (091°-180°) 134.45 323.15 (181°-090°)	DAYTON TOWER 119.9 257.7	GND CON 121.9
----------------------	---	------------------------------------	-------------------------



VGSI and RNAV glidepath not coincident (VGSI Angle 3.00/TCH 50).

	ALIAS	MEKTE	CIBLO	RW06R
Altitude	3000	3000	2700	1260
Distance	4.3 NM	6 NM	3.6 NM	1.5 NM
GP	GP 3.00° TCH 53			
CATEGORY	A	B	C	D
LPV DA		1260-¾	251 (300-¾)	
LNAV/ VNAV DA		1496-1¾	487 (500-1¾)	
LNAV MDA	1520-1	511 (600-1)	1520-1½ 511 (600-1½)	1520-1¾ 511 (600-1¾)
CIRCLING	1580-1	571 (600-1)	1580-1½ 571 (600-1½)	1640-2 631 (700-2)



EC-2, 11 JUN 2026 to 09 JUL 2026

EC-2, 11 JUN 2026 to 09 JUL 2026