

ILS or LOC RWY 23R

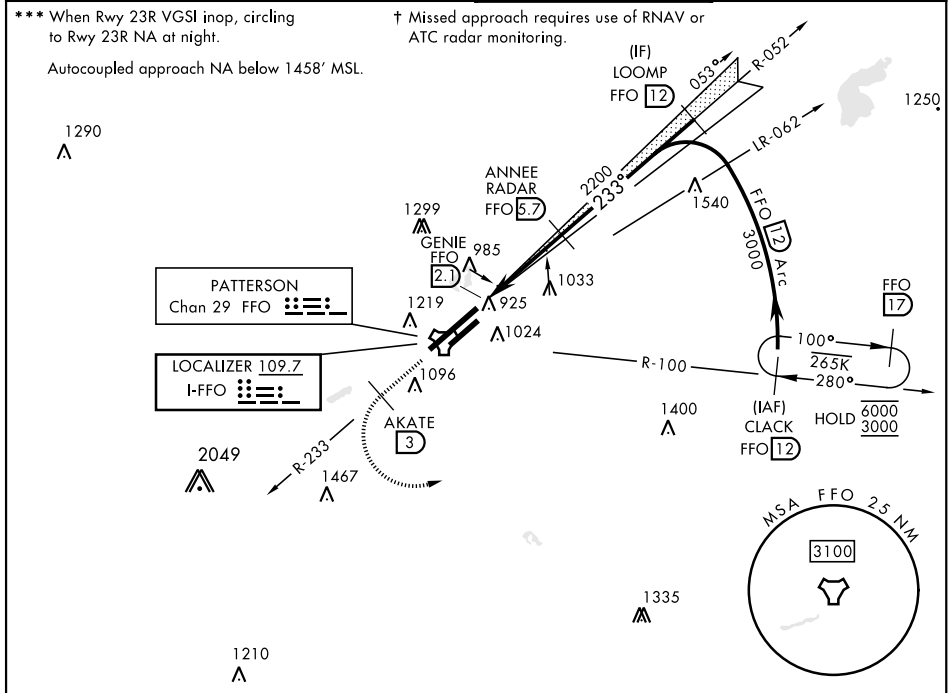
LOC I-FFO 109.7	APCH CRS 233°	Rwy Idg 12,600
		THRE 823
		Arprt Elev 823

[USAF]

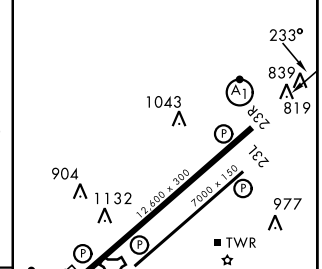
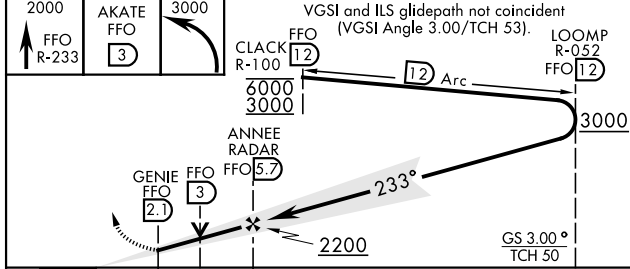
WRIGHT-PATTERSON AFB (KFFO)

DME or RADAR required for Localizer.	ALSF-1 	† MISSED APPROACH: Climb via FFO R-233 to 2000, at 3 DME turn left direct CLACK to 3000 and hold.
<p>▼ *When ALS inop, increase RVR to 40 and vis to ¼ mile.</p> <p>**When ALS inop, increase CAT AB RVR to 55 and vis to 1 mile, CAT CDE vis to 1⅓ miles.</p>		

ATIS 124.475 269.9	COLUMBUS APP CON 118.85 269.275	PATTERSON TOWER 127.8 281.45	GND CON 121.8 335.8
------------------------------	---	--	-------------------------------



EMERG SAFE ALT 100 NM 3700	ELEV 823	THRE 823
----------------------------	----------	----------



CATEGORY	A	B	C	D	E
S-ILS 23R*	1023/24		200	(200-½)	
S-LOC 23R**	1320/24	497 (500-½)	1620/50		497 (500-1)
CIRCLING***	1380-1	1440-1	1560-2	1620-2½	1620-2¾
	557 (600-1)	617 (600-1)	737 (800-2)	797 (800-2½)	797 (800-2¾)

HIRL Rwy 5L-23R
MIRL Rwy 5R-23L

ILS or LOC RWY 23R

EC-2, 11 JUN 2026 to 09 JUL 2026

EC-2, 11 JUN 2026 to 09 JUL 2026