

DAYTON, OHIO

# RNAV (GPS) RWY 23R

26078

APCH CRS	Rwy Idg	12,600
233°	TDZE	823
	Arpt Elev	823

(USAF)

WRIGHT PATTERSON AFB (KFFO)

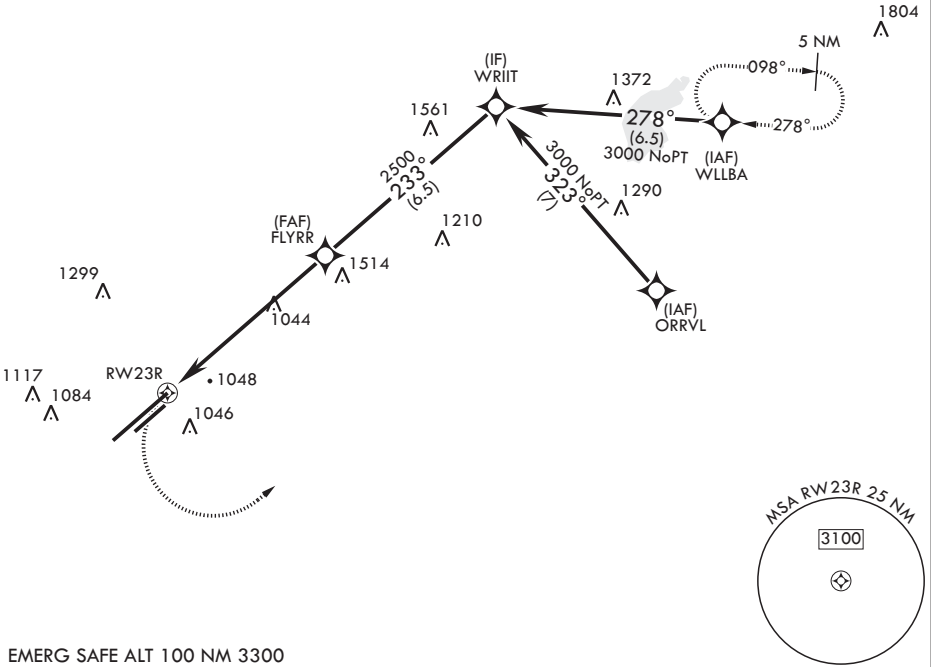
**⚠** \* When ALS inop, increase CAT AB RVR to 55, vis to 1 mile; CAT CD vis to 1 3/8 miles.  
 \*\* When Rwy 23R VGSI inop, circling to Rwy 23R NA at night.



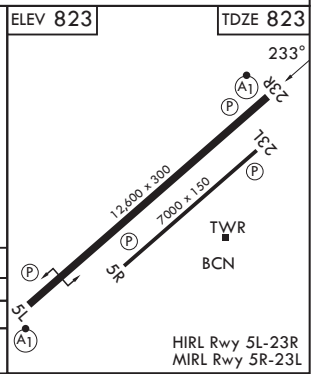
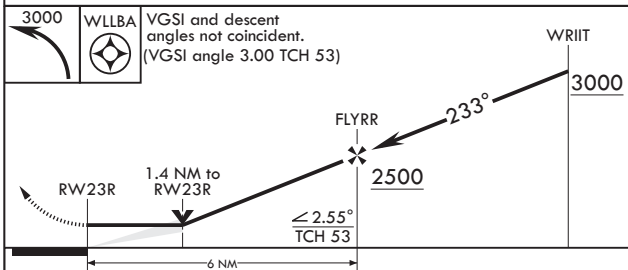
MISSED APPROACH: Turn left climb to 3000 direct WLLBA waypoint and hold.

ATIS 124.475 269.9	COLUMBUS APP CON/DEP CON 118.85 269.275	PATTERSON TOWER 127.8 281.45	GND CON 121.8 335.8
-----------------------	--	---------------------------------	------------------------

DME/DME RNP-0.3 NA



EMERG SAFE ALT 100 NM 3300



CATEGORY	A	B	C	D
LNAV MDA*	1320/24	497 (500-1/2)	1320/50	497 (500-1)
CIRCLING**	1380-1 557 (600-1)	1440-1 617 (700-1)	1560-2 737 (800-2)	1620-2 1/2 797 (800-2 1/2)

HIRL Rwy 5L-23R  
MIRL Rwy 5R-23L

DAYTON, OHIO

39°50'N - 84°03'W

WRIGHT PATTERSON AFB (KFFO)

Amdt 5 13OCT16

# RNAV (GPS) RWY 23R

EC-2, 11 JUN 2026 to 09 JUL 2026

EC-2, 11 JUN 2026 to 09 JUL 2026