

RNAV (GPS) RWY 5L

APCH CRS	Rwy Idg	12,600
053°	TDZE	803
	Arprt Elev	823

(USAF)

WRIGHT PATTERSON AFB (KFFO)

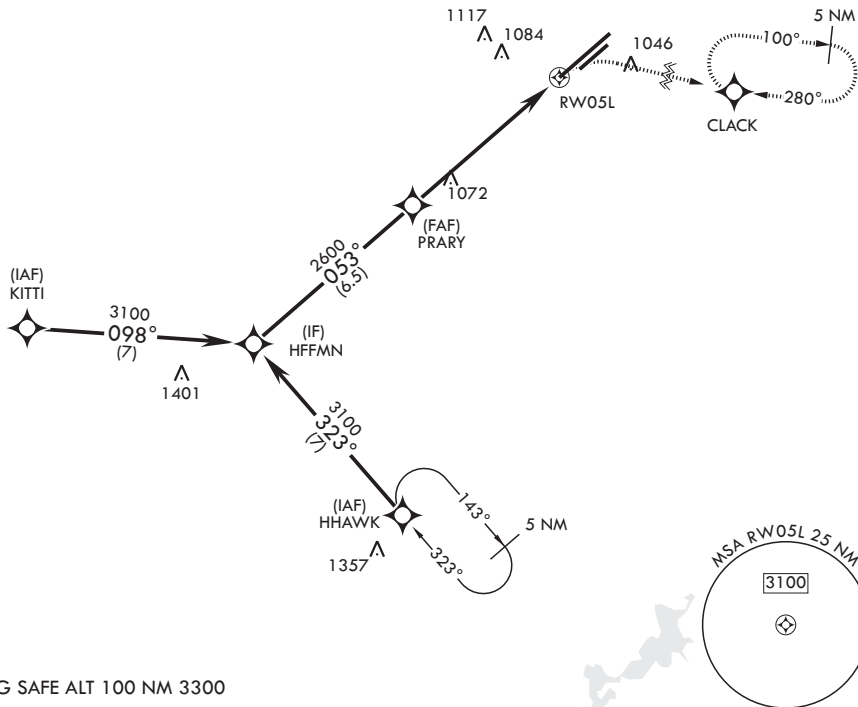
ALSF-1 MISSED APPROACH: Turn right climb to 3100 direct CLACK WPT and hold.

* When ALS inop increase CAT AB RVR to 55, vis to 1 mile; CAT CD vis to 1 5/8 miles.
 ** When Rwy 23R VGSI inop, circling to Rwy 23R NA at night.

ATIS 124.475 269.9	COLUMBUS APP CON/DEP CON 118.85 269.275	PATTERSON TOWER 127.8 281.45	GND CON 121.8 335.8
-----------------------	--	---------------------------------	------------------------

DME/DME RNP-0.3 NA

1299 Δ



EMERG SAFE ALT 100 NM 3300

HFFMN	3100	053°	PRARY	2600	1.6 NM to RW05L	RW05L	3100	CLACK	ELEV 823	TDZE 803
VGSI and descent angles not coincident (VGSI angle 3.00/TCH 51).										
CATEGORY	A	B	C	D						
LNAV MDA*	1380/24	577 (600-1/2)	1380-1 1/4	577 (600-1 1/4)						
CIRCLING**	1380-1 557 (600-1)	1440-1 617 (700-1)	1560-2 737 (800-2)	1620-2 1/2 797 (800-2 1/2)	HIRL Rwy 5L-23R MIRL Rwy 5R-23L					

RNAV (GPS) RWY 5L

EC-2, 11 JUN 2026 to 09 JUL 2026

EC-2, 11 JUN 2026 to 09 JUL 2026