

DAYTON, OHIO

# TACAN RWY 5R

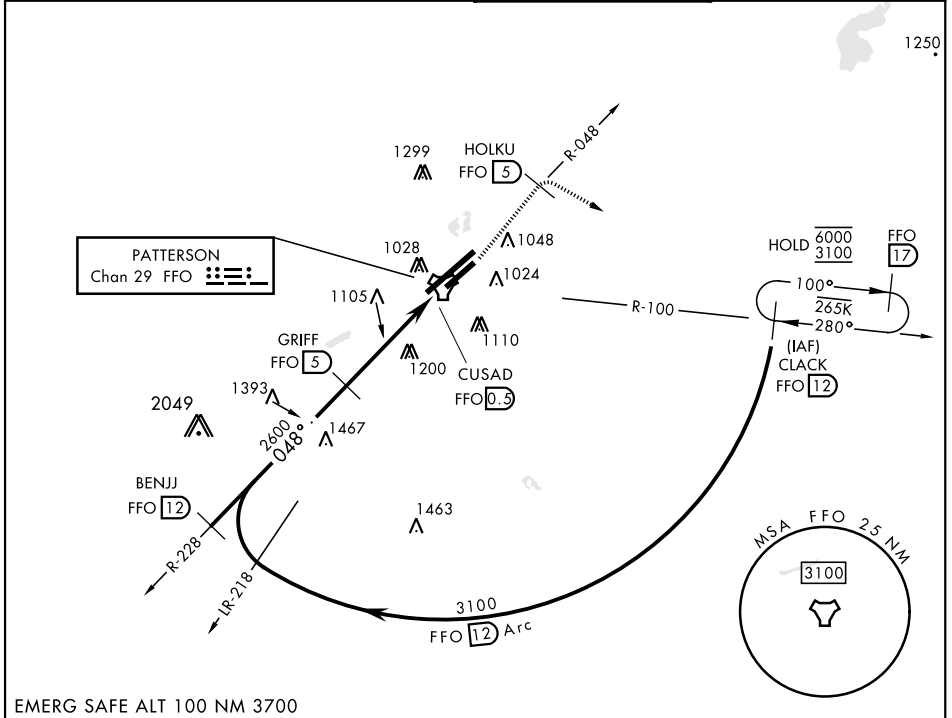
WRIGHT-PATTERSON AFB (KFFO)

TACAN FFO Chan <b>29</b>	APCH CRS <b>048°</b>	Rwy Ldg THRE Arprt Elev <b>7000</b> <b>807</b> <b>823</b>
-----------------------------	-------------------------	--

[USAF]

▼ \* When Rwy 23R VGSi inop, circling to Rwy 23R NA at night.
 MISSED APPROACH: Climb to 2000 via FFO R-048 to HOLKU, turn right direct CLACK climbing to 3100 and hold.

ATIS <b>124.475 269.9</b>	COLUMBUS APP CON <b>118.85 269.275</b>	PATTERSON TOWER <b>127.8 281.45</b>	GND CON <b>121.8 335.8</b>
------------------------------	---	--	-------------------------------



EC-2, 11 JUN 2026 to 09 JUL 2026

EC-2, 11 JUN 2026 to 09 JUL 2026

EMERG SAFE ALT 100 NM 3700

	2000 ↑ FFO R-048	HOLKU FFO 5	3100 ↻	CLACK FFO 12	ELEV 823	THRE 807
CATEGORY	A	B	C	D	E	
S-5R	1500-1	687 (700-1)	1500-2	687 (700-2)		
CIRCLING*	1500-1	677 (700-1)	1560-2 737 (800-2)	1620-2½ 797 (800-2½)	1620-2¾ 797 (800-2¾)	HIRL Rwy 5L-23R MIRL Rwy 5R-23L

DAYTON, OHIO  
Amdt 5 05JAN17

39° 50'N-84° 03'W

WRIGHT-PATTERSON AFB (KFFO)

# TACAN RWY 5R