

APP CRS 355°	Rwy Idg 5494
	TDZE 197
	Apt Elev 202

RNAV (GPS) RWY 36

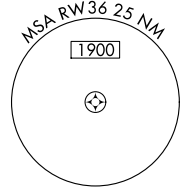
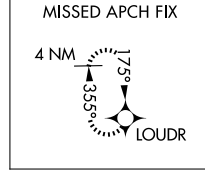
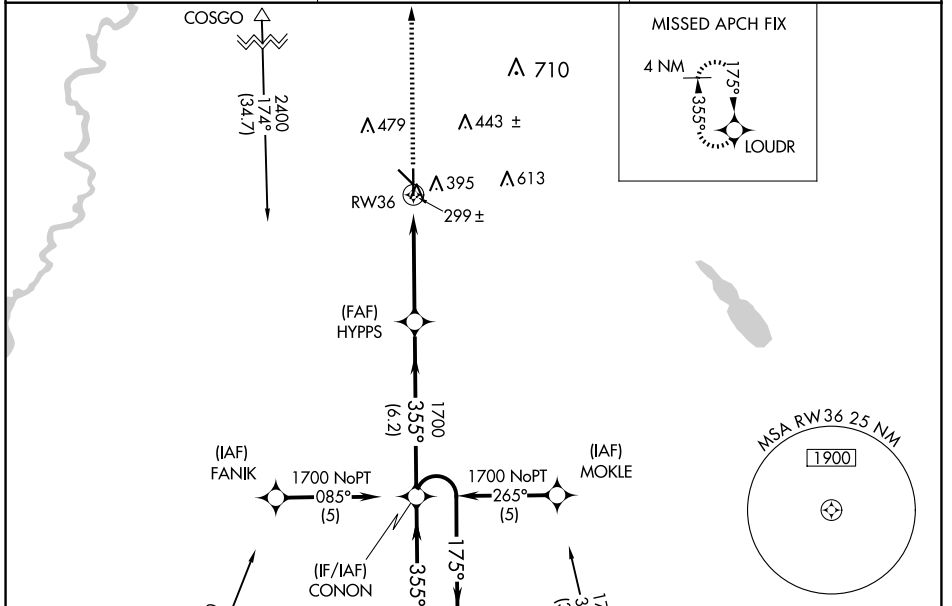
BEAUREGARD RGNL (DRI)

⚠ Inoperative table does not apply. For uncompensated Baro-VNAV systems, LNAV/VNAV NA below -15°C (5°F) or above 48°C (118°F). DME/DME RNP-0.3 NA. Visibility reduction by helicopters NA. When local altimeter setting not received, use Fort Polk altimeter setting and increase LNAV/LNAV DA to 622 feet and visibility all Cats ¼ SM; increase all MDAs 60 feet and visibility LNAV Cats C/D and Circling Cats C/D ¼ SM.

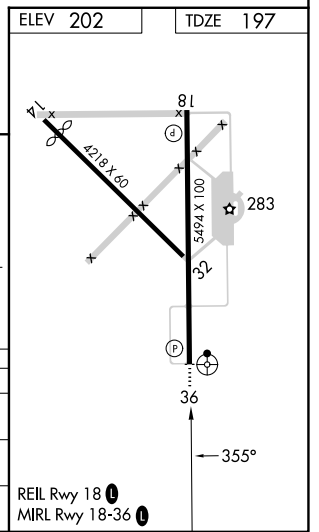
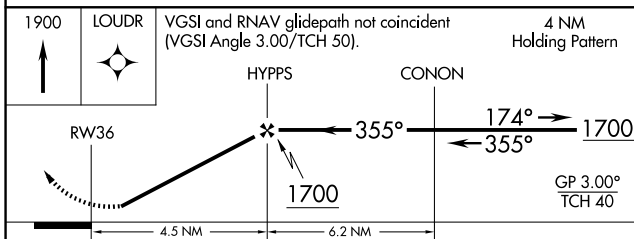


MISSED APPROACH:
Climb to 1900 direct LOUDR and hold.

AWOS-3PT 118.225	POLK APP CON 123.7 261.3	UNICOM 122.8 (CTAF) 0
----------------------------	------------------------------------	---------------------------------



ELEV 202	TDZE 197
----------	----------



CATEGORY	A	B	C	D
LNAV/VNAV DA	569-1¼		372 (400-1¼)	
LNAV MDA	660-1	463 (500-1)	660-1¼ 463 (500-1¼)	660-1½ 463 (500-1½)
CIRCLING	720-1	518 (600-1)	780-1½ 578 (600-1½)	1000-2½ 798 (800-2½)

REIL Rwy 18 0
MIRL Rwy 18-36 0

SC-4, 11 JUN 2026 to 09 JUL 2026

SC-4, 11 JUN 2026 to 09 JUL 2026